



KENSINGTON GARDENS SQUARE,

£895,000

Access to private gardens
Two double bedrooms
No onward chain
Share of freehold
Prime Bayswater
EPC - D

@marshandparsons
marshandparsons.co.uk

MARSH &
PARSONS



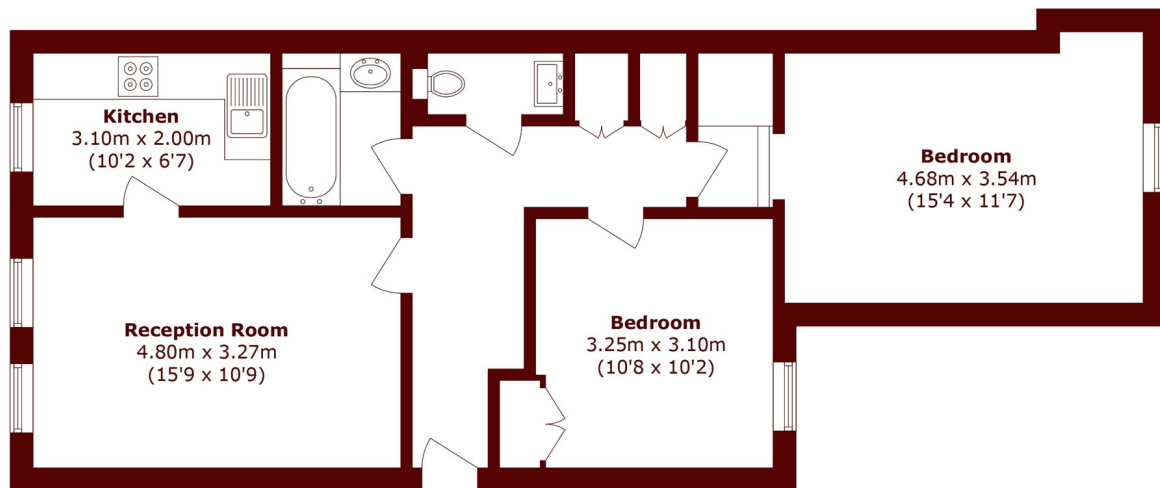
ABOUT THE PROPERTY

A lovely two bedroom third floor apartment with wonderful southerly views overlooking the greenery of private gardens in Prime Bayswater.

Kensington Gardens Square is wonderfully positioned just a short stroll from the fantastic array of fashionable shops, cafes, and restaurants on Westbourne Grove, whilst the green open spaces of Hyde Park are just moments away. There are excellent transport links close by with the Central and Circle lines accessible from the re-developed Queensway, whilst the Heathrow Express and Elizabeth line are within easy reach from Paddington Station.



STEP INSIDE KENSINGTON GARDENS SQUARE



Third Floor

Total area (approx.): 68.3 sq. m (735.1 sq. ft)

Notting Hill
020 7313 2890

Energy Rating: D We aim to make our particulars both accurate and reliable. However, they are not guaranteed; nor do they form part of an offer or contract. If you require clarification on any points then please contact us, especially if you're traveling some distance to view. Please note that appliances and heating systems have not been tested and therefore no warranties can be given as to their good working order

MARSH &
PARSONS