



Sidcup Road, SE12

£900,000

*** DEVELOPMENT OPPORTUNITY *** An exciting opportunity to acquire this corner plot house with development potential. With previous plans approved in 2016 for five apartments with parking. The property is currently a detached three bedroom family home with a large garden. Previous planning permission and plans available to view on the councils planning portal .

Lee and Kidbrooke train stations, Colfes school are all within walking distance. Blackheath Village with its variety of cafes, restaurants and boutique shops is within a mile radius approximately.

Features

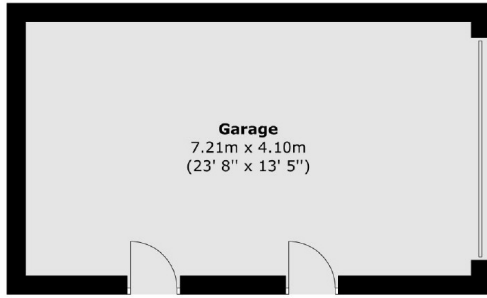
- Development Potential (STPP)
- Large Corner Plot
- Popular Location
- Detached Family Home
- Garage & Driveway
- No Upward Chain



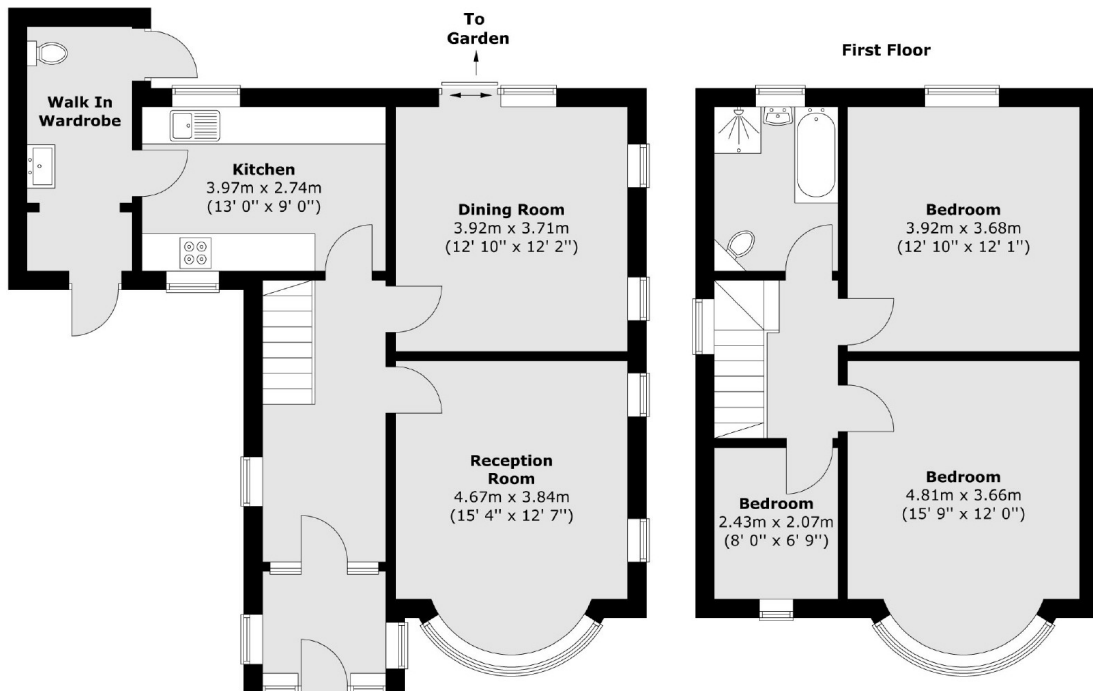
Sidcup Road, SE12



Sidcup Road, London, SE12



Ground Floor



Total area (approx.) : 112.6 sq. m (1212 sq. ft)
Total garage area (approx.) : 29.9 sq. m (322 sq. ft)