



homeworks
estate agent



54 Swaffham Road
Dereham, NR19 2DL

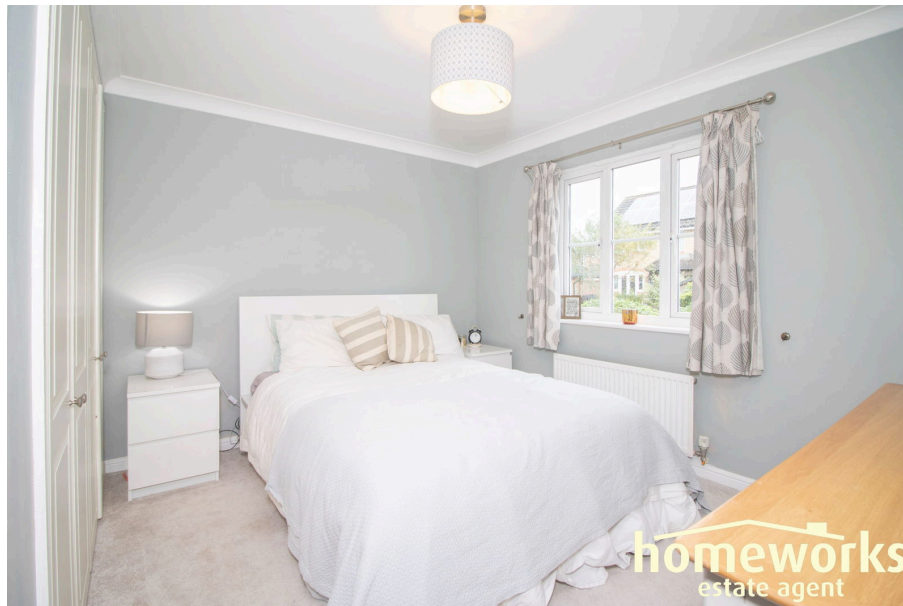
☎ (01362) 65 44 44
✉ sales@homeworks-uk.com
🌐 www.homeworks-uk.com

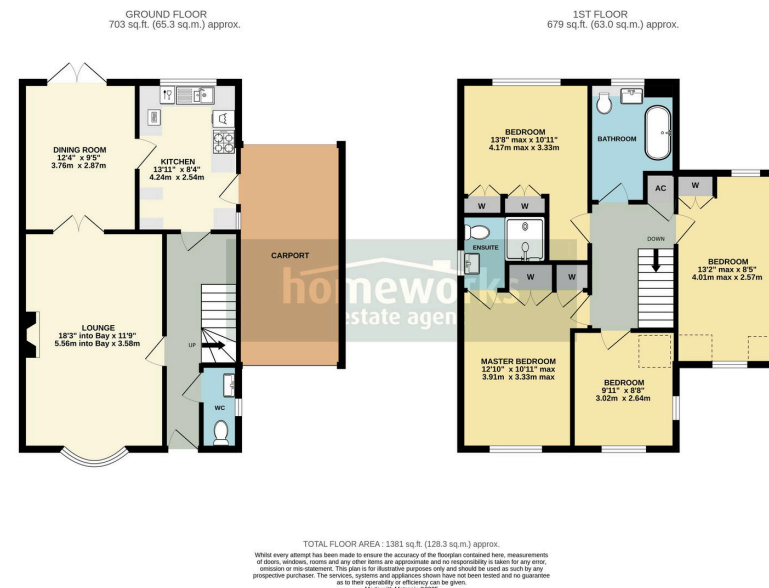
3 Mitchell Close,
Guide Price £300,000

🛏 4 🍽 2 🛋 2

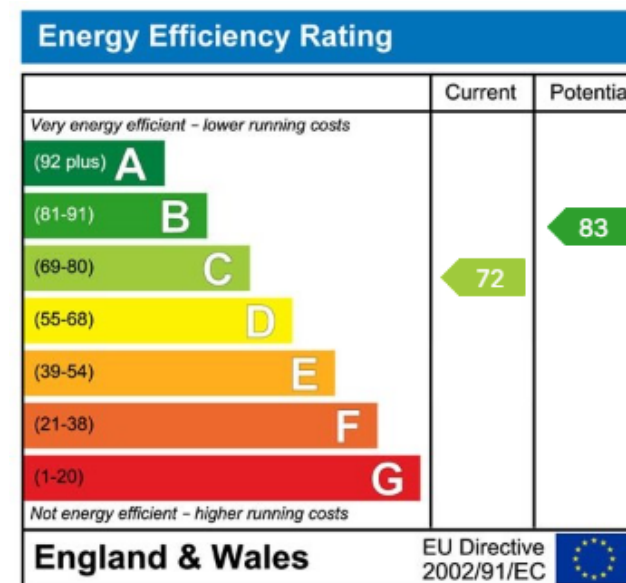


- ** SOLD PRIOR TO MARKETING **
- IMMACULATE DETACHED FAMILY HOME
- FOUR DOUBLE BEDROOMS
- 18'3 LOUNGE
- 12'4 DINING ROOM WITH PATIO DOORS TO GARDEN
- RE-FITTED KITCHEN
- 12'10 MASTER BEDROOM
- FAMILY BATHROOM, EN-SUITE TO MASTER & DOWNSTAIRS W/C
- ENCLOSED REAR GARDEN
- CARPORT & OFF ROAD PARKING





**** SOLD PRIOR TO MARKETING **** | IMMACULATE DETACHED FAMILY HOME | FOUR DOUBLE BEDROOMS | 18'3 LOUNGE | 12'4 DINING ROOM WITH PATIO DOORS TO GARDEN | RE-FITTED KITCHEN | 12'10 MASTER BEDROOM | FAMILY BATHROOM, EN-SUITE TO MASTER & DOWNSTAIRS W/C | ENCLOSED REAR GARDEN | CARPORT & OFF ROAD PARKING



C AMOS MNAEA Managing Director

VAT no. 185 328 683

zoopla

rightmove

Homeworks (Dereham) Ltd. Registration Number (08951563) incorporated in England. Registered Office: 45a Norwich Road, Dereham, Norfolk, England, NR20 3AS