



Heathfield Terrace, W4 £425,000

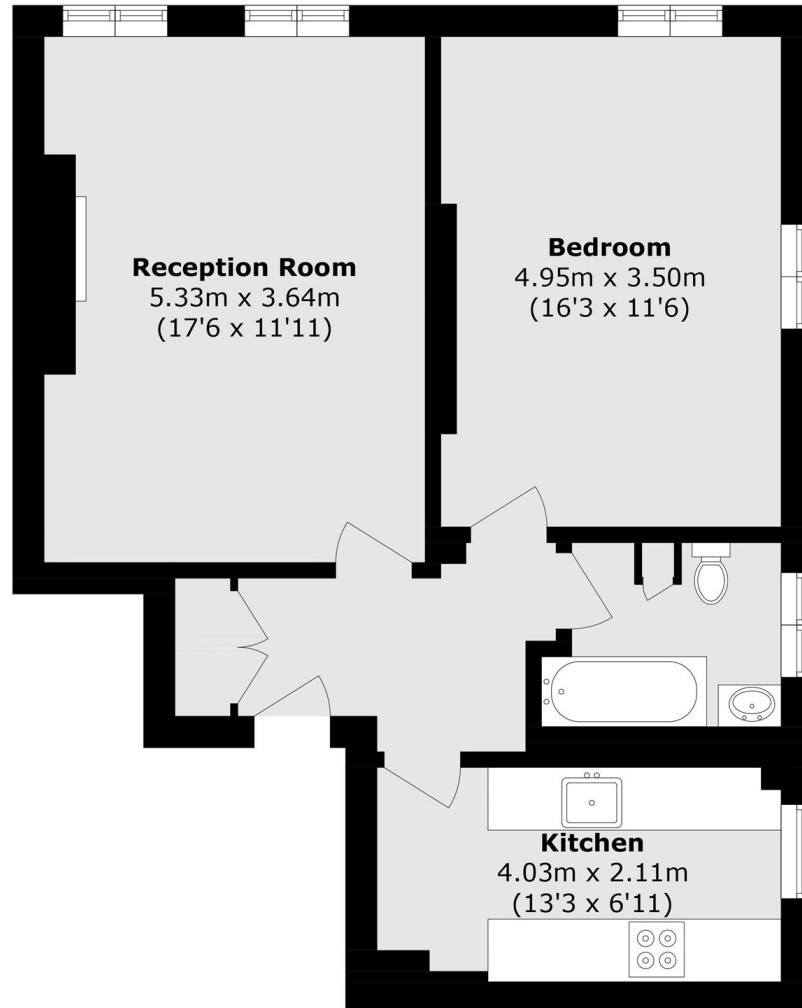
A bright top floor one-bedroom apartment with far-reaching views across Turnham Green and excellent natural light, offering a rare sense of openness and privacy. The property includes a spacious reception room, separate kitchen, generous double bedroom and a recently refurbished contemporary bathroom. Further benefits include a share of freehold, lift access, porter, well-maintained communal gardens, residents' parking and central heating and hot water included within the service charge.

Heathfield Court is in a prime location, only a short walk away from the array of High Street brands, restaurants, boutiques and supermarkets on Chiswick High Road, and has easy access to either Chiswick Park or Turnham Green stations.

Features

Top Floor With Views
Far Reaching Outlook
Share Of Freehold
Porter, Lift & Parking
Heating & Hot Water Incl.
No Onward Chain

Heathfield Terrace, London, W4



Total area (approx.): 55.1 sq. m (593.0 sq. ft)