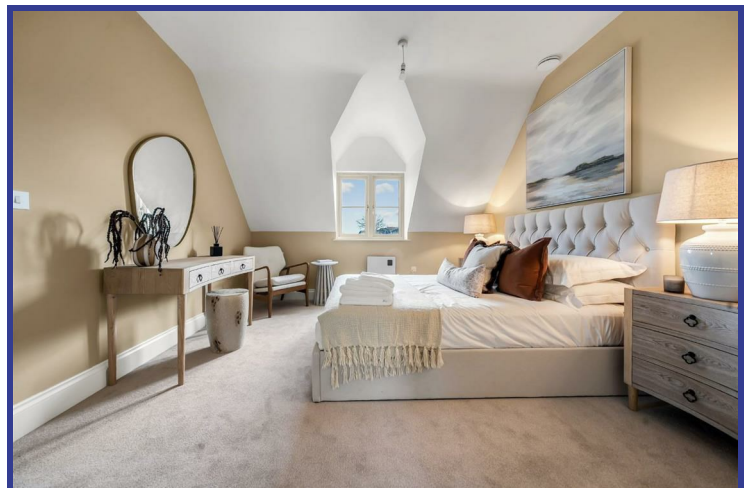




Wight Cottage Old Malthouse

Langton Matravers, BH19 3HA

Asking Price £575,000



WIGHT COTTAGE

Wight Cottage, situated on the prestigious new build development, the Old Malthouse in Langton Matravers is presented on the market for sale. The property is a stunning cottage offering an immaculate modern interior, blending contemporary and traditional design features seamlessly.


The property boasts approximately 1,335 sq ft of well-planned accommodation. Flexible open-style living accommodation to the first floor creates the perfect social space for a family to relax in or entertain guests, well-suited to the necessities of modern family life. A stylish modern fitted kitchen is beautifully presented and completes the living space, offering plenty of storage, floor and worktop space.

This home also benefits from three well-proportioned bedrooms and an allocated parking space. Viewings are highly advised to fully appreciate the space and style on offer.

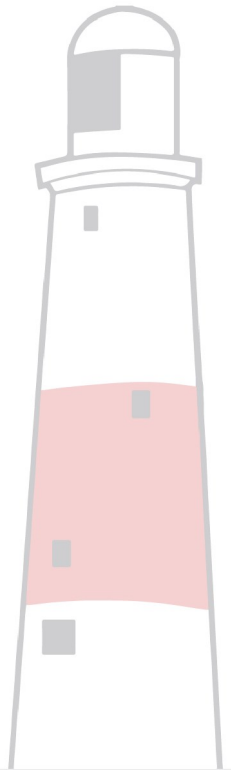
Area Map



Energy Efficiency Graph

Energy Efficiency Rating		
	Current	Potential
<i>Very energy efficient - lower running costs</i>		
(92 plus) A		
(81-91) B		
(69-80) C		
(55-68) D		
(39-54) E		
(21-38) F		
(1-20) G		
<i>Not energy efficient - higher running costs</i>		
England & Wales		EU Directive 2002/91/EC 

Floor Plans



These particulars, whilst believed to be accurate are set out as a general outline only for guidance and do not constitute any part of an offer or contract. Intending purchasers should not rely on them as statements of representation of fact, but must satisfy themselves by inspection or otherwise as to their accuracy. No person in this firm's employment has the authority to make or give any representation or warranty in respect of the property.

12 Easton Street, Portland, Dorset DT5 1BT