

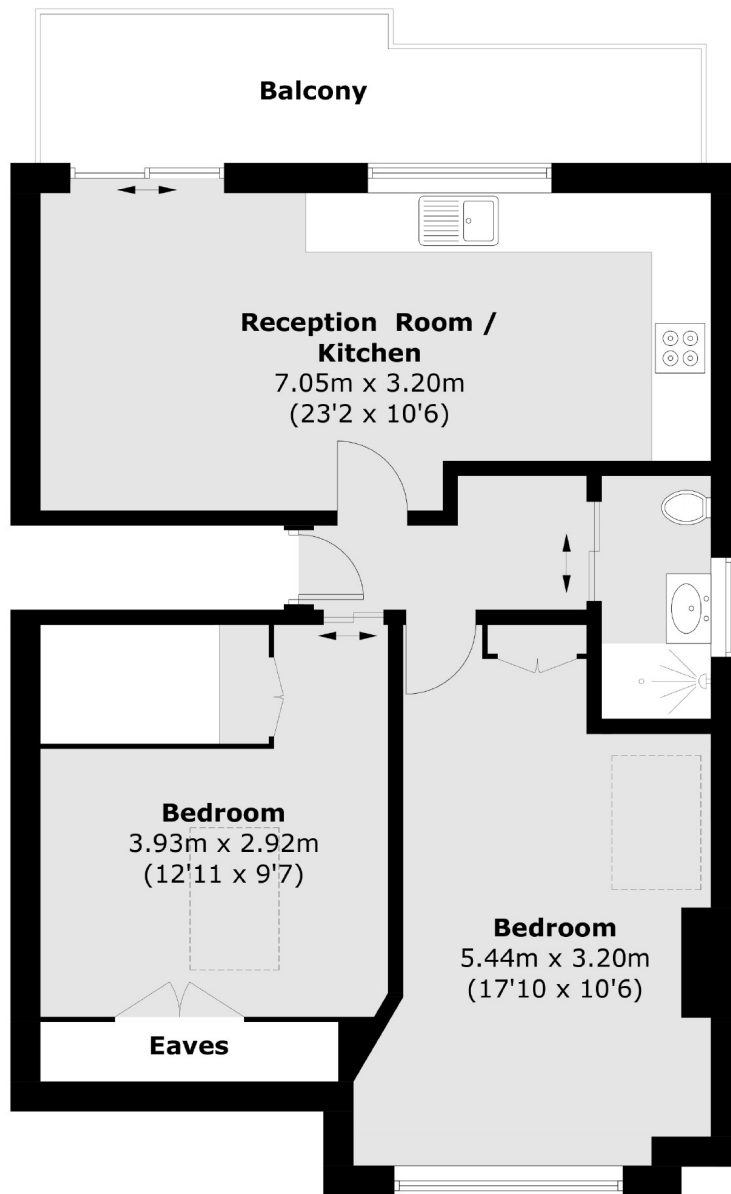


Craven Avenue, W5

£576 pw (£2,500 pcm)

A brand newly converted two bedroom apartment in a beautiful period conversion in central Ealing. The property has modern bathroom, open plan kitchen/dining and reception room and private balcony.

The property is located on Craven Avenue, close to Uxbridge Road and Ealing Broadway, offering excellent transport links and a wide range of local amenities.



Total area (approx.): 58.3 sq. m (627.5 sq. ft)
Balcony: 8.9 sq. m (95.7 sq. ft)

Robertson Smith & Kempson Ealing Lettings
1 The Broadway,
London, W5 2NT
020 8840 7885
ealinglettings@robertsonsmithandkempson.co.uk

Energy Rating: C. We aim to make our particulars both accurate and reliable. However they are not guaranteed; nor do they form part of an offer or contract. If you require clarification on any points then please contact us, especially if you're traveling some distance to view. Please note that appliances and heating systems have not been tested and therefore no warranties can be given as to their good working order.