



Iliffe Street, SE17

£499,950

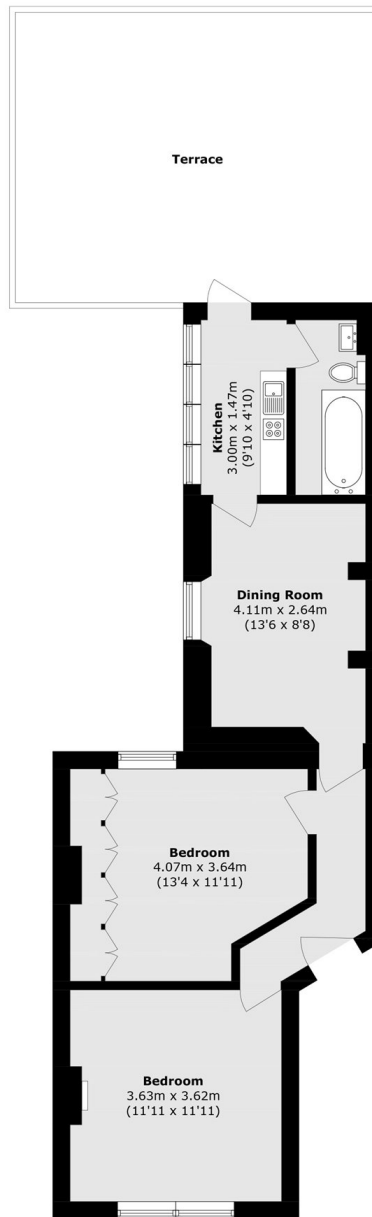
An exceptional one-bedroom period apartment occupying the second floor of an attractive building, presented in superb condition throughout. Rich in character and charm, the property features stripped wooden floors, impressive high ceilings, and a beautiful original working fireplace. This fabulous home further benefits from a generous private roof terrace, ideal for entertaining, with far-reaching views across London, as well as access to a communal rooftop terrace.

Peacefully located in the famous Pullen's Buildings within a short walk of both Kennington (Northern) and Elephant and Castle (Bakerloo and Northern) stations, this popular area has many shops, bars and restaurants.

Features

- One Bedroom
- South Facing Roof Terrace
- Period Features
- No Onward Chain
- Modern Kitchen
- Fabulous Condition

Iliffe Street, London, SE17



Second Floor

Total area (approx.): 53.2 sq. m (572.6 sq. ft)
Terrace area (approx.): 30.9 sq. m (332.6 sq. ft)