



## 19 Redcar Close

, Hartlepool, TS25 5QN

**£180,000**



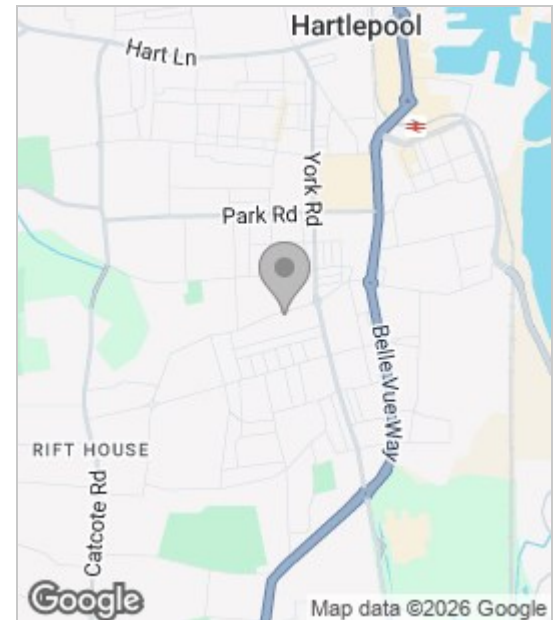
Igomove are pleased to market this extended and deceptively spacious four bedroom detached home, occupying a pleasant corner plot within a popular residential of Redcar Close in Hartlepool. Well positioned close to local schools, amenities and transport links, this spacious detached property presents an excellent opportunity for buyers seeking a substantial family home in a sought-after location.



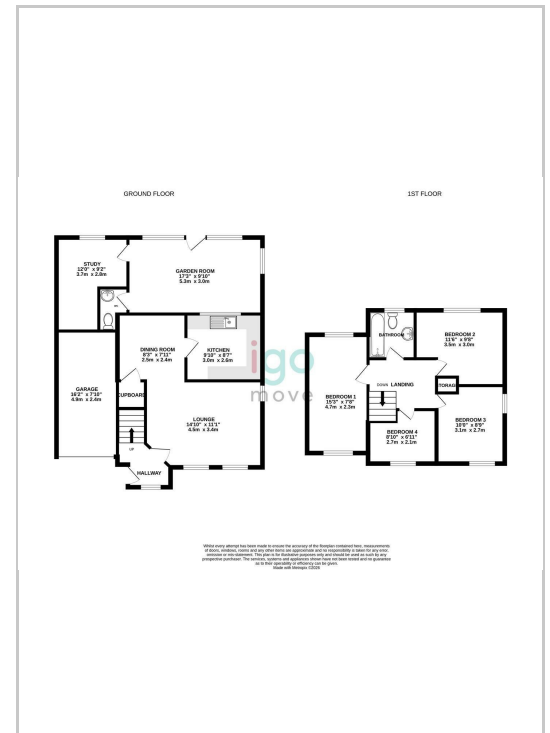
The property features a hallway leading into a welcoming lounge, separate dining room and a bright, impressive garden room extension overlooking the rear garden, creating an excellent additional reception space perfect for entertaining or relaxing. The fitted kitchen provides ample storage and workspace, whilst a useful ground floor study and cloakroom/WC add further practicality for growing families or home working.

To the first floor are four well-proportioned bedrooms and a family bathroom, with the layout offering flexibility for family life. Externally, the home benefits from a driveway leading to an integral garage, attractive front lawn and a low maintenance enclosed west facing rear garden enjoying a good degree of privacy. make this home your own and book your viewing today. Igomove are open 7 days a week.

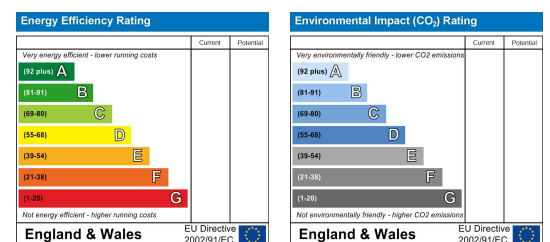
## Area Map



## Floor Plan



## Energy Efficiency Graph



These particulars, whilst believed to be accurate are set out as a general outline only for guidance and do not constitute any part of an offer or contract. Intending purchasers should not rely on them as statements of representation of fact, but must satisfy themselves by inspection or otherwise as to their accuracy. No person in this firm's employment has the authority to make or give any representation or warranty in respect of the property.