

COCKBURN
ESTATE AND LETTINGS AGENTS

Southold Rise

SE9 3BE

FOR SALE
COCKBURN
020 8859 8590

SOUTHOLD RISE



This beautifully presented three-bedroom terraced home on Southold Rise, Mottingham, offers an exceptional opportunity for growing families seeking a property finished to a wonderful standard throughout

Boasting 1039 sq ft of well-maintained living space, this inviting home features a spacious reception room, alongside a modern open plan kitchen/diner, perfect for relaxation and entertaining. The property thoughtfully combines comfortable accommodation with a modern aesthetic, comprising three well-proportioned bedrooms and a contemporary family bathroom to the first floor.

Externally, the property benefits from a generous garden to the rear, providing a delightful outdoor space for family activities and alfresco dining. Plentiful on-street parking is readily available for convenience. For those envisioning future expansion, there is significant potential to extend into the loft and to the rear, subject to the necessary planning permissions, allowing the property to evolve with your needs.

Situated in a fantastic location, this home offers excellent transport links nearby, making commuting straightforward. The area is well-served by a range of close-by schools and nurseries, making it an ideal setting for families.

All in all, a perfect home that will be snapped up in no time - contact us today to arrange your viewing!



Key Features:

- ❑ Three Bed Terraced Home
- ❑ Finished To A High Standard Throughout
- ❑ Generous Garden To Rear
- ❑ Potential To Extend Into Loft & To Rear STPP
- ❑ Plentiful On Street Parking
- ❑ Excellent Transport Links Nearby
- ❑ Fantastic Location
- ❑ Close To Schools & Nurseries
- ❑ Ideal For Growing Families
- ❑ Council Tax Band C - Royal Borough Of Greenwich



EPC: C

COUNCIL TAX BAND: C

TENURE: Freehold

For more information on this property or to arrange a viewing please call the office on

0208 859 8590

Alternatively, you can scan below to view all of the details of the property online.

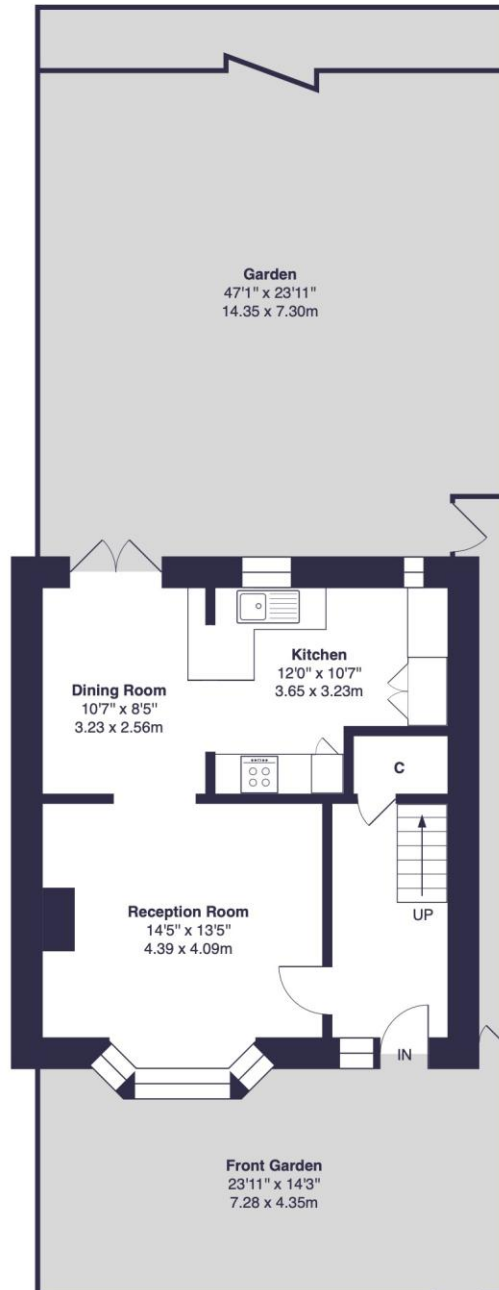


352 Footscray Road
New Eltham
London
SE9 2EB

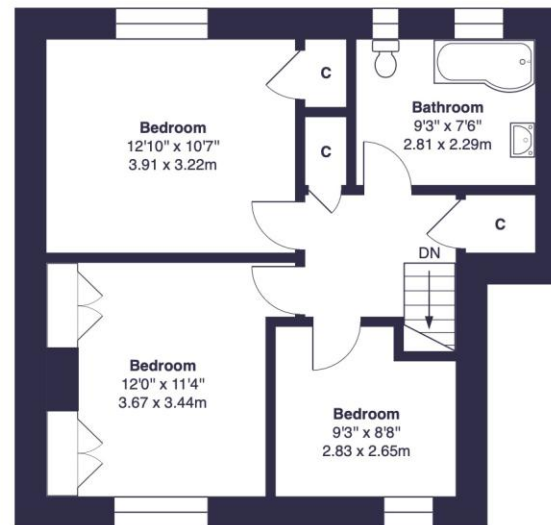


Southold Rise, SE9

Approximate Gross Internal Area = 1039 sq ft / 96.5 sq m



Ground Floor



First Floor

This floor plan was produced using RICS measurements standards 2nd edition.
For layout guidance only and not drawn to scale unless stated. Window and door openings are approximate.
Whilst every care is taken in the preparation of this plan, we would advise interested parties to check all dimensions, shapes and compass bearings prior to making any decisions reliant upon them. No liability is accepted for any errors.
By www.primesquarephotography.com / Copyright 2026