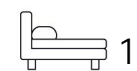




Living  
made  
better

Inverness Mews  
North Woolwich, E16 2SP



£1,600 PCM

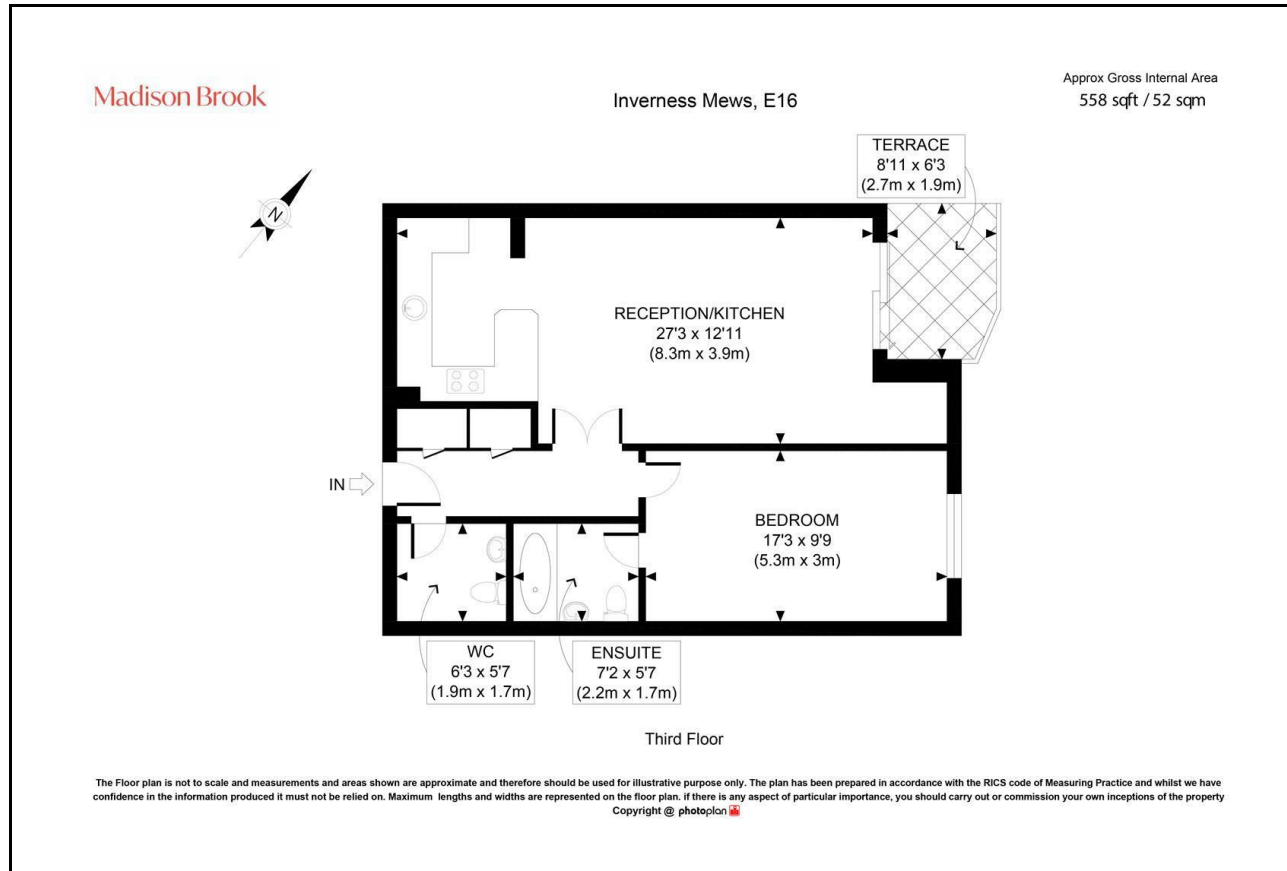
# Inverness Mews, North Woolwich, E16 2SP

Madison Brook

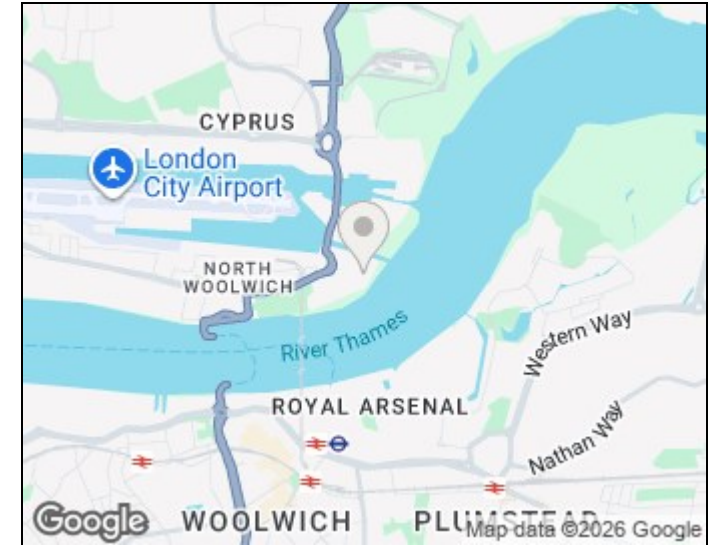
## Property Summary

A well-proportioned third floor one bedroom apartment with attractive river views, ideally located moments from King George V DLR. The property features a spacious 27ft open-plan reception/kitchen, a generous double bedroom with en-suite, an additional guest WC, and a private terrace. Underground allocated parking included.

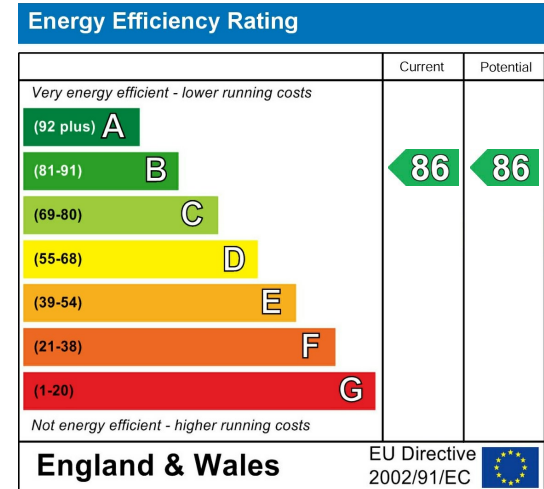
## Floorplan



## Area Map



## Energy Efficiency Graph



These particulars, whilst believed to be accurate are set out as a general outline only for guidance and do not constitute any part of an offer or contract. Intending purchasers should not rely on them as statements of representation of fact, but must satisfy themselves by inspection or otherwise as to their accuracy. No person in this firm's employment has the authority to make or give any representation or warranty in respect of the property.

Unit B 20 Western Gateway, Royal Victoria  
Dock, London, E16 1BS  
Tel: 020 3946 6000 Email:  
docklands@madisonbrook.com  
<https://madisonbrook.com/>