



Ryculff Square, SE3

£325,000

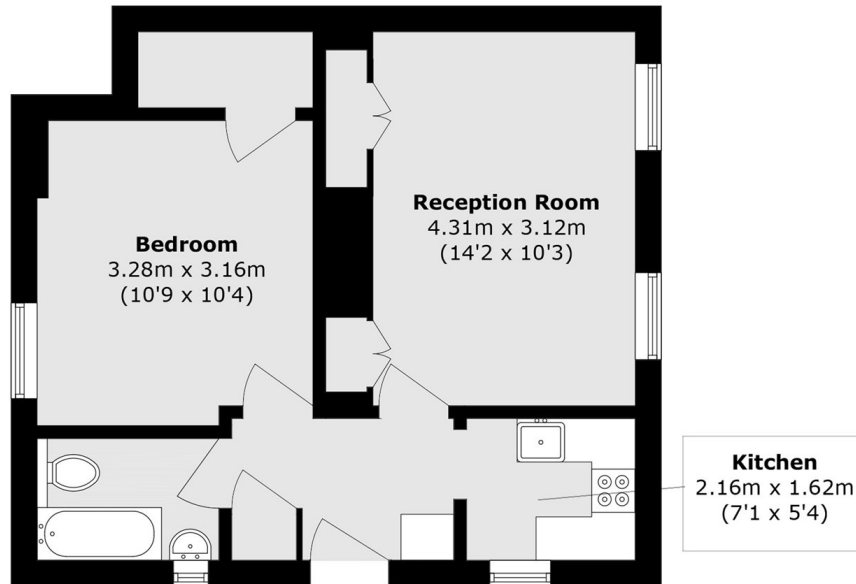
A well-proportioned one bedroom ground floor flat with its own private entrance, offering excellent living space in a sought-after residential location. The property comprises a spacious reception room with plenty of natural light, a separate kitchen with ample storage and worktop space, a generous double bedroom and a family bathroom. The layout is practical and well balanced, making it an ideal first-time purchase or investment.

Ryculff Square is perfectly placed for the open spaces of the heath and Greenwich Park. Blackheath Village offers an array of boutique shops, farmers market, restaurants and bars, whilst Blackheath station provides access to London Bridge, Charing Cross and Victoria amongst others.

Features

- Ground Floor
- Private Entrance
- One Double Bedroom
- Sought After Location
- No Onward Chain
- Close To The Heath

Ryculff Square, London, SE3



Total area (approx.): 40.6 sq. m (437.0 sq. ft)