



RUTLAND HOUSE, NW6

£2,850 per week

Two Double Bedrooms
Immaculate Condition
Two Bathrooms
Private Patio
Communal Gardens
Close to Transport

@marshandparsons
marshandparsons.co.uk

MARSH &
PARSONS



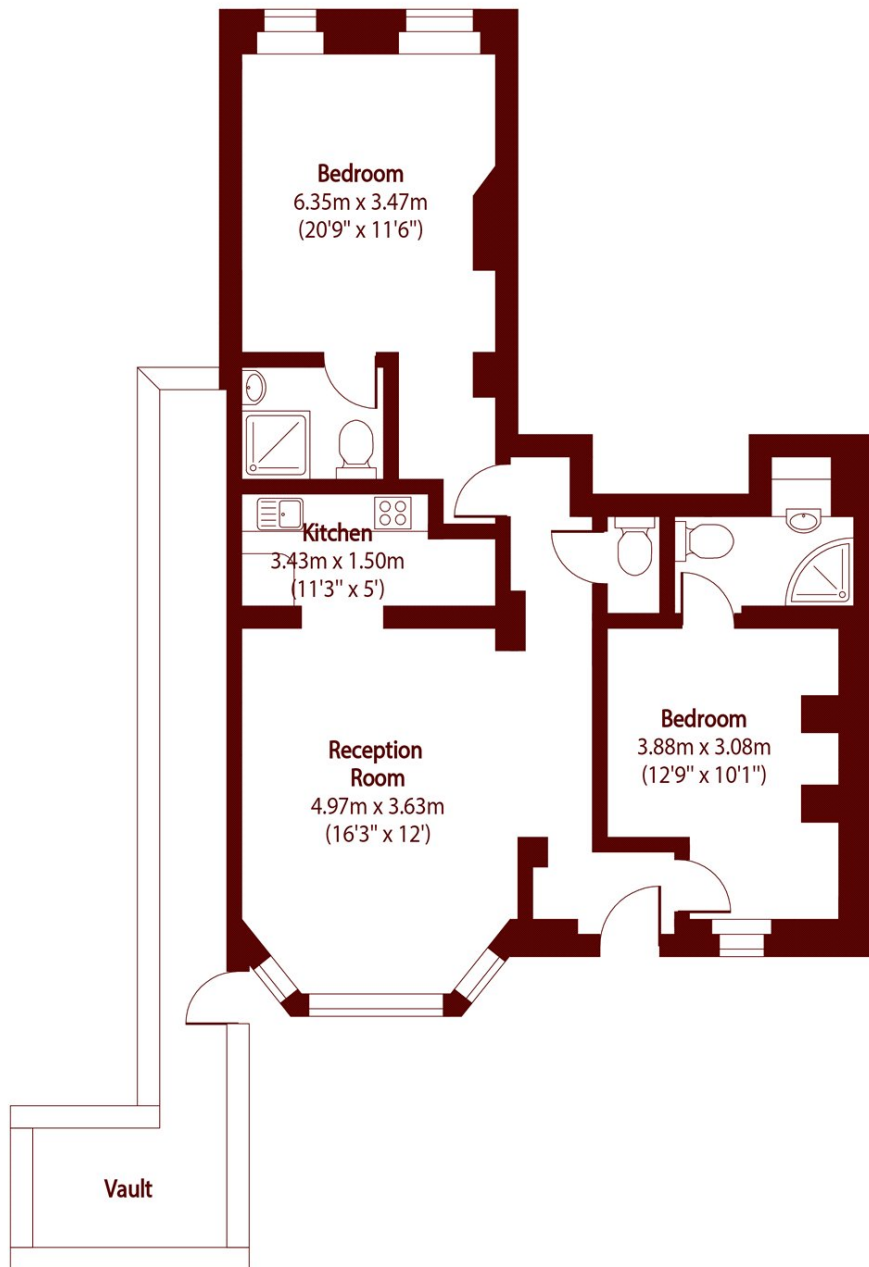
ABOUT THE PROPERTY

This stunning two-bedroom flat is situated on the lower ground floor of a beautiful red brick mansion block with your own private entrance and patio garden. This property has been finished to the highest standard and comprises of a bright and airy reception leading to a semi open-plan kitchen, an additional guest w/c and two generous sized double bedrooms both featuring ample storage and luxury tiled en-suite bathrooms with walk-in showers. The property benefits from beautiful oak flooring throughout, a private patio garden at the front of the apartment and immaculately maintained communal gardens to the rear.

Greencroft Gardens is a popular residential street located



STEP INSIDE RUTLAND HOUSE



Total area (approx): 69.82 sq m (752 sq. ft)
(Excluding Vault)

Vault total area (approx): 13.07 sq m (141 sq. ft)

Queen's Park
020 7871 5050

Energy Rating: C We aim to make our particulars both accurate and reliable. However, they are not guaranteed; nor do they form part of an offer or contract. If you require clarification on any points then please contact us, especially if you're traveling some distance to view. Please note that appliances and heating systems have not been tested and therefore no warranties can be given as to their good working order

MARSH &
PARSONS