



RAVENSBOURNE PARK, SE6

£550,000

Two double bedrooms
Two bathrooms
Circa 950 sq ft
Private garden
Off-street parking for two cars
Energy rating: D

@marshandparsons
marshandparsons.co.uk

MARSH &
PARSONS



ABOUT THE PROPERTY

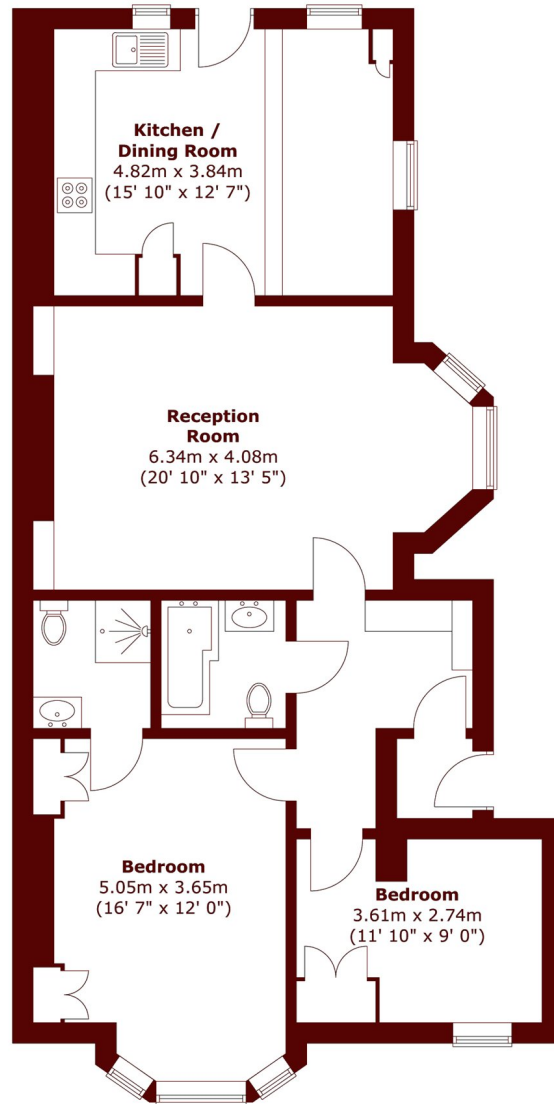
This beautifully presented share of freehold ground floor apartment measures in at circa 950 sq ft and boasts sole use of a very large garden.

Prepare to be impressed with this stylish home as benefits include own private entrance, two bathrooms, 21' lounge, 17' main bedroom, 16' kitchen/diner and two off-street parking spaces!

The private garden wraps around the living areas and feels ever so tranquil. There is a choice of stations nearby along with ample amenities.



STEP INSIDE RAVENSBOURNE PARK



Total area (approx.) : 87.6 sq. m (943 sq. ft)

Brockley
020 8629 8164

Energy Rating: D We aim to make our particulars both accurate and reliable. However, they are not guaranteed; nor do they form part of an offer or contract. If you require clarification on any points then please contact us, especially if you're traveling some distance to view. Please note that appliances and heating systems have not been tested and therefore no warranties can be given as to their good working order

**MARSH &
PARSONS**