

EUGEN COTORANU

Personal Estate Agent
exp

Millman Court, Bloomsbury - Prime Central London

Guide Price: £600,000-£625,000

🛏 2 🚿 1 🚗 1



A rare Bloomsbury opportunity in the heart of Central London. With a private balcony, beautiful communal gardens and world-class amenities on your doorstep, you'll be hard pressed to find a better option.

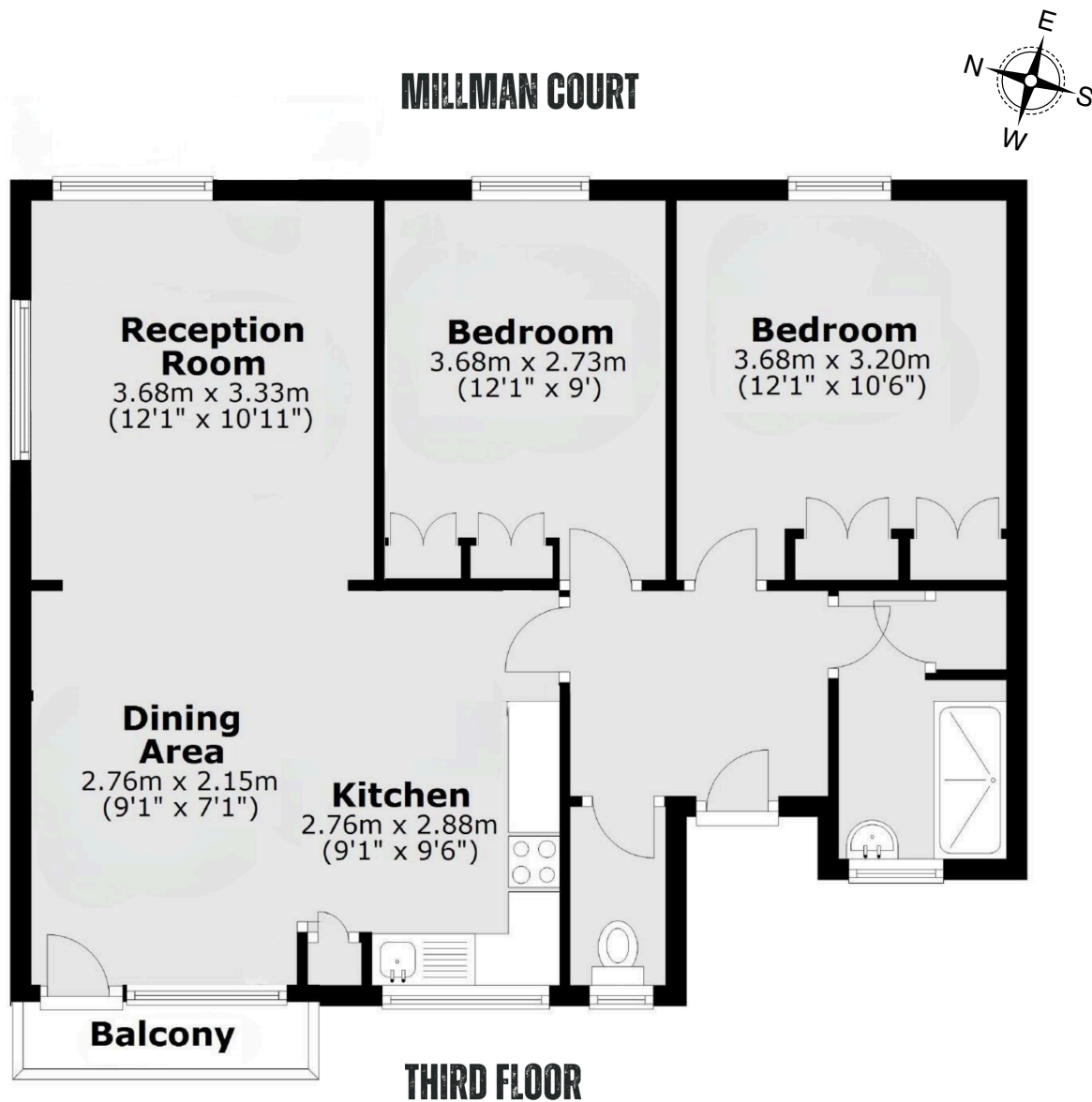
SELL | BUY | LET | INVEST
07774807085 | eugen.cotoranu@exp.uk.com

EUGEN COTORANU

Personal Estate Agent

exp

- Please Quote EC0801
- South Facing
- Excellent transport links
- Open-plan kitchen/dining area
- 90% Congestion Charge discount
- Guide Price: £600,000-£625,000
- Private balcony
- Beautiful communal gardens
- Chain free | Vacant possession
- Potential to create a 3-bedroom home



Total area: approx. 67.0 sq. metres (721.2 sq. feet)

SELL | BUY | LET | INVEST

07774807085 | eugen.cotoranu@exp.uk.com