

INTRODUCING

Grandfield Avenue, Watford WD17 4PQ

2 Bedroom Apartment - Purpose Built to let

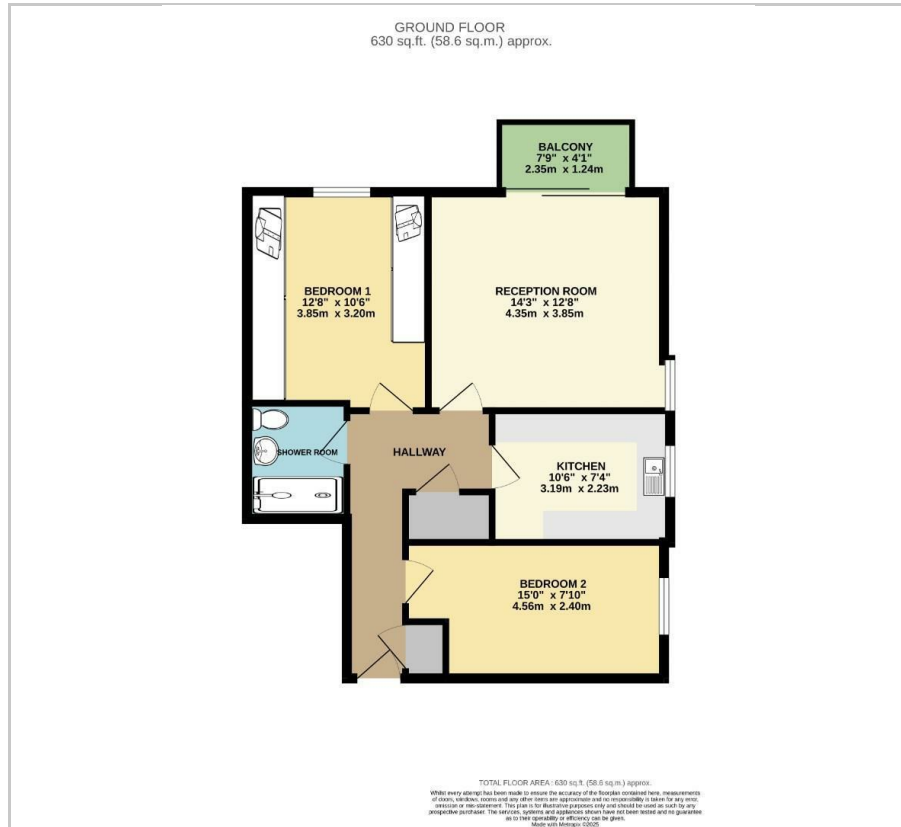
£1,800 Per month



2 Bedrooms/1 Bathrooms EPC Rating: C

- Newly Re-furbished First Floor Apartment
- Lounge/Diner With Balcony
- Replacement Double Glazing to most windows
- Garage
- New Flooring & Re-decorated
- Re-fitted Kitchen
- 2 Double Bedrooms
- Shower Room
- Council Tax Band D
- Available Immediately

Floor Plan



Map



Energy Efficiency

Energy Efficiency Rating		Current	Potential
Very energy efficient - lower running costs			
(92 plus) A			
(81-91) B			
(69-80) C		77	79
(55-68) D			
(39-54) E			
(21-38) F			
(1-20) G			
Not energy efficient - higher running costs			
England & Wales		EU Directive 2002/91/EC	



These particulars, whilst believed to be accurate are set out as a general outline only for guidance and do not constitute any part of an offer or contract. Intending purchasers should not rely on them as statements of representation of fact, but must satisfy themselves by inspection or otherwise as to their accuracy. No person in this firm's employment has the authority to make or give any representation or warranty in respect of the property.