

Deodar Road, SW15

£370,000

A beautifully presented one bedroom apartment set within this striking contemporary development on Deodar Road, moments from the River Thames.

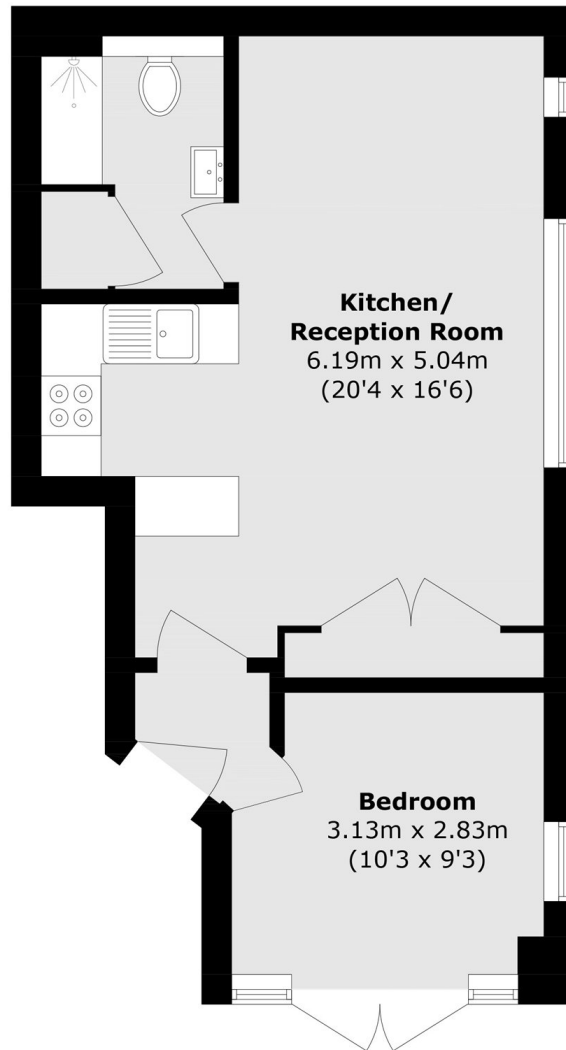
The property offers approximately 440 sq ft of well-balanced accommodation, comprising a bright open-plan kitchen/reception room measuring over 20 ft, with attractive wood flooring and large arched windows that flood the space with natural light and provide a lovely green outlook. The modern kitchen is thoughtfully arranged with integrated appliances and ample storage, ideal for both everyday living and entertaining.

Blades Court is superbly located for the cafés, restaurants and shopping facilities of Putney High Street, as well as the green open spaces of Wandsworth Park and the Thames Path. Transport links are excellent, with Putney Mainline Station offering swift access into London Waterloo, and East Putney Underground Station (District Line) providing easy connections across central London.

Features

- 440 sq. ft
- One bedroom
- One Bathroom
- Open plan kitchen/living
- Chain Free
- Excellent Transport Links

Deodar Road, London, SW15



Total area (approx.): 40.8 sq. m (439.1 sq. ft)