



OAKFIELD



Baxendale Way, Uckfield, TN22 5GB

Price Guide £425,000



## Baxendale Way, Uckfield, TN22 5GB

Guide Price £425,000 - £450,000

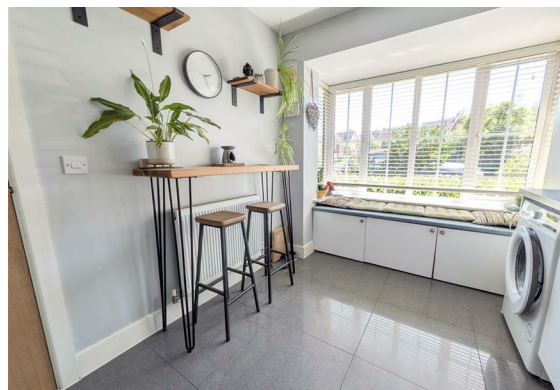
Situated within the highly desirable Fernley Park development in Ridgewood, this beautifully presented four-bedroom semi-detached home offers stylish, spacious accommodation arranged over three floors, perfectly suited to modern family living.

The attractive part tile-hung, bay-fronted façade creates an excellent first impression, while the interior has been thoughtfully designed to provide versatile and light-filled living spaces throughout. The welcoming entrance hall includes a convenient cloakroom/WC and leads to a contemporary kitchen/breakfast room at the front of the property, finished to a high standard and ideal for everyday family life.

To the rear, the impressive open-plan lounge/dining room forms the heart of the home. Enhanced by Velux roof windows and French doors opening directly onto the garden, this bright and expansive space is perfect for both relaxing and entertaining, seamlessly connecting indoor and outdoor living. The first floor comprises an elegant principal bedroom complete with a modern en-suite shower room, a generous second double bedroom, and a stylish family bathroom. The top floor provides two further well-proportioned bedrooms, offering excellent flexibility for growing families, guest accommodation, or those seeking a dedicated home office.

Outside, the property enjoys a level, low-maintenance rear garden designed for easy upkeep and year-round enjoyment, providing an ideal setting for al fresco dining and entertaining. There is also off road parking and a garage completing this exceptional family home.

Combining generous proportions, contemporary styling and a sought-after location, this superb home presents an outstanding opportunity for buyers seeking space, practicality and modern living in one of Ridgewood's most popular developments.





### Living/Dining Room

20'5" x 15'10" (6.22m x 4.83m)

### Kitchen

14'7" x 8'6" (4.45m x 2.59m)

### WC

### Bathroom

6'9" x 6'2" (2.06m x 1.88m)

### Bedroom One

13'11" x 8'8" (4.24m x 2.64m)

### Ensuite

### Bedroom Two

12'1" x 8'9" (3.68m x 2.67m)

### Bedroom Three

12'2" x 10'3" (3.71m x 3.12m)

### Bedroom Four

10'3" x 8'11" (3.12m x 2.72m)

### Garage

Council Tax Band E - £3,334.75 Per Annum

## Floor Plan



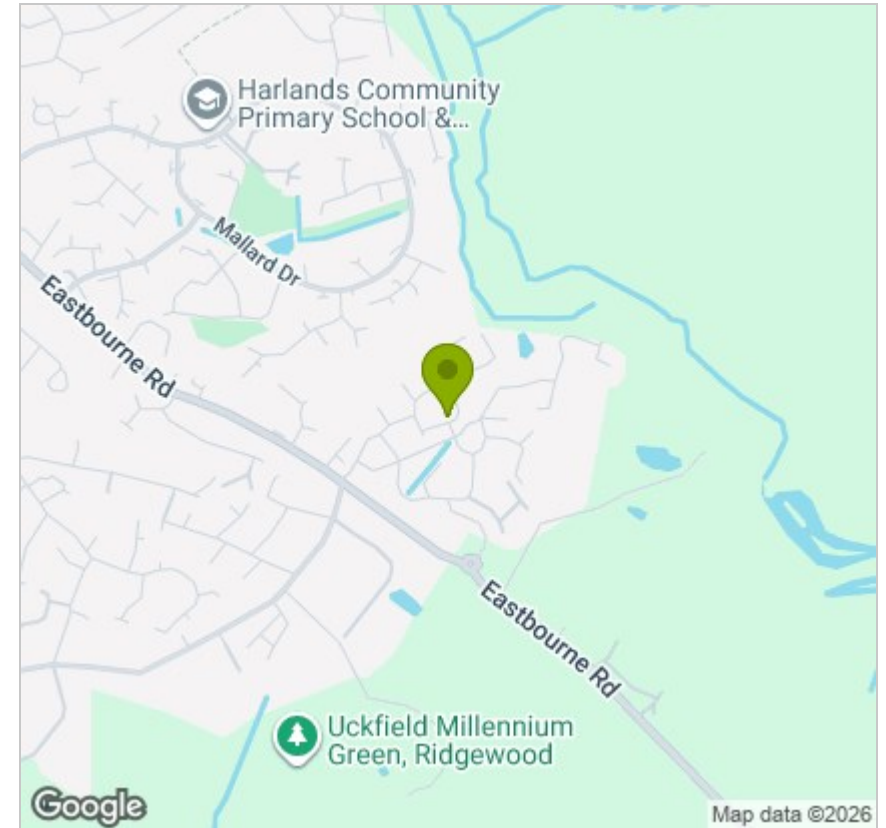
## Viewing

Please contact us on 01825 762132 if you wish to arrange a viewing appointment for this property or require further information.

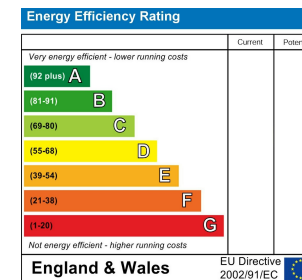
These particulars, whilst believed to be accurate are set out as a general outline only for guidance and do not constitute any part of an offer or contract. Intending purchasers should not rely on them as statements of representation of fact, but must satisfy themselves by inspection or otherwise as to their accuracy. No person in this firm's employment has the authority to make or give any representation or warranty in respect of the property.

108-110 High Street, Uckfield, East Sussex, TN22 1PX  
 uckfield@oakfieldproperty.co.uk

## Area Map



## Energy Efficiency Graph



01825 762132  
 www.oakfieldproperty.co.uk