

EATON PLACE  
BELGRAVIA, SW1X

MARSH & PARSONS

# WELCOME TO EATON PLACE



## ABOUT THE HOME

Positioned within an elegant period building and one of Belgravia's most prestigious addresses, this beautifully composed apartment offers three generously sized bedrooms, complemented by a separate dressing room.

- Three bedrooms
- Private roof terrace
- Prestigious Belgravia address
- Three bathrooms
- Split-level
- Dressing room





## THE FINER DETAILS

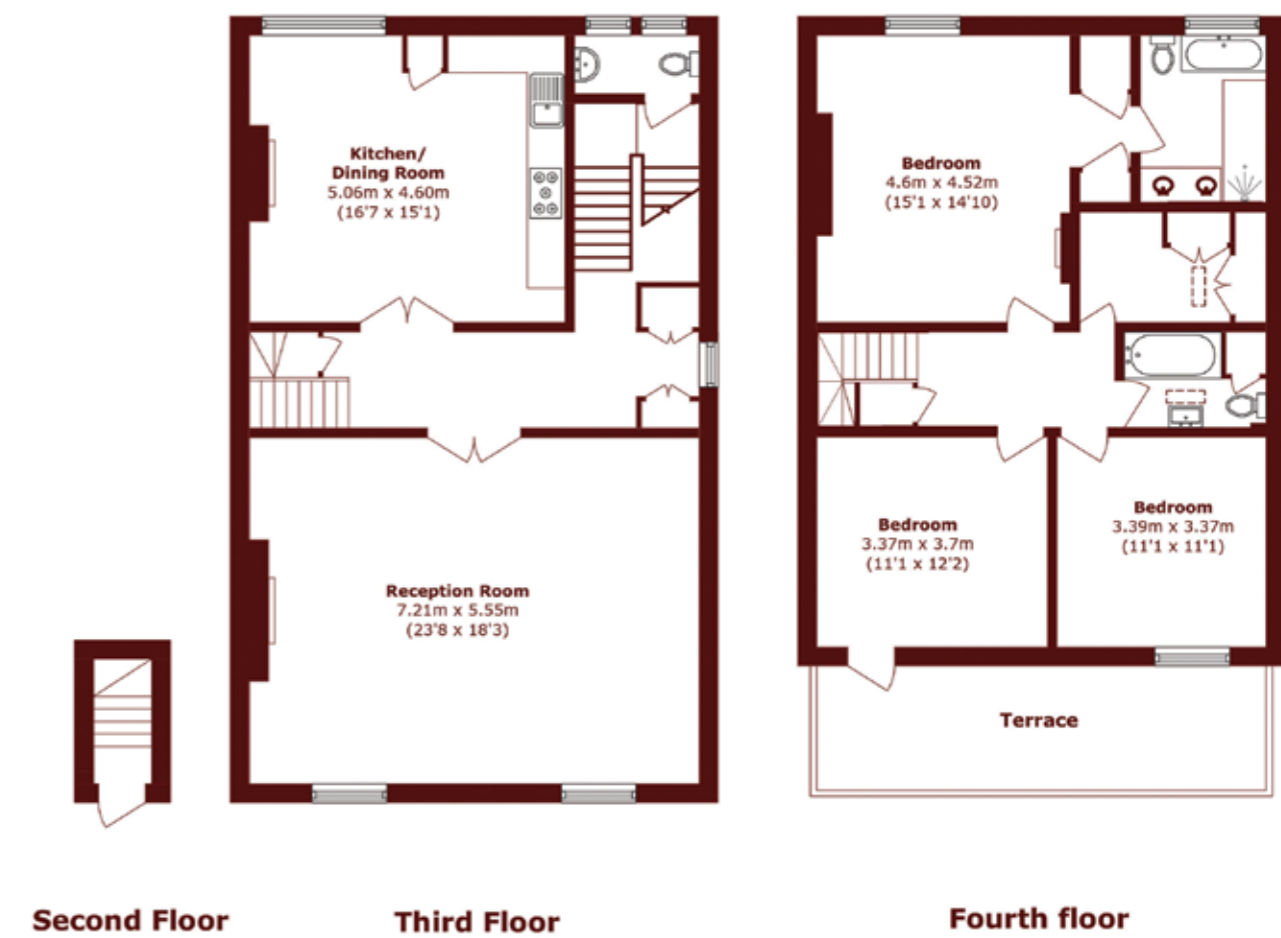
The principal reception room is both gracious and inviting, with plenty of natural light, while subtle period detailing enhances the sense of heritage and the overall proportions provide a versatile setting for both formal entertaining and relaxed living.

The kitchen is thoughtfully arranged, featuring contemporary cabinetry and integrated appliances, seamlessly balancing functionality with understated style. The apartment has a large private roof terrace with picturesque views over Belgravia.

Eaton Place is a popular residential address in Belgravia, close to the boutique shops and restaurants of Elizabeth Street. Sloane Square Underground station is easily accessible.



# STEP INSIDE EATON PLACE



**Chelsea**  
 Rawlings House 2a Milner Street, SW3 2PU  
 Sales: 020 7591 5580

Energy rating: D. We aim to make our particulars both accurate and reliable. However, they are not guaranteed; nor do they form part of an offer or contract. If you require clarification on any points then please contact us, especially if you're traveling some distance to view. Please note that appliances and heating systems have not been tested and therefore no warranties can be given as to their good working order.

Total approx. floor area 1,689.9 sq. ft (157 sq. m)  
 Terrace approx. floor area 154.1 sq. ft (14.32 sq. m)

MARSH *&* PARSONS