



## Amyand Park Road, TW1

### £580,000

This stunning apartment occupies part of the first floor of an impressive Victorian property, combining period charm with modern living. The property is offered with no onward chain, making it an ideal opportunity for a smooth and hassle-free purchase.

Amyand Park Road is located in the heart of St Margarets village. The property is 0.5 miles from St Margarets high street with its boutique shops, cafés and train station which has links into London Waterloo. Richmond Train Station is 1.5 miles away. Amyand Park Road is also within the catchment area for local OFSTED outstanding primary and secondary schools. Marble Hill Park and the River Thames are also close by.

### Features

- Victorian Conversion
- Two Double Bedrooms
- Share Of Freehold
- Central Location
- Great Condition
- Communal Garden



## Amyand Park Road, TW1

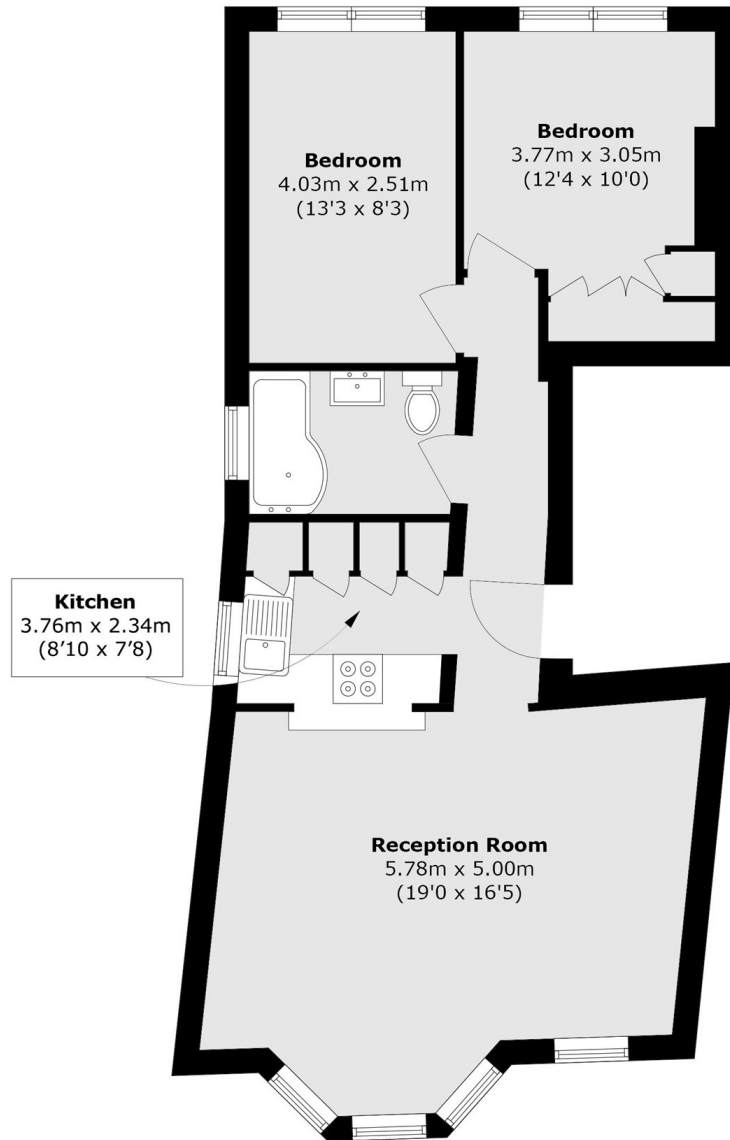
Accessed via a private hallway, the property opens into a bright and expansive open-plan living area, complete with a fully fitted kitchen and an abundance of natural light throughout.

The accommodation further comprises two generously sized double bedrooms and a spacious family bathroom, all thoughtfully arranged off the central hallway.

Extending to just under 700 sq ft, the apartment also benefits from a share of the freehold and access to a beautifully maintained communal garden.



# Amyand Park Road, , TW1



Total area (approx.): 65.0 sq. m (700.0 sq. ft)