



Avenue Gardens, W3

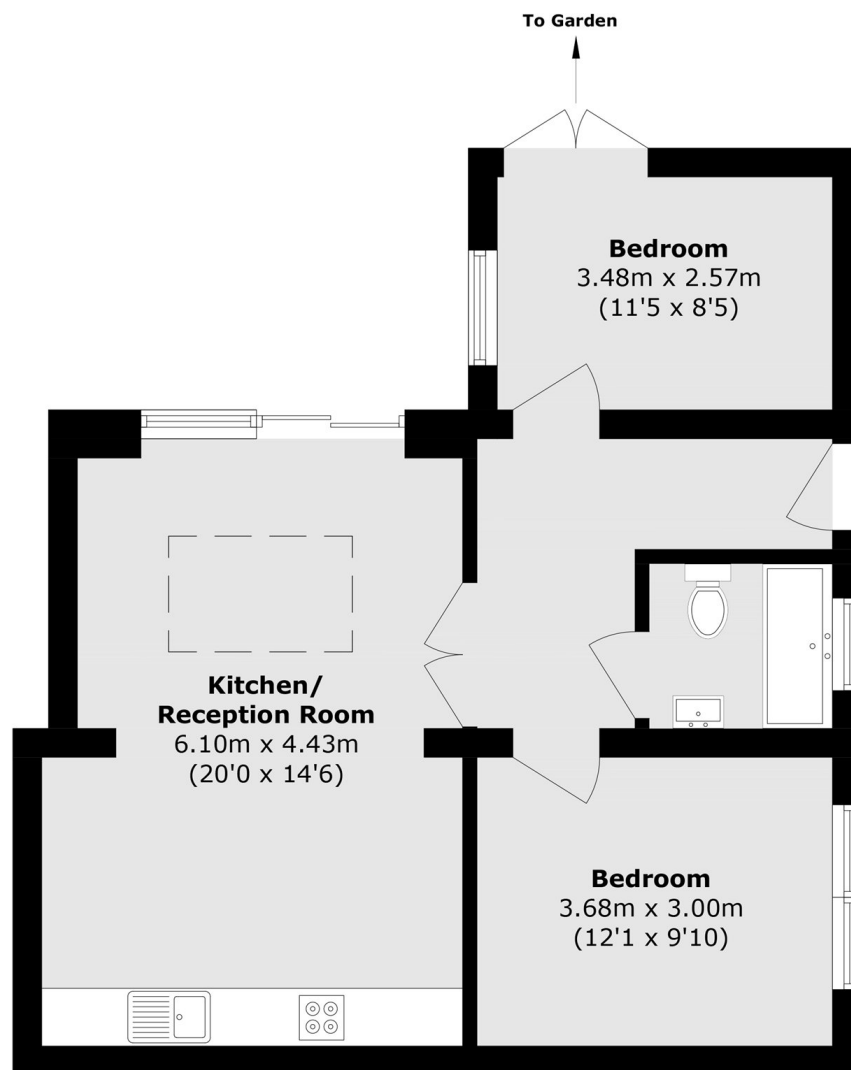
£625,000

Avenue Gardens situated in the highly regarded Mill Hill Conservation area. A newly converted two bedroom ground floor apartment with its own private garden. The flat has been finished to the highest standard throughout, has access to permit parking on the street and offered with no onward chain.

Features

New Conversion
Two bedrooms
Private Garden
Permit Parking
Ground Floor
No Chain

Avenue Gardens, London, W3



Total area (approx.): 60.2 sq. m (648.1 sq. ft)