

Payton  
Jewell  
Caines



149 Shelone Road, Neath - SA11 2NE  
Neath

Offers Over £158,000

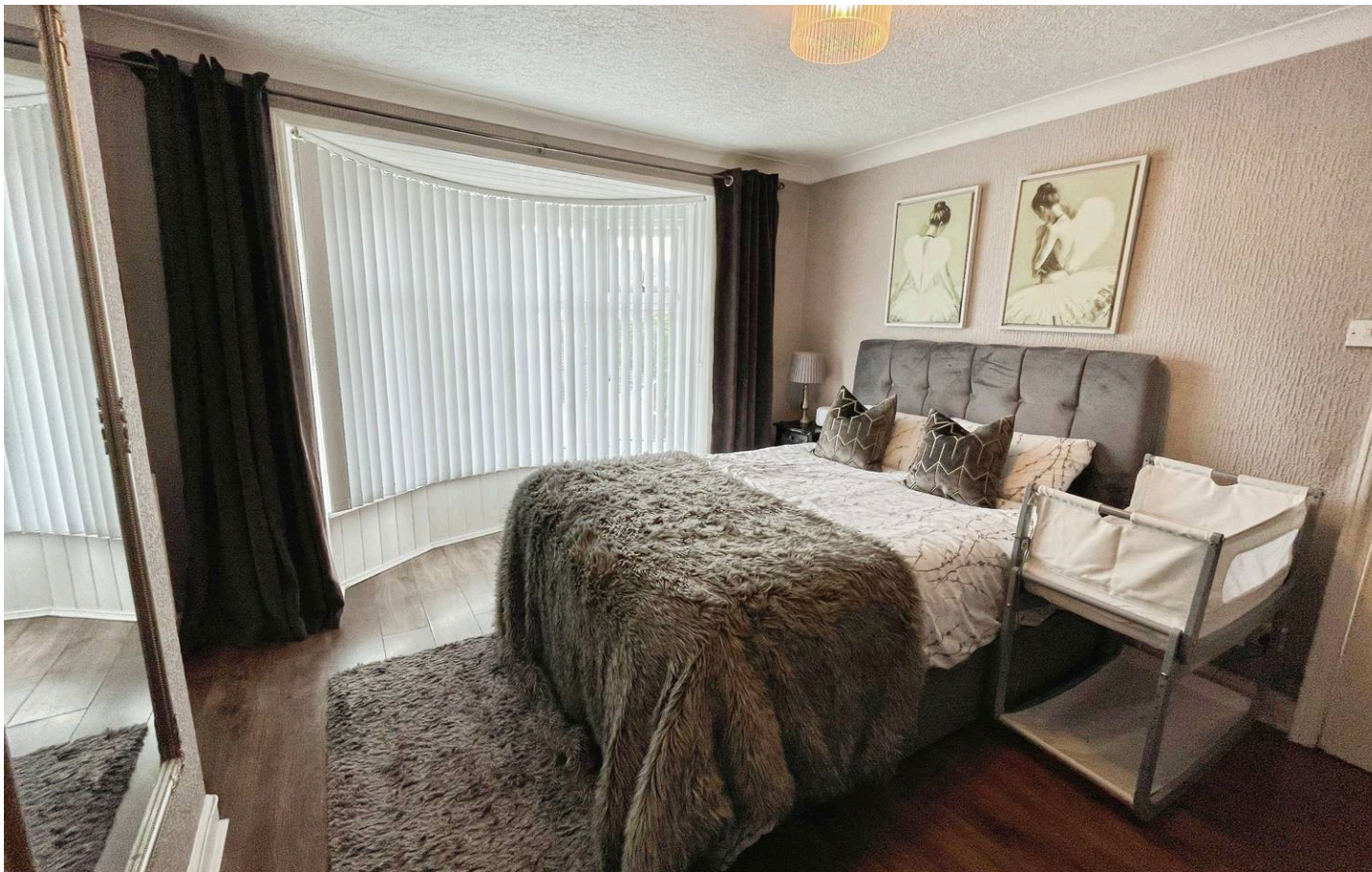


## 149 Shelone Road

Neath

We are pleased to present for sale this three bedroom semi detached house located in the popular residential area of Briton Ferry. The property has been modernised by the current owner and would make an ideal first time purchase or family home. Accommodation briefly comprises to the ground floor entrance hall, lounge, kitchen/diner. To the first floor three bedrooms and family bathroom. Externally to the rear is an enclosed tiered garden with gated access to rear lane and single detached garage. To the front the property sits at an elevated position approached from steps leading to front door.





- 3 Bed Semi Detached House
- First Floor Family Bathroom
- Walking Distance To Briton Ferry Train Station
- Enclosed Rear Garden With Detached Single Garage
- Open Plan Lounge/Diner
- Good M4 Links



### **Entrance Hall**

Enter property via composite front door with frosted glass panels. Ceiling is papered with ceiling light and coving. Papered walls. Radiator. Staircase to first floor. Built in under stair storage cupboard housing the electric meter and gas meters. PVCu frosted double glazed window. Laminate floor. Doors leading off.

### **Reception 1**

3.55m x 3.02m (11' 8" x 9' 11") Ceiling is papered with ceiling light and coving. Papered walls. Radiator. PVCu double glazed bay window looks to the front aspect. Focal point to the room is a wooden mantle with hearth and surround. Laminate flooring.

### **Open Plan Kitchen/Diner**

5.57m x 3.53m Max (18' 3" x 11' 7" Max) Ceiling is skimmed and emulsioned with inset spotlights and pendant light. Walls are skimmed and emulsioned with one feature papered wall. Radiator. PVCu double glazed window looks to the rear aspect. PVCu double glazed french doors leading to rear garden. Chimney breast with alcoves to either side. Kitchen comprises a range of wall and base units with coordinating work surfaces. One and half ceramic inset sink with drainer and mixer tap. Range cooker with overhead extractor hood. Space for fridge freezer. Space and plumbing for automatic washing machine. Stone flooring. Adequate space for dining table and chairs. Landing Via stairs with fitted carpet and balustrade. Ceiling is skimmed and emulsioned with ceiling light and coving. Walls are papered. PVCu frosted double glazed window to the side. Fitted carpet. All doors leading off.

### **Bedroom 1**

3.56m x 3.55m (11' 8" x 11' 8") Ceiling is papered with ceiling light and coving. Papered walls. Radiator. PVCu double glazed bay window looking to the front aspect. Laminate flooring.

### **Bedroom 2**

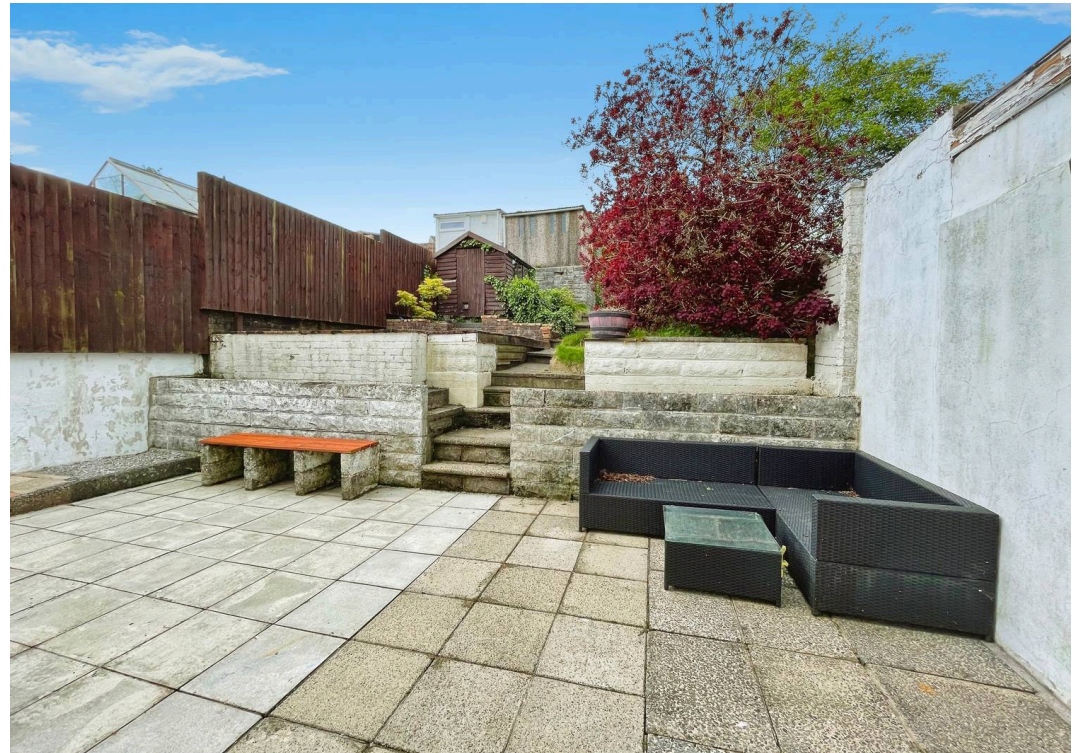
3.09m x 2.96m (10' 2" x 9' 9") Ceiling is papered with ceiling light and access to the loft. Coving. Papered walls. Radiator. PVCu double glazed window looking to the rear aspect. Laminate flooring. Built in storage housing combination gas boiler.

### **Bedroom 3**

2.63m x 1.93m (8' 8" x 6' 4") Ceiling is papered with ceiling light and coved. Papered walls. Radiator. PVCu double glazed window looks to the front of the property. Fitted carpet.

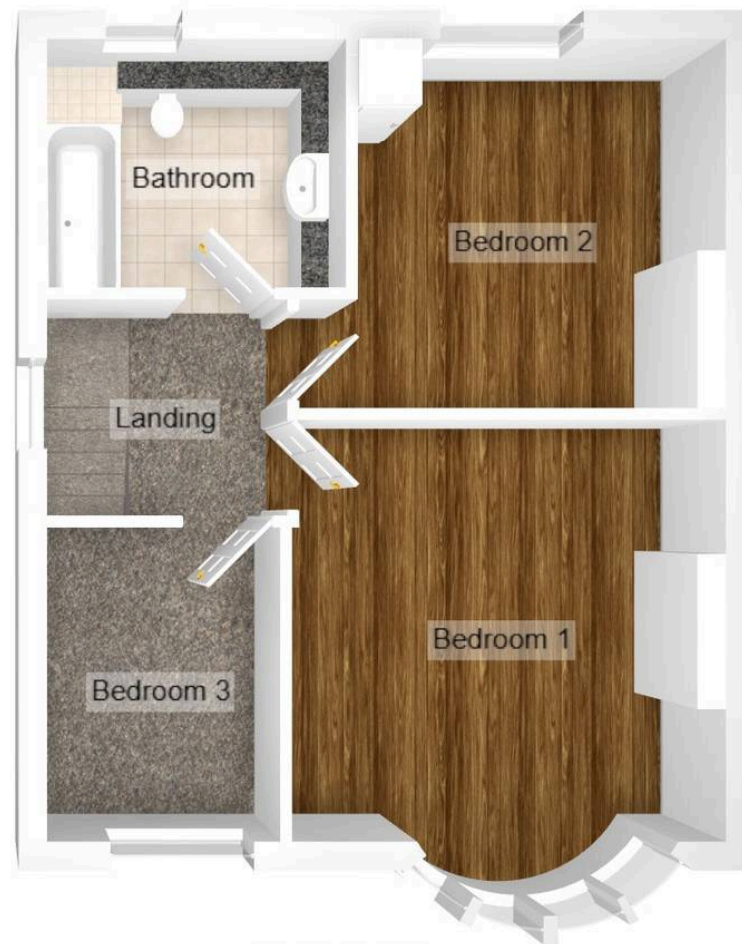
### **Family Bathroom**

2.48m x 2.07m (8' 2" x 6' 9") Ceiling is skimmed and emulsioned with inset spotlights. Floor to ceiling ceramic wall tiles. PVCu frosted double glazed window looks to the rear aspect. Wall mounted heated towel rail. Bathroom is a three piece suite comprising low level W.C., wash hand basin with vanity and inset double ended Jacuzzi bath with over head shower. Tiled flooring





GROUND FLOOR



FIRST FLOOR

## Payton Jewell Caines

Payton Jewell Caines, 53 Station Road – SA13 1NW

01639891268 • porttalbot@pjchomes.co.uk • pjchomes.co.uk/

These property details are provided as a general guide only. Whilst we aim for accuracy, measurements, photographs, floor plans, and descriptions should not be relied upon as statements of fact. Buyers should carry out their own checks regarding the property, services, and specifications. Fixtures and fittings are only included if specifically stated. Appliances and services have not been tested.