



KINGSTON ROAD, SW19

£2,300 PCM

- Two Double Bedroom
- Two Bathrooms
- Private Patio Area
- Secure Gated Parking
- Re-painted throughout
- Unfurnished





ABOUT THE HOME

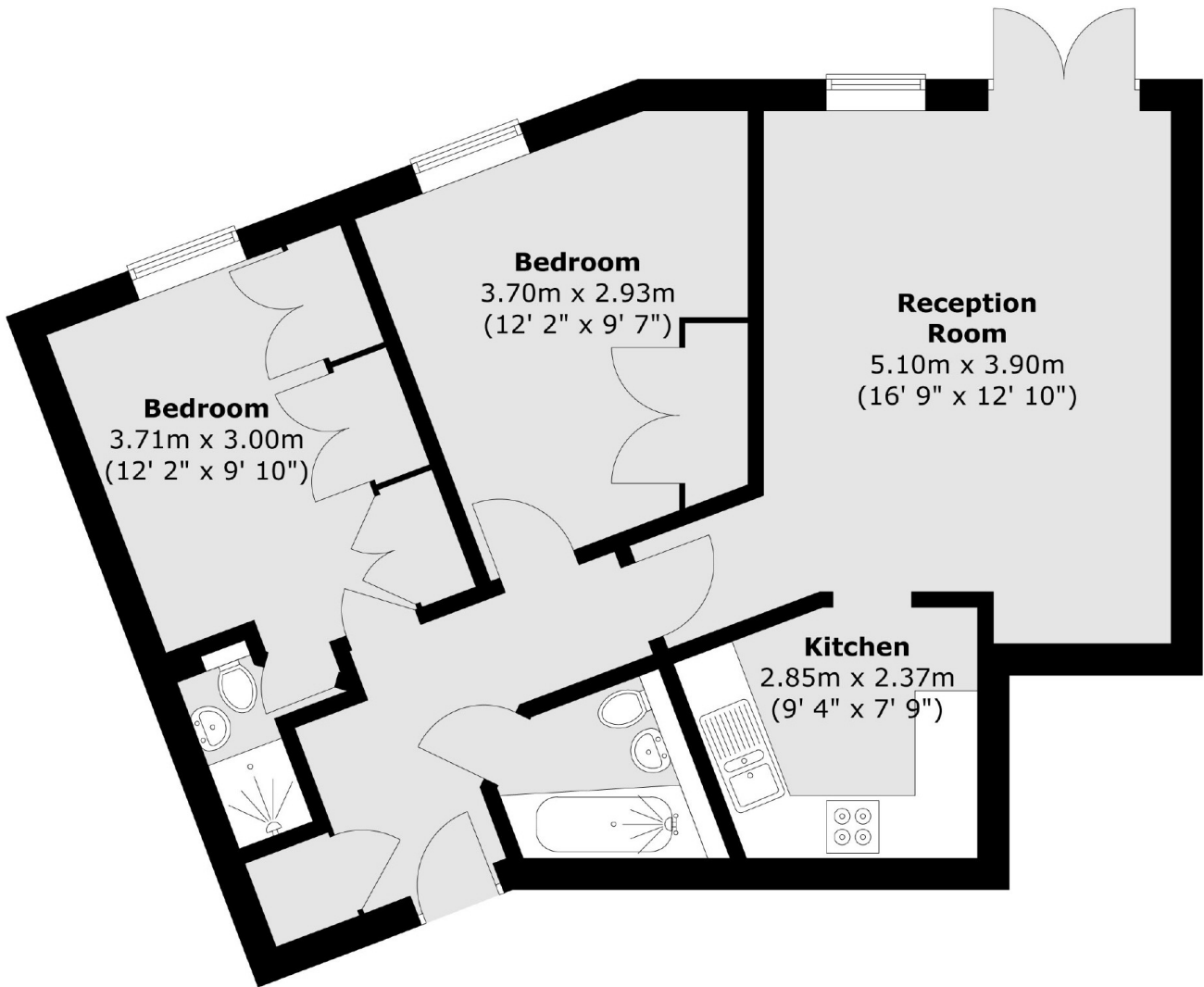
A two double bedroom/two bathroom apartment with allocated parking and patio area. Including a fitted kitchen, large reception room with doors leading directly onto a private patio area/communal gardens, fitted wardrobes, double glazing throughout and a coded entry system.

Warwick Court located on Kingston Road is one of the popular private developments situated in the Wimbledon area, which is conveniently situated for its local and town centre shops, restaurants, bars, and is close by to Wimbledon Tram and mainline station with links to Central London and the surrounding areas.





Ground Floor



Total area (approx.) : 63.8 sq. m (687 sq. ft)

JACKSONS EARLSFIELD

372-374 Garratt Lane,
Earlsfield, London, SW18 4ES
Sales: 020 8971 7979
Lettings: 020 8971 7070

Energy Rating: C We aim to make our particulars both accurate and reliable. However they are not guaranteed; nor do they form part of an offer or contract. If you require clarification on any points then please contact us, especially if you're traveling some distance to view. Please note that appliances and heating systems have not been tested and therefore no warranties can be given as to their good working order.