



57 Wheat Fields, Grove
£520,000

Waymark

57 Wheat Fields

Grove, Oxfordshire

NO CHAIN This impressive four-bedroom detached town house delivers a superb standard of modern living, offering generous and well-planned accommodation ideal for families in a prime residential setting. Upon entering, a entrance hall leads through to a stunning kitchen/dining room, thoughtfully designed as a sociable and practical heart of the home. Finished with high-quality fittings and offering ample space for both everyday dining and entertaining, this room is perfectly suited to modern family life. The spacious living room is flooded with natural light and features an attractive bay window, creating a charming focal point. Completing the ground floor accommodation is the cloakroom. Upstairs, all four bedrooms are generous double rooms, ensuring no compromise on space for family members or guests. The impressive master suite benefits from a dedicated dressing area and a stylish ensuite shower room, providing a private retreat. The remaining bedrooms are served by a contemporary family bathroom, finished to a high standard.



57 Wheat Fields

Grove, Oxfordshire

Designed with energy efficiency in mind, the property features solar panels, a waste water heat recovery system, and an electric vehicle charging point, helping to reduce both running costs and environmental impact.

- Beautiful Detached Town House
- Stunning Kitchen/Dining Room & Living Room With Feature Bay Window
- All Four Double Bedrooms
- Impressive Master Suite With Dressing Area & Ensuite
- Garage & Driveway Directly To The Side of The Home
- No Onward Chain - Viewing Highly Advised!
- Energy Efficient Home - Solar Panels & Electric Car Charging Point





57 Wheat Fields

Grove, Oxfordshire

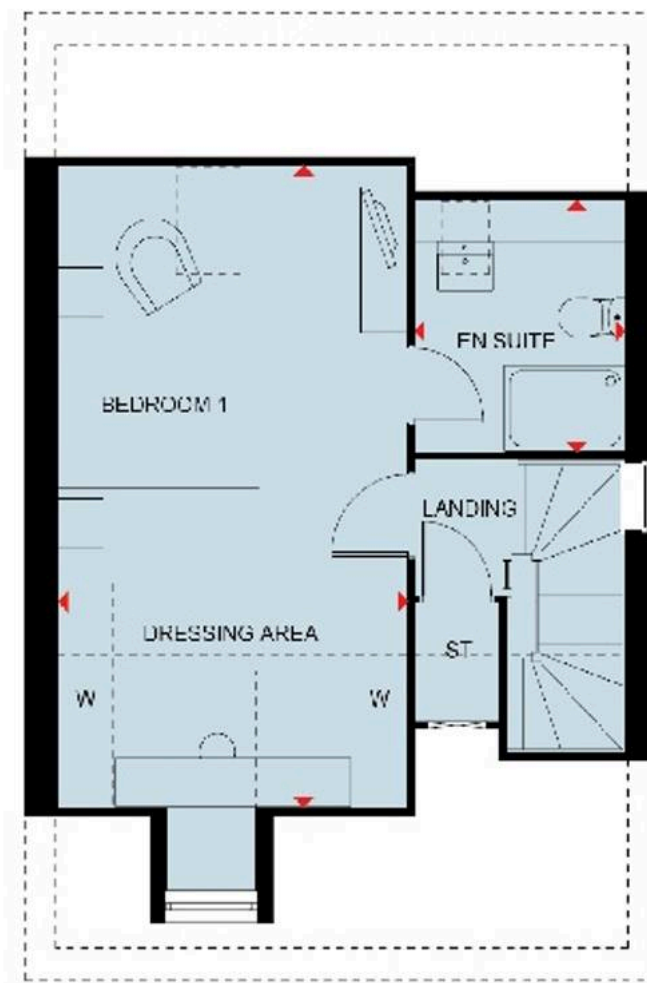
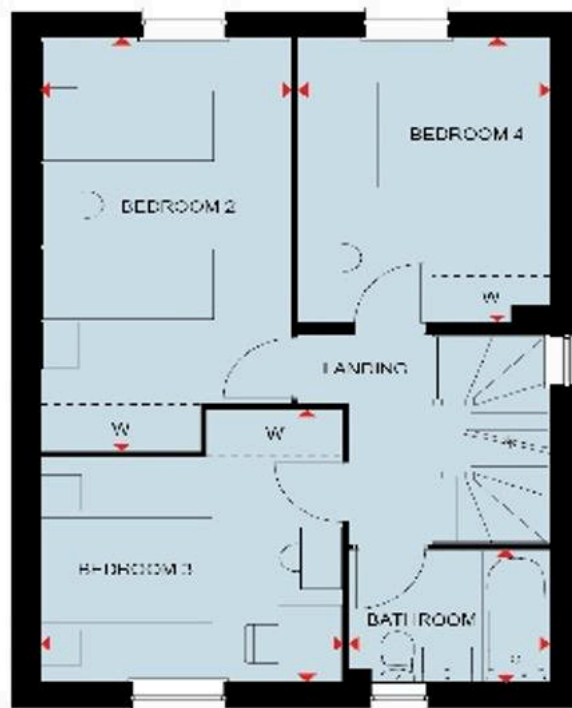
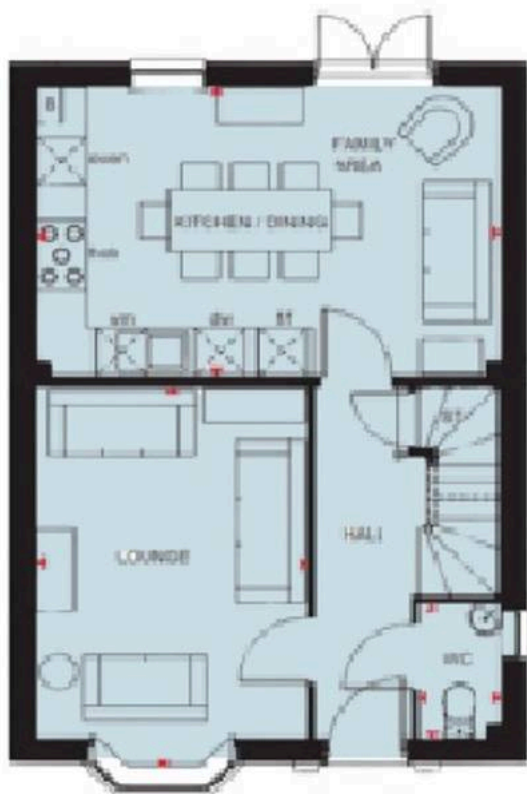
Grove is a large village conveniently located just outside the popular market town of Wantage in the heart of the Vale of White Horse. The village enjoys a wide range of local amenities suitable for everyday needs. There are excellent transport links offering easy access to Wantage (c.1.5miles), Faringdon (c.10 miles), Oxford (c.15 miles), A34 and A420. Local schooling includes both Millbrook and Grove Church of England primary schools. St Alfred's is the local secondary school and is located in Wantage. Didcot Parkway railway station with fast links to London Paddington (37 minutes) is located just 9 miles away.

Council Tax band: TBD

Tenure: Freehold

- Beautiful Detached Town House
- Stunning Kitchen/Dining Room & Living Room With Feature Bay Window
- All Four Double Bedrooms
- Impressive Master Suite With Dressing Area & Ensuite
- Garage & Driveway Directly To The Side of The Home
- No Onward Chain - Viewing Highly Advised!
- Energy Efficient Home - Solar Panels & Electric Car Charging Point





Waymark Wantage

Waymark Property, 23 Wallingford Street, Wantage – OX12 8AU

01235 645 645

wantage@waymarkproperty.co.uk

<http://www.waymarkproperty.co.uk>

Important Notice: These particulars have been prepared for prospective purchasers for guidance only. They do not form part of an offer or contract. Whilst some descriptions are obviously subjective and information is given in good faith, they should not be relied upon as statements or representative of fact. Floorplan – Whilst every attempt has been made to ensure the accuracy of this floorplan, measurements of doors, windows, rooms and any other items are approximate and no responsibility is taken for an error, omission or mis-statement. This plan is for illustrative purposes only and should be used as such by any prospective purchaser.