

# EVANS BROS.

QUALIFIED ESTATE AGENTS, VALUERS & AUCTIONEERS

Established in 1895

[www.evansbros.co.uk](http://www.evansbros.co.uk)

 OnTheMarket.com

1 MARKET STREET, ABERAERON, CEREDIGION, SA46 0AS

Tel: (01545) 570462 E-mail: [aberaeron@evansbros.co.uk](mailto:aberaeron@evansbros.co.uk)



## The Whispers, 3 Cwmhalen, New Quay, SA45 9SF

**Asking Price £280,000**

**\*\* CHAIN FREE\*\***

Wake up to sea views and stroll to the beach - this beautifully refurbished 3 bed bungalow offers modern comfort, generous space & a prime coastal setting in New Quay.

Enviably located within walking distance of the sea, this tastefully refurbished bungalow combines modern comfort with stunning sea views. Offering 3 spacious bedrooms and 2 stylish bathrooms, it's ideal for families or as a peaceful seaside retreat. A bright and airy reception room with sea views welcomes you in, while the newly fitted kitchen features contemporary finishes for a sleek, modern feel.

Updated throughout, this home is designed for easy living, complete with oil-fired central heating and parking for two vehicles. Located on the edge of New Quay, you're just moments away from renowned sandy beaches and scenic coastal walks. Chain-free and ready to move into, this is a turnkey opportunity to enjoy relaxed coastal living at its best.

## Location



Nestled on the stunning Ceredigion coastline, New Quay is a picturesque seaside town renowned for its sandy beaches, vibrant harbour, and breath-taking views over Cardigan Bay. This charming coastal community offers a relaxed lifestyle with a range of local amenities including independent shops, cafes, restaurants, and a well-regarded primary school. Popular for sailing, dolphin spotting, and coastal walks along the Wales Coast Path, New Quay is both a tranquil retreat and a thriving holiday destination. With excellent road links to Aberaeron and Aberystwyth, it is an ideal location for those seeking a peaceful coastal home or an investment in a sought-after holiday hotspot.

## Description



The property has been thoughtfully refurbished to a high standard, creating a bright and contemporary home ready for immediate occupation. Situated on a large corner plot, the property benefits from direct sea views and a fantastic outside space; perfect for those looking for the alfresco lifestyle. The property also benefits from oil-fired central heating, a newly fitted contemporary kitchen and bathroom, new flooring and full redecoration throughout.

The property offers more particularly, the following accommodation:

### Entrance Porch

With tiled floor and double doors leading to:

### Entrance Hallway

26'7 x 5'11 (8.10m x 1.80m)



Accessed via glass panel door with radiator and access to loft.

### Reception Room

16'4 x 12'7 (4.98m x 3.84m)



A particularly attractive feature of this property with large windows allowing natural light to flood the space while framing views towards the coastline. With modern electric fire and radiator.

This flows seamlessly into a dining area, creating an ideal layout for both everyday living and entertaining.

### Dining Area

8'6 x 8'5 (2.59m x 2.57m)



With radiator and window to rear.

### Kitchen

8'10 x 7'10 (2.69m x 2.39m)



The kitchen has been newly fitted with a stylish range of modern units, complemented by quality work surfaces and integrated appliances, offering a practical and attractive workspace. With base and wall units incorporating single drainer sink unit with mixer tap, fitted oven with induction hob and extractor hood over, plumbing automatic washing machine with large front window and radiator.

### Utility

7'9 x 6'11 (2.36m x 2.11m)



A useful space with external door to small decked area - perfect for enjoying the evening sunsets.

### Bedroom 1

12'7 x 11'2 (3.84m x 3.40m)



A large double bedroom with radiator and picture window having sea views. Benefitting from an ensuite.

### Ensuite Shower Room



Recently renovated with tiled walls and flooring, enclosed shower cubicle, W.C., vanity unit having wash handbasin and heated towel rail.

### Bedroom 2

12'6 x 8'10 (3.81m x 2.69m)



A double bedroom with radiator and window to front.

### Bedroom 3

8'10 x 7'9 (2.69m x 2.36m)



A double bedroom with radiator and window to front having lovely sea views.

### Bathroom

7'9 x 7'3 (2.36m x 2.21m)



A lovely, light room having enclosed corner shower unit, W.C. and wash handbasin combined in a useful vanity unit with heated towel rail, tiled walls and floors and window to front.

### Boiler Room

Externally accessed through double doors to front and housing the oil-fired central heating boiler.

### Externally



A feature of this property is the lovely corner plot location having extensive gardens to the front and rear of the property. To the front, there is private off-road parking and a lawned garden, while pathways lead around to further garden areas, also laid to lawn - ideal for families, gardening enthusiasts, or simply enjoying the coastal surroundings. The property also benefits from an attached garage which has since been converted into separate rooms for storage.

### Storage Room

10'4 x 9'6 (3.15m x 2.90m)



Recently converted from the garage to provide storage areas with external door, side window and electricity connected. This leads to a separate storage room which houses the oil tank with the original up-and-over door for the garage.

### Services

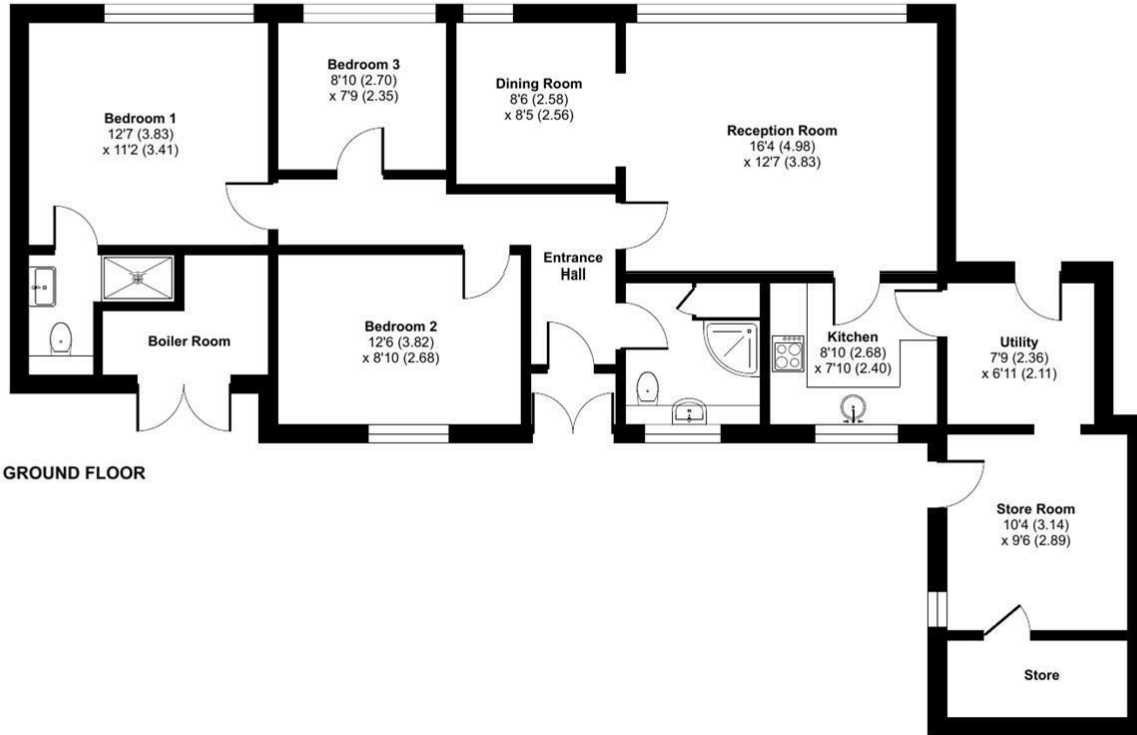
We are informed that the property benefits from connection to mains water, mains electricity and mains drainage with oil-fired central heating.

### Council Tax Band D

# Cwmhalen, New Quay, SA45

Approximate Area = 1165 sq ft / 108.1 sq m

For identification only - Not to scale



GROUND FLOOR

Floor plan produced in accordance with RICS Property Measurement 2nd Edition, Incorporating International Property Measurement Standards (IPMS2 Residential). © nχchecom 2026. Produced for Evans Bros Ltd. REF: 1451468



Energy Efficiency Rating		
	Current	Potential
Very energy efficient - lower running costs		
(92 plus) <b>A</b>		
(81-91) <b>B</b>		
(69-80) <b>C</b>		80
(55-68) <b>D</b>		
(39-54) <b>E</b>	42	
(21-38) <b>F</b>		
(1-20) <b>G</b>		
Not energy efficient - higher running costs		
<b>England &amp; Wales</b> EU Directive 2002/91/EC		
Environmental Impact (CO <sub>2</sub> ) Rating		
	Current	Potential
Very environmentally friendly - lower CO <sub>2</sub> emissions		
(92 plus) <b>A</b>		
(81-91) <b>B</b>		
(69-80) <b>C</b>		
(55-68) <b>D</b>		
(39-54) <b>E</b>		
(21-38) <b>F</b>		
(1-20) <b>G</b>		
Not environmentally friendly - higher CO <sub>2</sub> emissions		
<b>England &amp; Wales</b> EU Directive 2002/91/EC		



**39 HIGH STREET, LAMPETER, CEREDIGION, SA48 7BB**  
Tel: (01570) 422395

**MART OFFICE, LLANYBYDDER, CARMARTHENSHIRE, SA40 9UE**  
Tel: (01570) 480444

**5 NOTT SQUARE, CARMARTHEN, CARMARTHENSHIRE, SA31 1PG**  
Tel: (01267) 236611

Evans Bros (Aberaeron) Limited, Registered in Cardiff No. 09298450, Directors Mr E.J. Cambell Evans M.R.I.C.S., Mr Mark R. Evans M.R.I.C.S.