

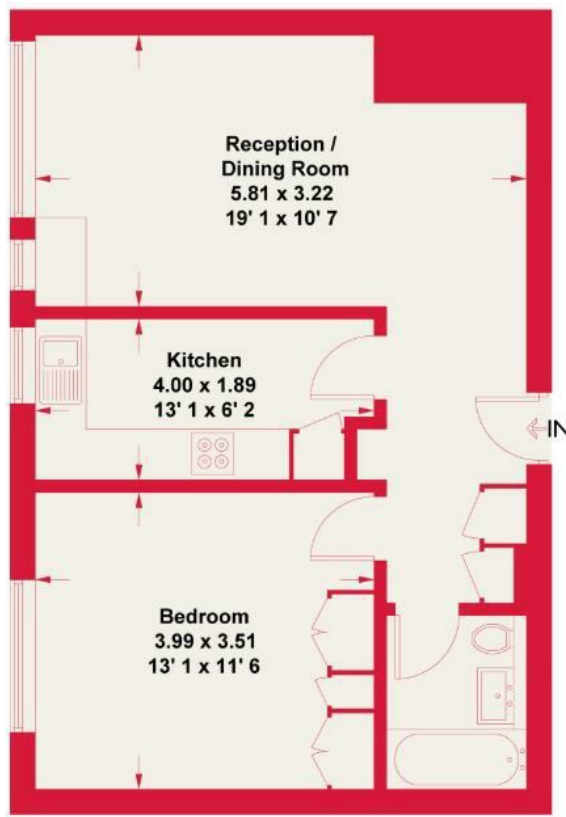
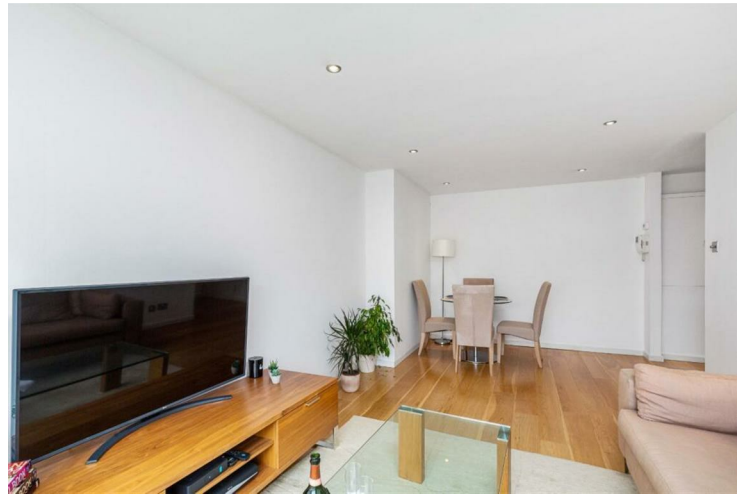
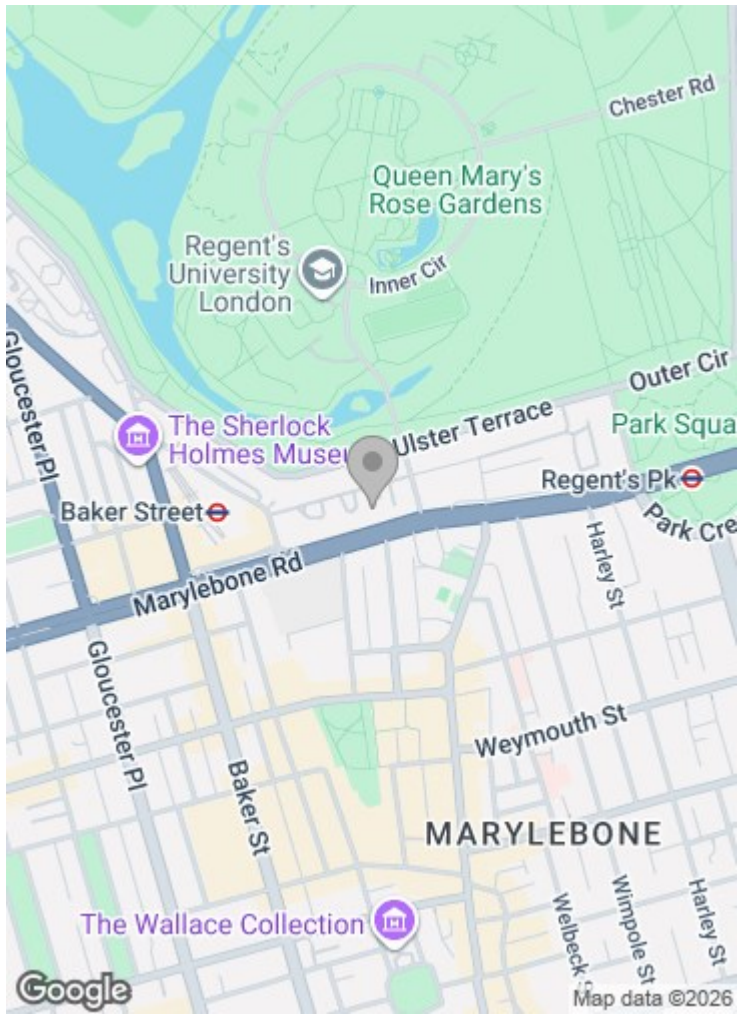


**Nottingham Terrace
London NW1 4QD**

£807 per week

A beautifully presented one bedroom apartment set in a popular portered block and benefiting from an abundance of natural light owing to it's west facing exposure. This home includes a spacious reception room with floor-to-ceiling windows, a fully equipped contemporary kitchen, a large double bedroom, and a modern bathroom suite. Spanning just over 550 square feet, the property further benefits from built in storage, wooden floors to the reception room and is tastefully furnished.

Nottingham Terrace benefits from 24 hour porter, passenger lift to all floors and close proximity to the open spaces of Regent's Park, and is within easy reach of the transport links of Baker Street and boutiques and restaurants of Marylebone High Street.



Fifth Floor

Important notice: These particulars are issued for guidance only. They are intended to give a fair overall description of the property and do not constitute a warranty of any kind or to be an offer or contract in whole or in part. Nothing in these particular shall be deemed to constitute a representation that the property is in good structural condition nor that any services, appliances, equipment or facilities are in good working order. Notwithstanding that all information contained in these particulars, both in the text and in any plans and photographs is given in good faith, intending purchasers should make their own enquiries as to the accuracy of all matters upon which they intend to rely. Measurements are given for guidance only.

85 - 87 BAYHAM STREET
LONDON NW1 0AG

45 CIRCUS ROAD
LONDON NW8 9JH

T: +44 0207 1234 152
info@phillipsharrod.com

Energy Efficiency Rating	Environment Impact (CO ₂) Rating
England & Wales	England & Wales