

*Symonds  
Taylor*



**20 Crossway, Jesmond**

Newcastle Upon Tyne

Offers Over **£695,000**



## 20 Crossway

Jesmond, Newcastle Upon Tyne

This semi detached period family home is located in the heart of Jesmond on a sought after street with generous and versatile accommodation that has been renovated and improved by the present owners and which will have both regional and national appeal.

### Accommodation comprises:

**Ground floor:** Entrance hallway, cloakroom/wc, sitting room, open plan family room/dining kitchen.

**First floor:** Landing, principal bedroom, bedroom 2, bedroom 3, bedroom 4, family bathroom.

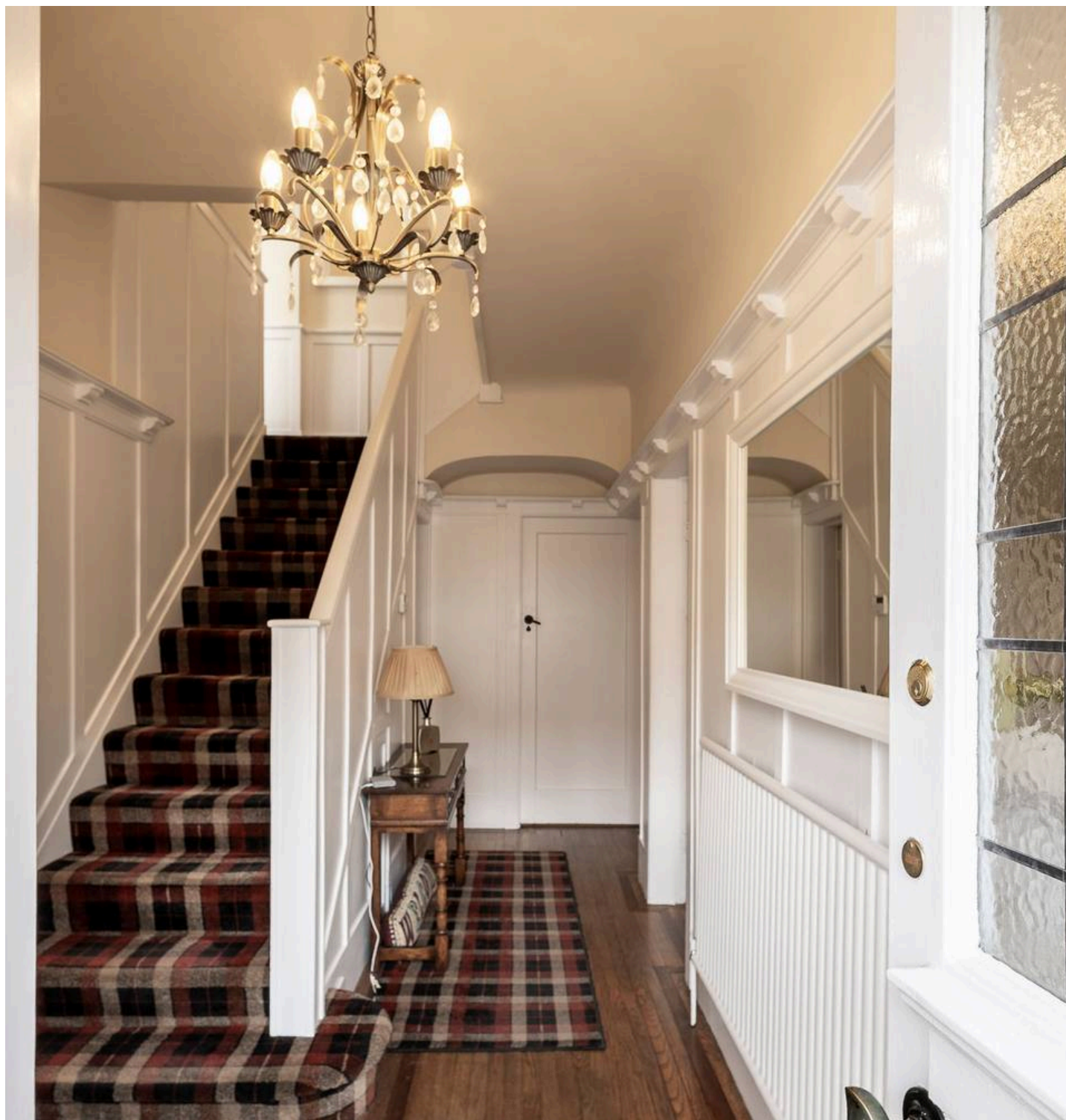
**Outside:** Front town garden, double driveway, off street parking, single garage, rear south facing lawn garden.

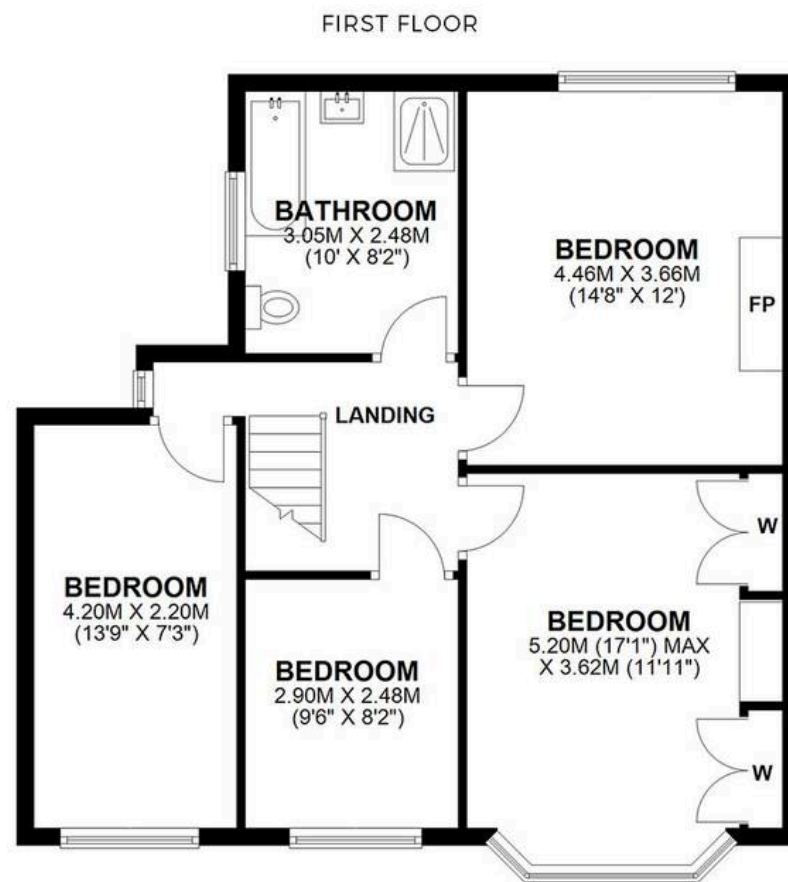
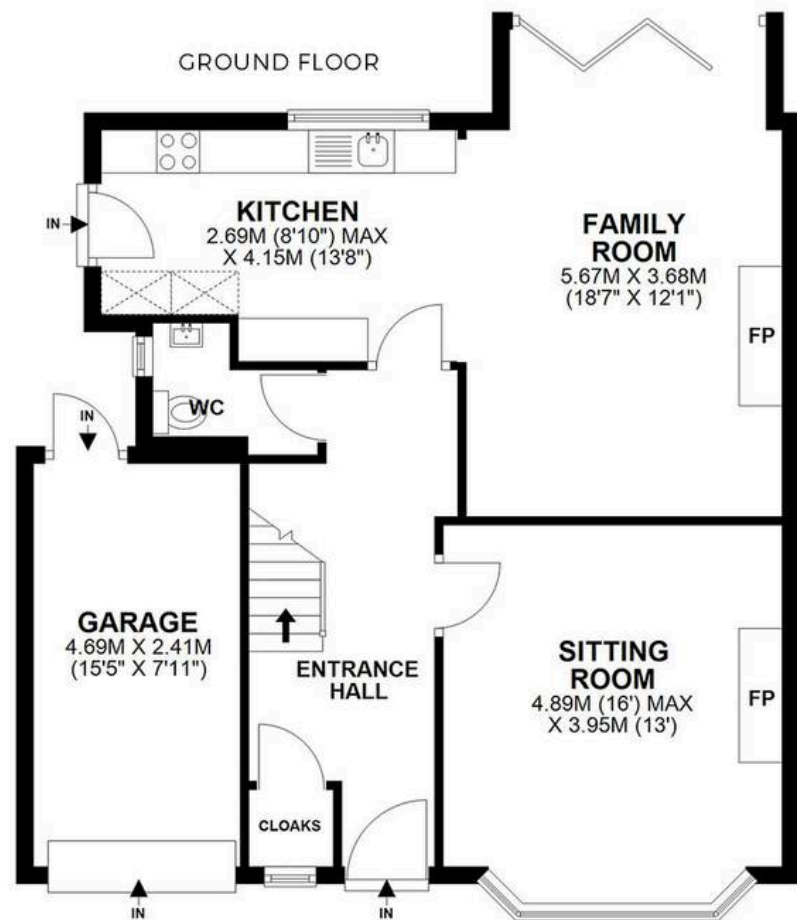
Council Tax band: E

Tenure: Freehold

EPC Energy Efficiency Rating: D

EPC Environmental Impact Rating: D





**20 CROSSWAY, JESMOND, NE2 3QH**

APPROXIMATE GROSS INTERNAL AREA 139 SQ M 1494 SQ FT - NOT TO SCALE - FOR ILLUSTRATIVE PURPOSES ONLY  
All measurements and fixtures including doors and windows are approximate and should be independently verified.





## Symonds Taylor

101 St. Georges Terrace, Jesmond - NE2 2DN

0191 338 9999 • [hello@symondstaylor.co.uk](mailto:hello@symondstaylor.co.uk) • [www.symondstaylor.co.uk](http://www.symondstaylor.co.uk)

All descriptions, plans or references to condition are given in good faith only. Whilst every endeavour is made to ensure accuracy, please check with us on any points of especial importance to you.