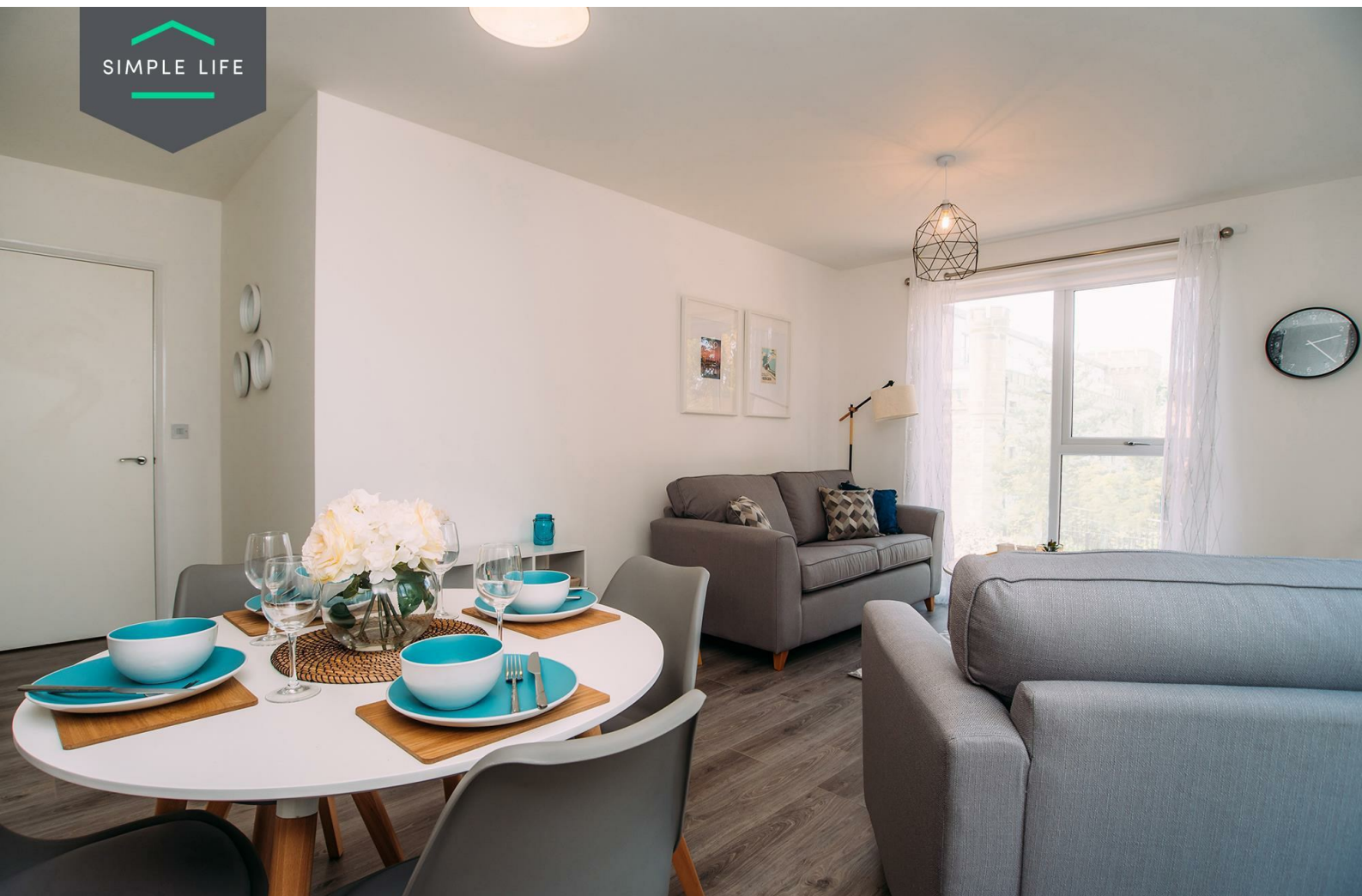




SIMPLE LIFE



SIMPLE LIFE



## Park Grange House, Sheffield, S2

£1,050 PCM

Welcome to Simple Life's Park Grange House apartments. Located within 1 mile of Sheffield city centre, enjoy living with the flexibility and freedom these stylish modern apartments can offer, in a newly rejuvenated area, close to multiple transport links.

The Ash has so much to offer, with a large, expansive living/dining room linked to a modern kitchen. Integrated kitchen appliances and lots of storage space give you plenty of room to live and entertain.

Also benefiting from a contemporary bathroom and two double bedrooms, the Ash is the perfect space for friends sharing, couples and young families.

Deposit £1210  
Holding Deposit £240  
Council Tax A  
Unfurnished  
Available 23rd February 2026





## Key Features

- Allocated parking space
- Dishwasher
- Washing/drying machine
- Modern, white kitchen units
- Light grey carpets in the bedrooms
- Fitted wardrobes to master bedroom
- Fridge freezer
- Oven and hob
- Light wash wood effect flooring
- White blinds to all bedrooms, living and bathroom

## Location

