



Luscombe Maye
Since 1873

Kingsbridge, TQ7 2DN

Guide Price £900,000

🛏 4 🚿 3 🛋 4



- Charming Detached Cottage
- Stunning Front Gardens
- Four Bedrooms
- Three Bathrooms
- Extensive Rear Garden
- Separate Two Acres Of Land
- Open Plan Living Areas



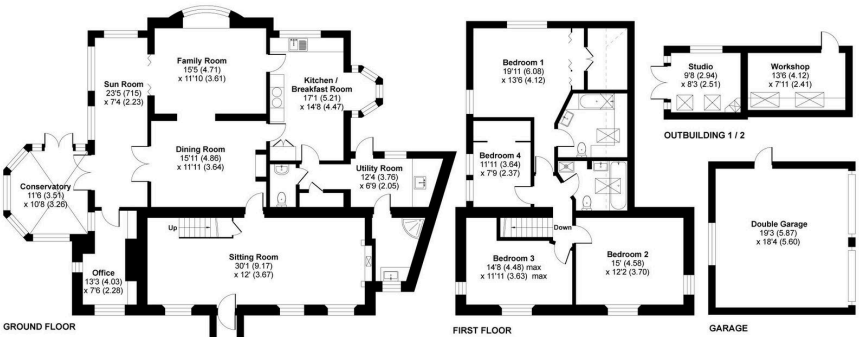
Charming Detached Cottage | Stunning Front Gardens | Four Bedrooms | Three Bathrooms | Extensive Rear Garden | Separate Two Acres Of Land |



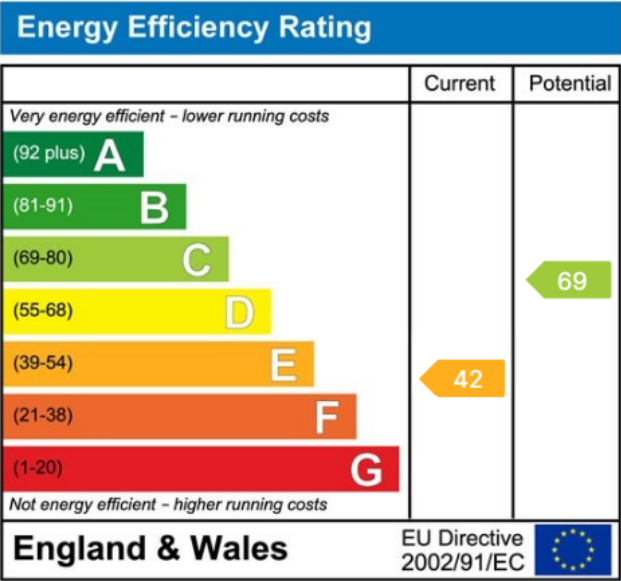
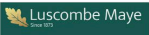
Denotes restricted
head height

Kingsbridge, TQ7

Approximate Area = 2514 sq ft / 233.5 sq m
Limited Use Area(s) = 77 sq ft / 7.1 sq m
Garage = 354 sq ft / 32.8 sq m
Outbuildings = 186 sq ft / 17.2 sq m
Total = 3131 sq ft / 290.6 sq m
For identification only - Not to scale



Floor plan produced in accordance with RICS Property Measurement 2nd Edition, incorporating International Property Measurement Standards (IPMS2 Residential). © richcom 2025. Produced for Luscombe Maye. REF: 1309467



Kingsbridge:
62 Fore Street, Kingsbridge TQ7 1PP
01548 857474
kingsbridge@luscombemaye.com
www.luscombemaye.com

Important Notice: Luscombe Maye gives notice that: 1. These particulars do not constitute an offer or contract or part thereof. 2. All descriptions, photographs and plans are for guidance only and should not be relied upon as statements or representations of fact. All measurements are approximate and not necessarily to scale. Any prospective purchaser must satisfy themselves of the correctness of the information within the particulars by inspection or otherwise. 3. Luscombe Maye does not have any authority to give any representations or warranties whatsoever in relation to this property (including but not limited to planning/building regulations), nor can it enter into any contract on behalf of the Vendor.