



Cumberland Mills Square, E14

£496 Per week

A direct river facing two bedroom on the first floor of this secure gated development. This apartment has a separate kitchen, built in storage, nest controlled heating and garage parking.

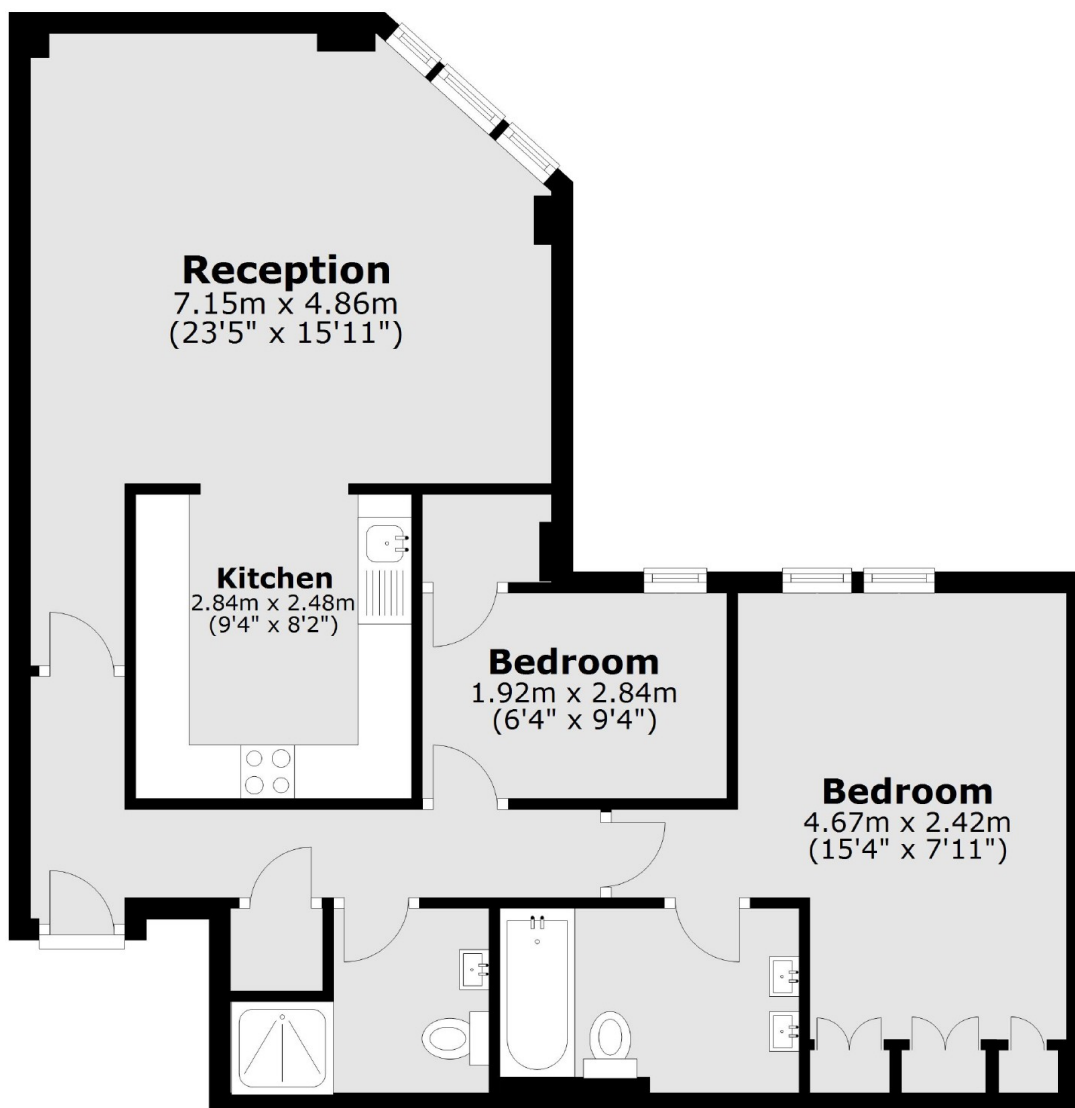
Cumberland Mills is a quiet residential development moments from Island Garland DLR, the historic Watermans Arms Gastropub and Mudchute Park.

Features

- Two Bedrooms
- Two Bathrooms
- Direct River Views
- Gated Development
- Parking
- Porter

Cumberland Mills Square, London, E14

First Floor



Total area: approx. 66.9 sq. metres (720.0 sq. feet)