



Loxwood Radnor Cliff Crescent, Folkestone - CT20 2JG

Prices From **£725,000**

Approximate Gross Internal Area (Including Low Ceiling) = 178 sq m / 1914 sq ft
Garage = 18 sq m / 197 sq ft

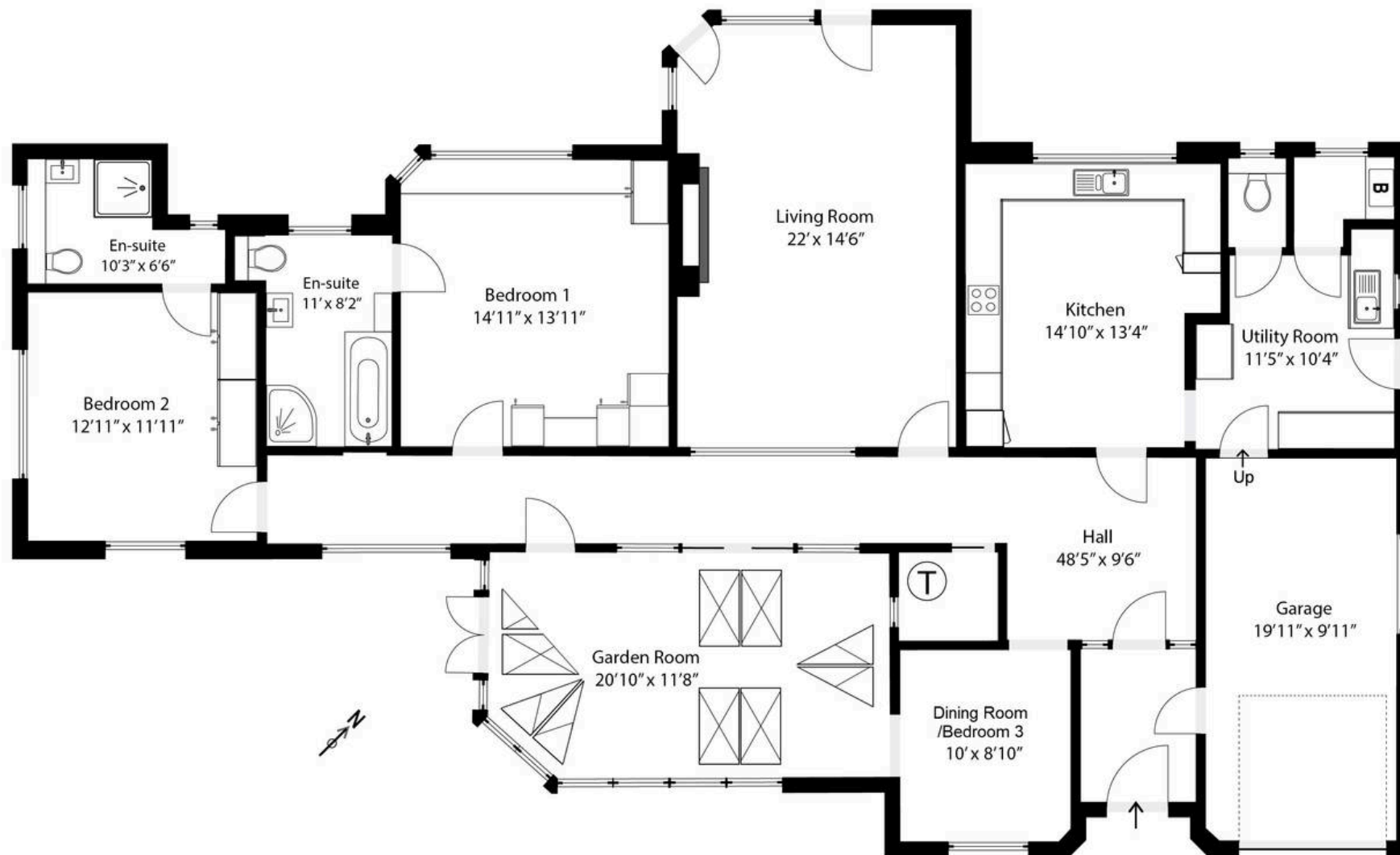


Illustration for Identification purposes only. Measurements are approximate. Dimensions given are between the widest points.
Not to scale. Outbuildings are not shown in actual location.

© Unauthorised reproduction prohibited - chriskemps@hotmail.com



Loxwood Radnor Cliff Crescent

Folkestone, Folkestone

Price Range from £725,000 – £750,000. A beautifully renovated two-bedroom detached bungalow with superb views of the English Channel. Thoughtfully redesigned by the current owners, this exceptional home blends contemporary style with comfort and practicality. The spacious layout includes a welcoming porch, a bright entrance hall, and a stylish living room with contemporary gas fire, enhanced by a striking glass partition. The sleek, modern kitchen is complemented by a separate utility room, while both generous double bedrooms feature en-suite facilities. Additional highlights include a charming garden room, dining room/bedroom three, a separate cloakroom/WC and an integral garage. Surrounded by a wraparound garden, the property also benefits from PV solar panels and a private driveway. Planning permission is in place for a second-floor extension and further expansion.

Council Tax band: G

Tenure: Freehold

EPC Energy Efficiency Rating: C

EPC Environmental Impact Rating: D











Laing Bennett

Laing Bennett Ltd, The Estate Office, 8 Station Road – CT18 8HP

01303 863393 • info@laingbennett.co.uk • www.laingbennett.co.uk/

DISCLAIMER – These details are for guidance only and do not form part of an offer or contract. Measurements are approximate. Laing Bennett Ltd and the Vendor/Landlord accept no liability. Services and appliances are untested. Applicants must make their own checks. Items shown may not be included. No staff have authority to give warranties.