

OVER 60?

Secure this property
for up to **59% less!**



Guide Price

£300,000

Leasehold

2x  2x  1x 

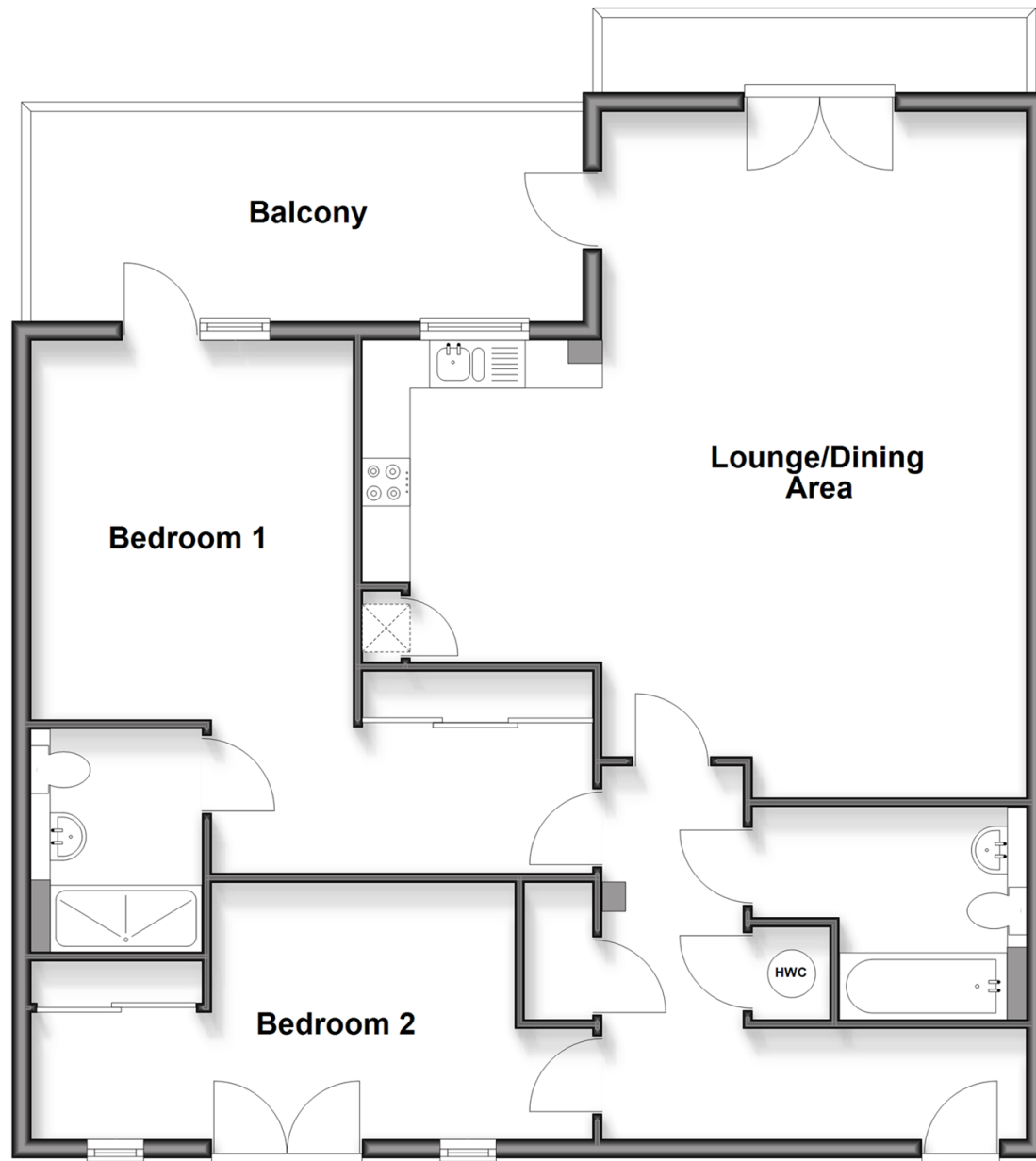
Malin House, Rivermead, St. Mary's Island,
Chatham, Kent, ME4

Wards

Helping you move forwards

First Floor

Approx. 97.9 sq. metres (1053.8 sq. feet)



Accommodation

FIRST FLOOR

Entrance Hallway

Lounge/Dining Area: 23'5 x 14'0 (7.14m x 4.27m)

Terrace

Balcony

Kitchen Area: 10'8 x 8'7 (3.25m x 2.62m)

Bedroom 1

Sleeping Area: 13'6 x 10'10 (4.12m x 3.30m)

Dressing Area: 8'4 x 7'0 (2.54m x 2.14m)

En-suite Shower Room

Bedroom 2: 19'3 x 8'8 (5.87m x 2.64m)

Bathroom

OUTSIDE

2 x Allocated Parking Spaces



Main features

- Modern first floor executive apartment with 2 allocated parking spaces
- Spacious terrace and additional balcony with beautiful river views
- Large, open plan versatile living space
- Perfect for a professional couple or someone looking to downsize, with lift access
- Prime position in a sought after location on St Mary's Island



Nearest Schools

Primary Schools: St Mary's Island C of E (Aided) Primary 0.4 miles, Burnt Oak Primary 1.0 miles

Secondary Schools: St John Fisher 2.2 miles, Brompton Academy 2.4 miles, Victory Academy 2.5 miles



Transport Information

Train Stations: Gillingham 1.4 miles, Strood 2.2 miles, Chatham 2.2 miles



Address

Malin House, Rivermead, St. Mary's Island, Chatham, Kent, ME4



Directions

For directions to this property please contact us.



Wards
Helping you move forwards

Call Chatham Branch 01634 841243 ■ wardsofkent.co.uk



- Legal advice should be taken to verify fixtures/fittings, planning, alterations and/or lease details
- Appliances & services are untested, dimensions are approximate and floor plans are not to scale
- Through a Homewise Home For Life Plan people aged 60+ can secure this property for up to 50% less, by purchasing a Lifetime Lease.

EPC RATING

CURRENT:	POTENTIAL:
B(31)	B(31)

10435880/20251002/BC/BC