



The Terrace

Rochester | ME1 1XN

The Terrace

, Rochester, ME1 1XN

A beautifully presented four bedroom Grade II listed Townhouse set across four floors, seamlessly blending period charm and contemporary comfort.

Built in 1848, this characterful home retains original architectural details whilst offering modern living throughout. The spacious layout includes four generous double bedrooms, a stylish lounge, and open plan kitchen-diner - perfect for entertaining and daily family life. A well-appointed family bathroom and separate WC ensures practicality, while a small utility space adds convenience.

Outside, a private rear courtyard garden provides a quiet retreat, ideal for relaxing or al fresco dining.

Situated a short walk from the historic town of Rochester, with its charming High Street, iconic castle and cathedral, this home is perfectly located for both families and professionals. Kings School and St. Augustine's are both within easy walking distance, and excellent transport links, including high-speed rail services provide fast and direct access to London and the South East Coast.

£550,000



Entrance Hall

Bedroom

11'10 x 11'8 (3.61m x 3.56m)

Bedroom

11'11 x 9'4 (3.63m x 2.84m)

Sitting Room

14'7 x 11'8 (4.45m x 3.56m)

Bathroom

12'1 x 9'4 (3.68m x 2.84m)

Bedroom

14'7 x 11'8 (4.45m x 3.56m)

Bedroom

12'1 x 9'4 (3.68m x 2.84m)

Kitchen

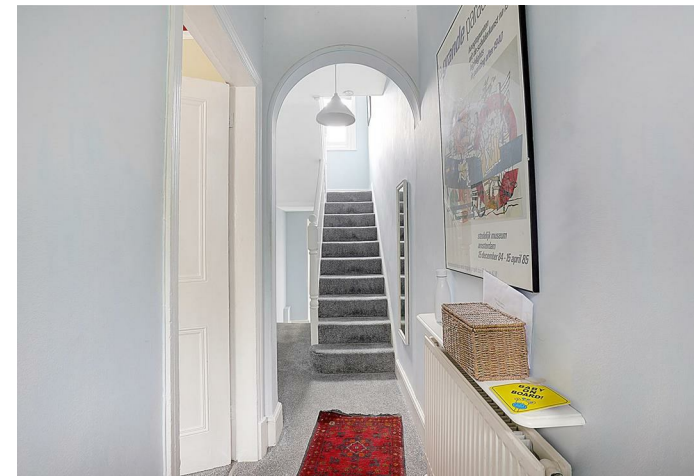
12'2 x 9'4 (3.71m x 2.84m)

Dining Room

14'7 x 11'7 (4.45m x 3.53m)

Utility Room

Cellar





REAL ESTATE

ESTATE AGENCY : REDEFINED

18 - 20 High Street

Gillingham

Kent

ME7 1BB

01634 570057

www.crralestate.co.uk

twitter.com/CRRealEstateUK

facebook.com/CRRealEstateUK



rightmove
find your happy



CR Real Estate endeavour to maintain accurate depictions of properties in Virtual Tours, Floor Plans and descriptions, however, these are intended only as a guide and purchasers must satisfy themselves by personal inspection.