



Castlehaven Road, NW1 8SJ

London

£2,250 pcm

DAVID GREENSLADE
exp



Deposit: £2,596.15

Date First Available: 04/07/2026

Furnishing: Unfurnished

Located on the highly sought-after Castlehaven Road, NW1, is this well presented one bedroom first floor flat.

Offering a bright and inviting living room, ideal for entertaining or unwinding. The separate kitchen comes fully equipped with modern appliances including a washing machine and a dishwasher, and benefits from a small private balcony. The spacious double bedroom serves as a quiet, comfortable retreat at the end of the day.

The Best of North London on Your Doorstep: Living here means you are perfectly positioned between the electric energy of Camden, the neighbourhood charm of Kentish Town, and the tranquility of London's finest royal parks.

3 Minutes to Kentish Town High Street: Turn right and you are immediately in a vibrant hub of artisan independent coffee shops, local gyms, and bakeries. Grab your morning coffee and a pastry at The Fields Beneath right by the station, or enjoy an authentic Italian dinner at the critically acclaimed Anima e Cuore.

The Camden Vibe (Less than 10 mins walk): Turn left to immerse yourself in the heart of iconic Camden Town. Spend your weekends exploring Camden Market, grabbing artisan cheese from Pick & Cheese (the famous cheese conveyor belt), or enjoying a legendary Sunday roast at the historic The Hawley Arms or The Lock Tavern.

Acclaimed Local Pubs: You are spoiled for choice with award-winning local pubs. Tapping the Admiral (a hidden gem neighbourhood favourite) and the vibrant Abbey Tavern with its massive rooftop terrace and beer garden are both just minutes away.

Green Spaces: When you need a break from the bustle, you are within easy walking distance of both Hampstead Heath and Primrose Hill, offering incredible walking trails, swimming ponds, and some of the best panoramic skyline views in London.

Unbeatable Transport Links: Commuting and exploring the city could not be easier with three major stations practically on your doorstep:

Kentish Town West (Overground): Just a 4-minute walk, ideal for quick trips to East London or Richmond.

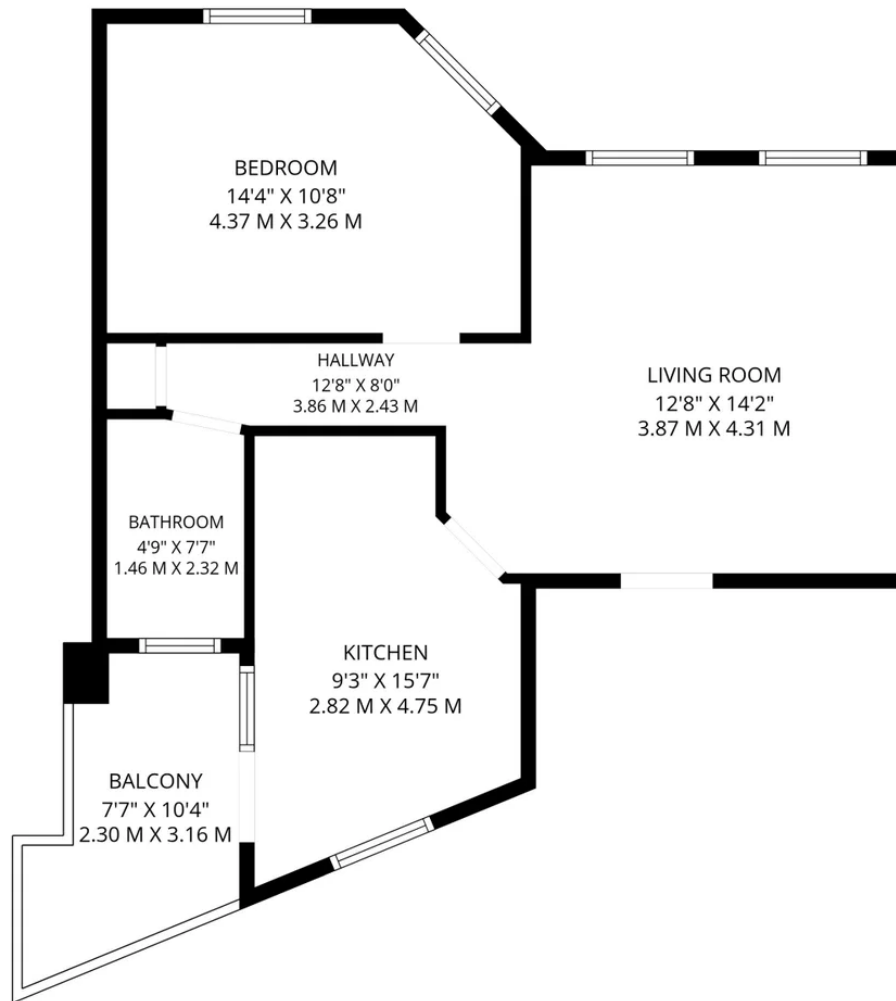
Kentish Town (Northern Line & Thameslink): Less than a 10-minute walk, offering direct 24-hour links through central London and straight to major airports.

Chalk Farm & Camden Town (Northern Line): Both under a 10-minute walk.









Total: 545 sq. Ft, 51 m2

Ground Floor: 545 sq. Ft, 51 m2

Excluded Areas: Balcony: 64 sq. Ft, 6 M2, Walls: 55 sq. Ft, 5 m2

FLOOR PLAN CREATED BY CUBICASA APP. MEASUREMENTS DEEMED HIGHLY RELIABLE BUT NOT GUARANTEED.



David Greenslade powered by eXp

Your Personal Estate Agent

02080 500 252

david.greenslade@expuk.com

<https://davidgreenslade.exp.uk.com>