

Lyttons Way, Hoddesdon, EN11 9NQ

Westwood Leber are delighted to bring to the market this impressive five-bedroom semi-detached family home, perfectly positioned in one of Hoddesdon's most sought-after residential locations.

This spacious property offers over 1,600 sq. ft. of well-presented accommodation, thoughtfully designed for modern family living. The ground floor features a welcoming entrance hallway, a generous lounge to the front, and an exceptional open-plan kitchen/breakfast/dining room spanning the rear of the home — ideal for entertaining and family gatherings. The layout is complemented by a useful utility room and an integral garage providing further storage and practicality.

To the first floor, the home offers five well-proportioned bedrooms, including a particularly large principal bedroom, along with a modern family bathroom and a convenient additional W.C., providing flexibility and comfort for growing families.

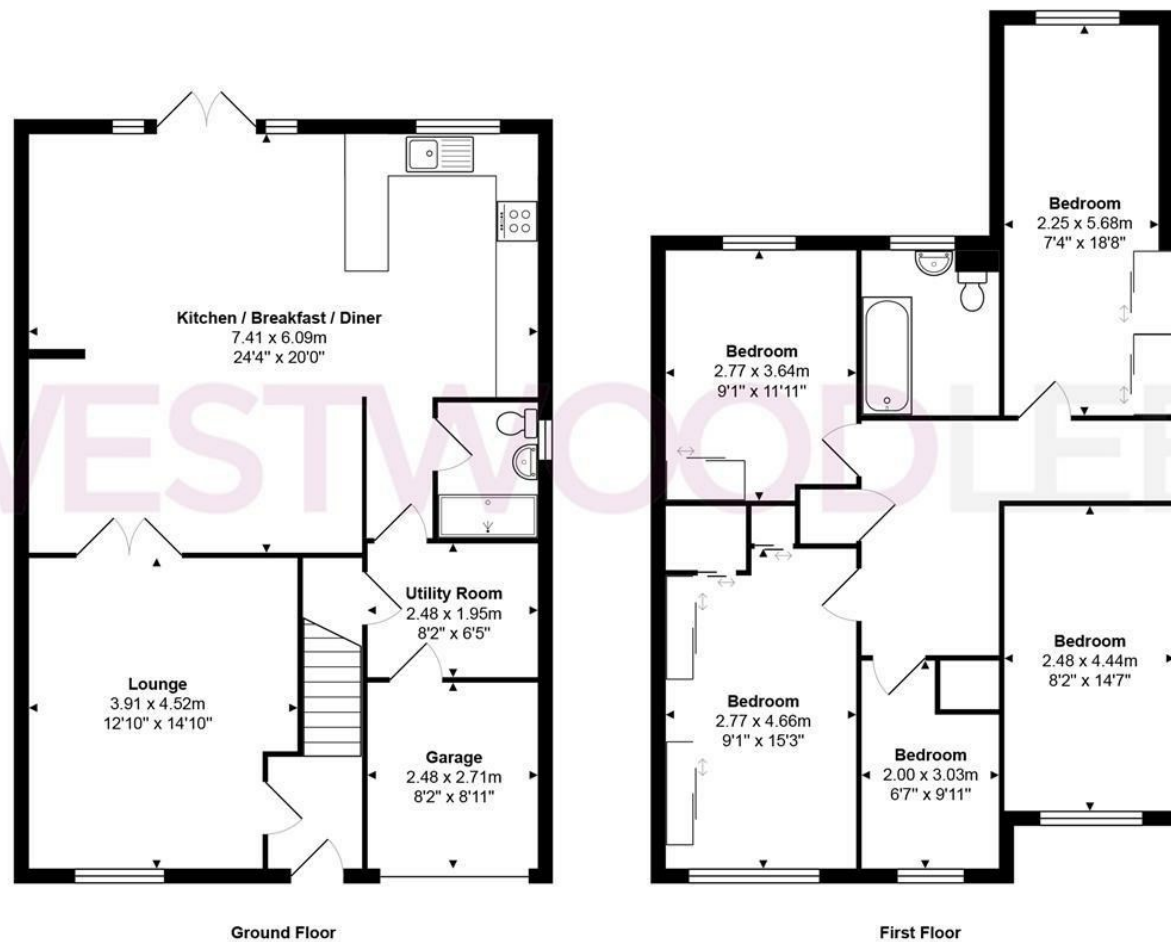
Externally, the property enjoys a private rear garden, perfect for outdoor dining and relaxation, while the front provides off-street parking and access to the garage.

Situated in a popular Hoddesdon location, Lyttons Way is within easy reach of highly regarded local schools, shops, and transport links, including Rye House and Broxbourne stations, offering direct connections into London Liverpool Street.

An early viewing is highly recommended to appreciate the size, layout, and quality of accommodation this superb family home has to offer.



WESTWOODLEBER



Total Area: approx. 151.2 m² ... 1628 ft²

THE FLOORPLAN IS FOR ILLUSTRATIVE PURPOSES ONLY AND IS NOT TO SCALE.
Measurements and features are approximate and may differ from the actual property. Verify all details independently; no liability is accepted for errors or omissions.

Property marketing provided by www.fotomarketing.co.uk









WESTWOODLEBER



WESTWOODLEBER



WESTWOODLEBER



WESTWOODLEBER





WESTWOODLEBER