



Shatterstone, East Hunsbury, Northampton



**£325,000**



## Key Features

- 4 Bedrooms
- Garage & Driveway
- Garden Space
- Popular Area
- EPC rating C





A lovely family home located in the popular area of East Hunsbury. A good space comprising of ground floor sitting room, dining room, fitted kitchen breakfast area, study, utility and cloakroom. To the first floor there are three double bedrooms and single room with family bathroom and shower over bath. Included is driveway & garage and plenty of private garden space.



A popular residential area with good OFSTED school options and great road connections via A45 and M1. Not to be missed!





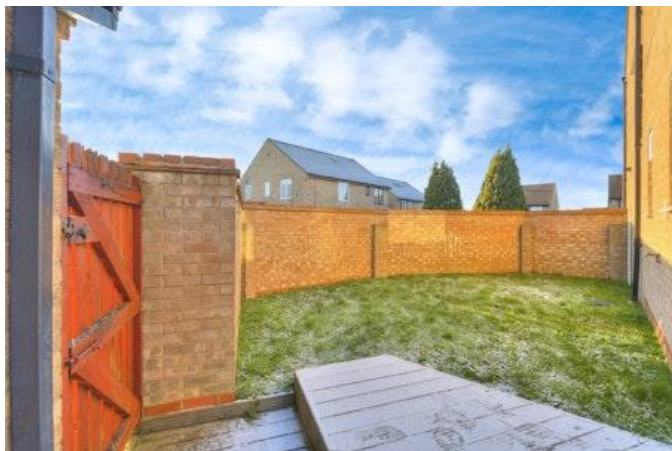


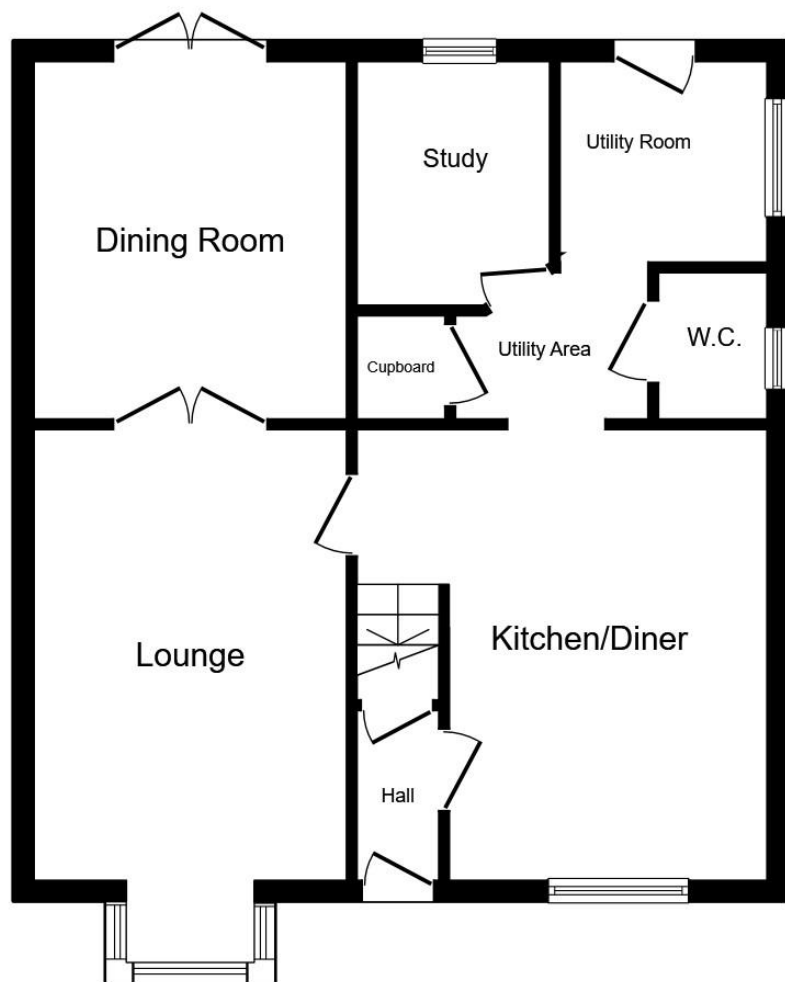




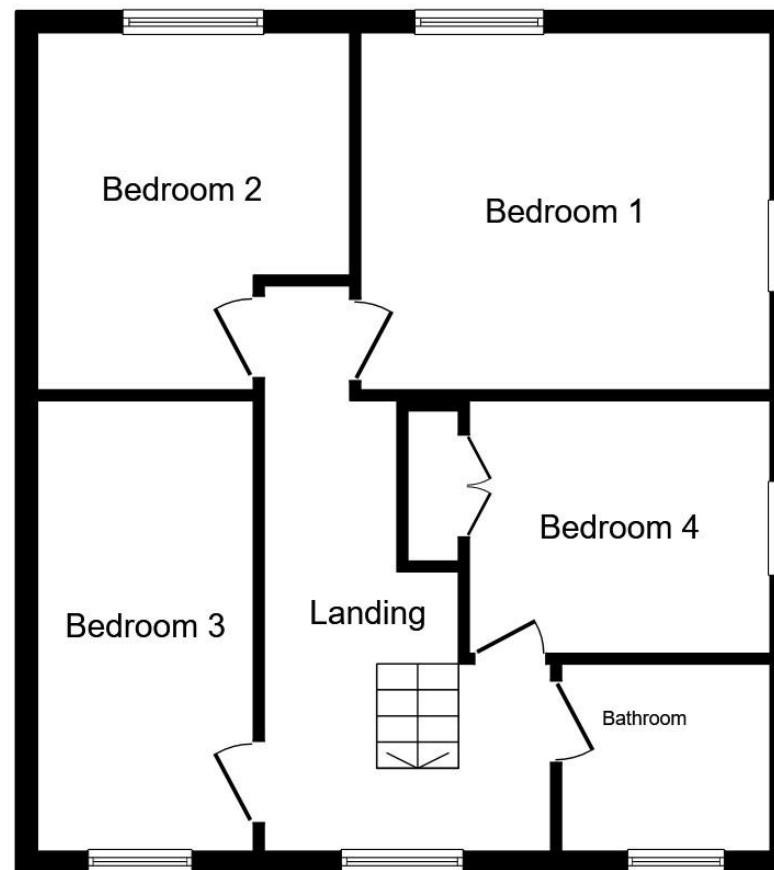








**Ground Floor**



**First Floor**

Total floor area 115.2 sq.m. (1,240 sq.ft.) approx

This floor plan is for illustrative purposes only. It is not drawn to scale. Any measurements, floor areas (including any total floor area), openings and orientation are approximate. No details are guaranteed, they cannot be relied upon for any purpose and they do not form part of any agreement. No liability is taken for any error, omission or misstatement. A party must rely upon its own inspection(s). Powered by [www.focalagent.com](http://www.focalagent.com)



