

HENDERSON CONNELLAN

ESTATE AGENTS



Beatrice Road, Kettering, NN16

"A Warm Welcome"

"A Warm Welcome"

This fabulous detached bungalow occupies a lovely plot in a convenient location, within walking distance of the town centre and a wealth of local amenities. Offering well-proportioned accommodation throughout, the property is entered via a porch leading into the entrance hall with useful storage cupboard. The accommodation comprises a bright dual-aspect living room with feature fireplace and the kitchen. There are also two double bedrooms and the family bathroom. Outside, the property enjoys a private block-paved driveway providing off-road parking for three to four cars. A particular feature of the home is the large rear garden, which has been designed with low maintenance in mind and offers multiple patio seating areas, gravelled sections and a small lawn, creating an excellent outdoor space to relax and entertain.

Living Room - 4.67m x 3.3m (15'4" x 10'10")

Kitchen - 4.72m x 3.43m (15'6" x 11'3")

Bedroom 1 - 4.32m x 3.73m (14'2" x 12'3")

Bedroom 2 - 3.94m x 2.82m (12'11" x 9'3")

Bathroom - 2.26m x 1.68m (7'5" x 5'6")

- Detached Bungalow
- Two Double Bedrooms
- Close to Local Amenities
- Offroad Parking for Three to Fours Cars
- Spacious Rear Garden
- Bright Living Room
- Gas Central Heating
- EPC RATING: PENDING
- COUNCIL TAX: C

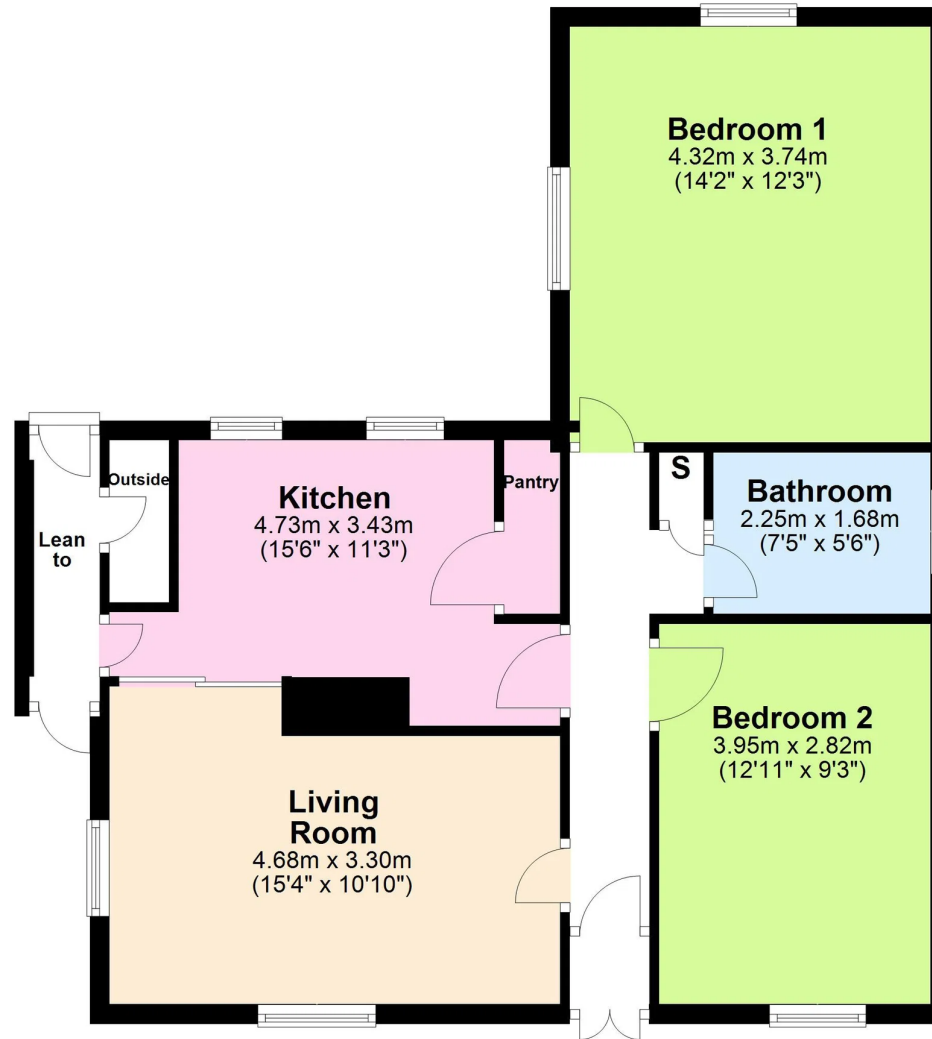
Tenure: Freehold





Ground Floor

Approx. 68.0 sq. metres (732.5 sq. feet)



Total area: approx. 68.0 sq. metres (732.5 sq. feet)



Henderson Connellan Kettering office 01536 417888 ketteringsales@hendersonconnellan.co.uk

Disclaimer: These particulars do not form part of any offer or contract and should not be relied upon as statements or representations of fact. Any areas, measurements of distances are approximate. The text, photographs and plans are for guidance only and are not necessarily comprehensive.

