

New Cavendish Street, W1W

£876 Per week

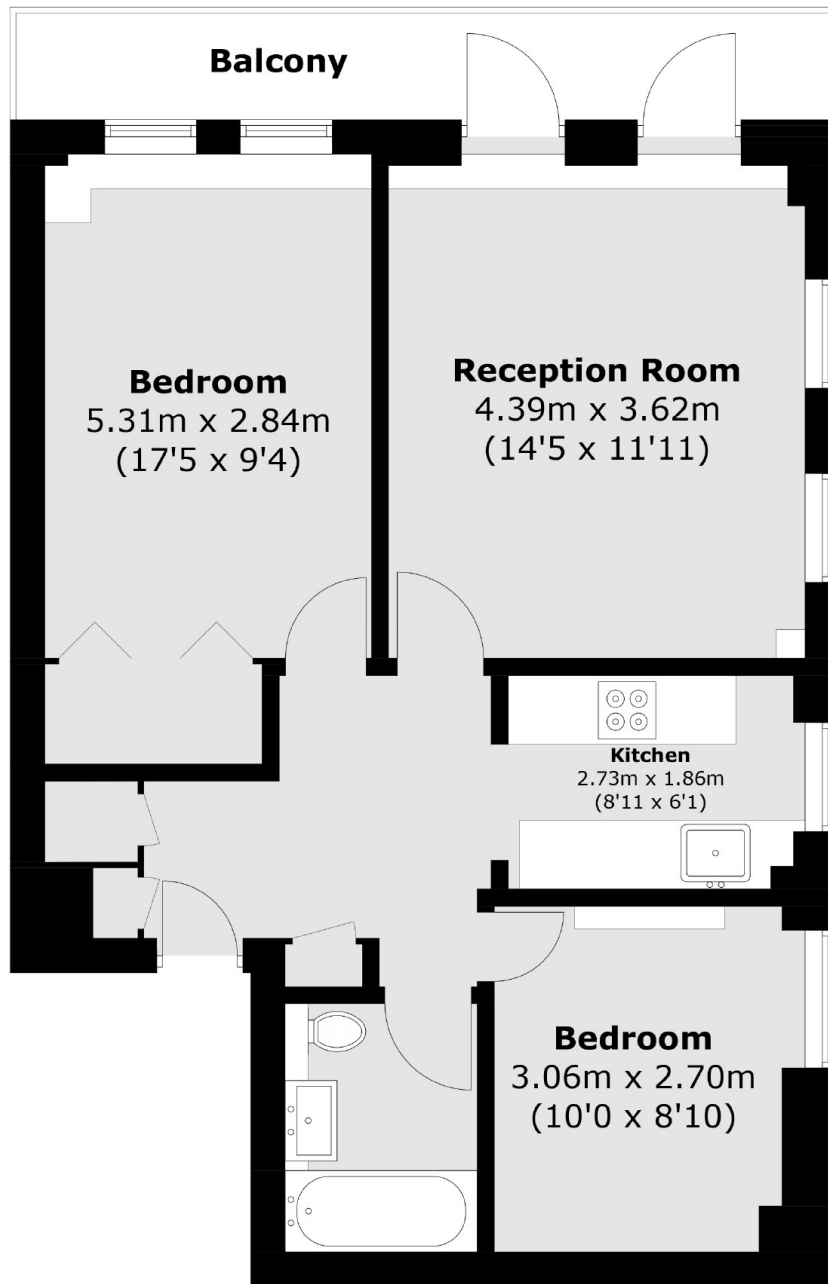
A two double bedroom apartment on the fifth floor with a terrace and views across London. The property has ample storage, lift access and is situated on New Cavendish Street in central Fitzrovia.

The property is centrally located in the heart of Fitzrovia and Oxford Street, Goodge Street and Regent Street are all within half a mile away from the property.

Features

- Large Terrace
- Hot Water/Heating Included
- Two Double Bedrooms
- Excellent Views
- Modern Kitchen
- Fifth Floor

New Cavendish Street, London, W1W



Total area (approx.): 56.7 sq. m (610.3 sq. ft)
Balcony: 6.6 sq. m (71.0 sq. ft)