



Atworth Village

£325,000

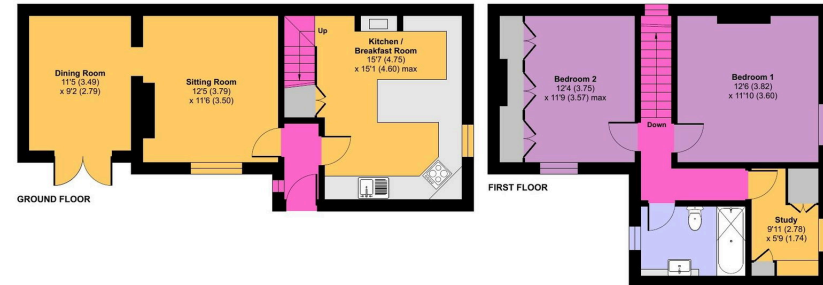
🛏️ 2 🚿 1 🚗 3

- Sought after location set back in a quiet corner
- Good size kitchen/breakfast room with fire place
- 2 double bedrooms plus 3rd room for study / nursery / hobby room
- Front garden area only, but place for seating and borders to enjoy
- Easy travel to Bath by car or bus
- Character features throughout including beams and fireplaces
- Sitting room with fireplace plus a dining room with french doors
- Driveway parking at front
- Surrounded by amenities - great local pub, play park, village hall
- Superb opportunity with NO ONWARD CHAIN!

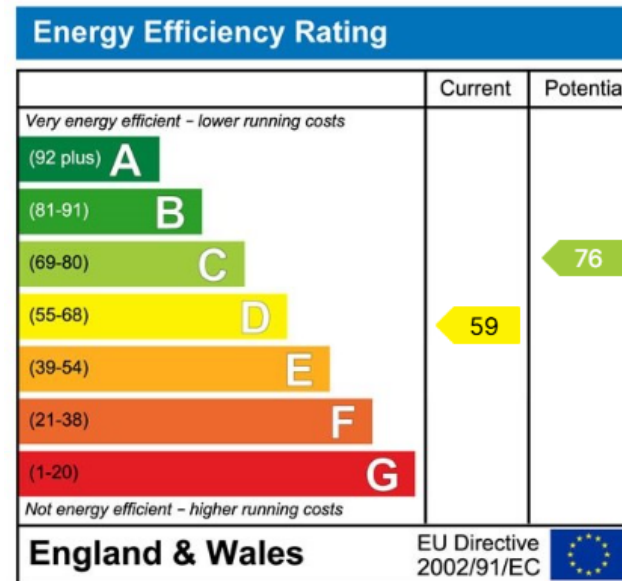


Not just a 2 bedroom cottage! This charming character home has a 3rd upstairs room , ideal as a study , both a sitting room and dining room along with a generous kitchen/breakfast room not often seen in a property of this age. Tucked away in a quiet corner, in the heart of Atworth village, with a small front garden area and parking and modernised sympathetically to this period home. NO ONWARD CHAIN!





ⓘ Floor plan produced in accordance with RICS Property Measurement 2nd Edition, incorporating International Property Measurement Standards (IPMS2 Residential). © richcom 2020. Produced for: Jane Whitfield Property Services. REF: 1418962



☎ 01225 705650

✉ hello@jainewhitfield.co.uk

🌐 www.jainewhitfield.co.uk

