



Moorfield Road

Salford



In Excess of £350,000

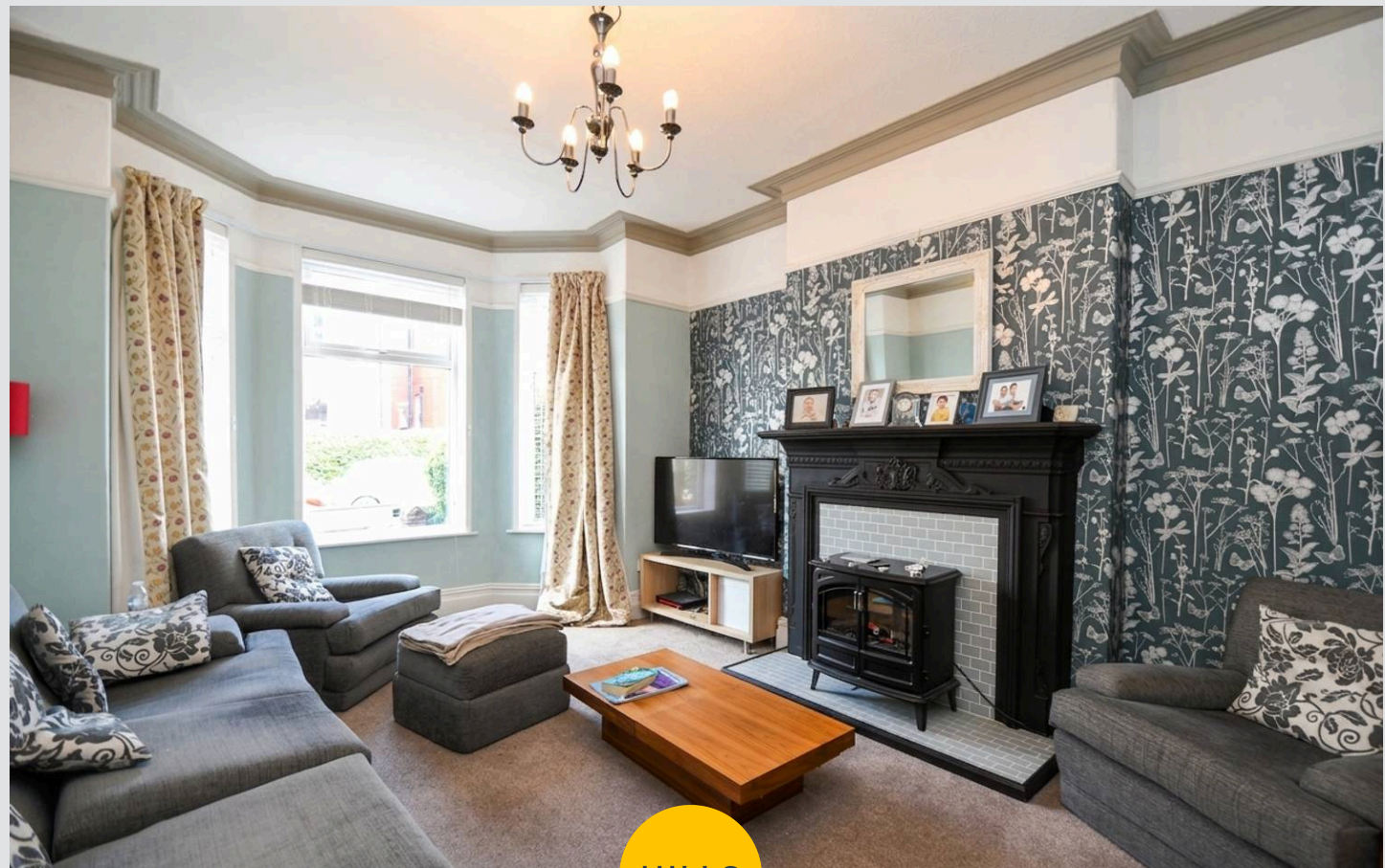
Moorfield Road

Salford

Spacious, period semi-detached property coming to the market CHAIN FREE! Located on the popular Irlam o'th ' Height and featuring a modern kitchen, stunning four piece bathroom suite and a loft room! Council Tax band: TBD

Tenure: Leasehold

- Period Three Bedroom Semi-Detached Property Coming to the market CHAIN FREE!
- Three generous sized bedrooms and a loft room, currently used as storage
- Stunning four piece bathroom suite
- Bay-Fronted Lounge and a Separate dining room
- Spacious modern fitted kitchen
- Stunning south facing low maintenance garden, complete with a brick built outbuilding
- Located in the Popular Irlam o' th' Height Area
- Close to Excellent Transport Links into Salford Quays, Media City and Manchester City Centre
- Early viewing is advised!
- Perfect first time buy or family home!



HILLS



Porch

2' 2" x 8' 0" (0.67m x 2.44m)

Entrance Hallway

14' 10" x 7' 11" (4.52m x 2.42m)

Lounge

17' 0" x 12' 11" (5.17m x 3.94m)

Dining Room

13' 0" x 15' 1" (3.97m x 4.60m)

Kitchen

15' 0" x 9' 7" (4.58m x 2.92m)

Landing

Bedroom One

13' 3" x 12' 10" (4.04m x 3.92m)

Bedroom Two

13' 5" x 12' 11" (4.10m x 3.93m)

Bedroom Three

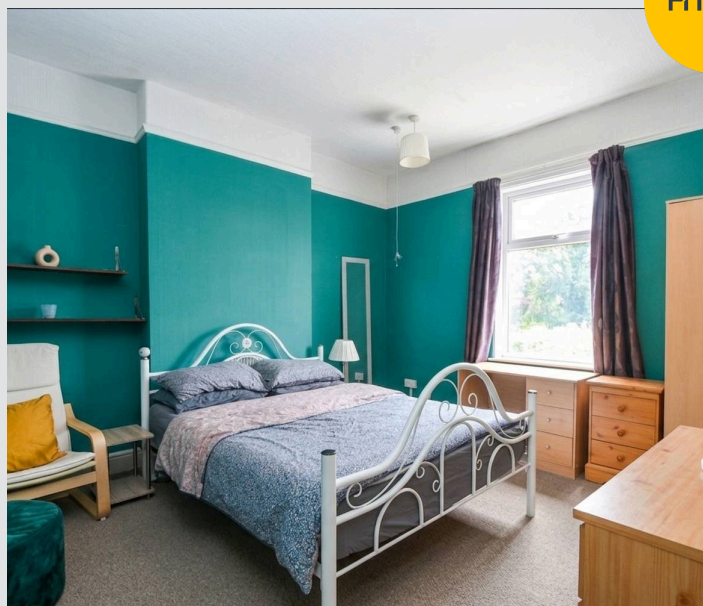
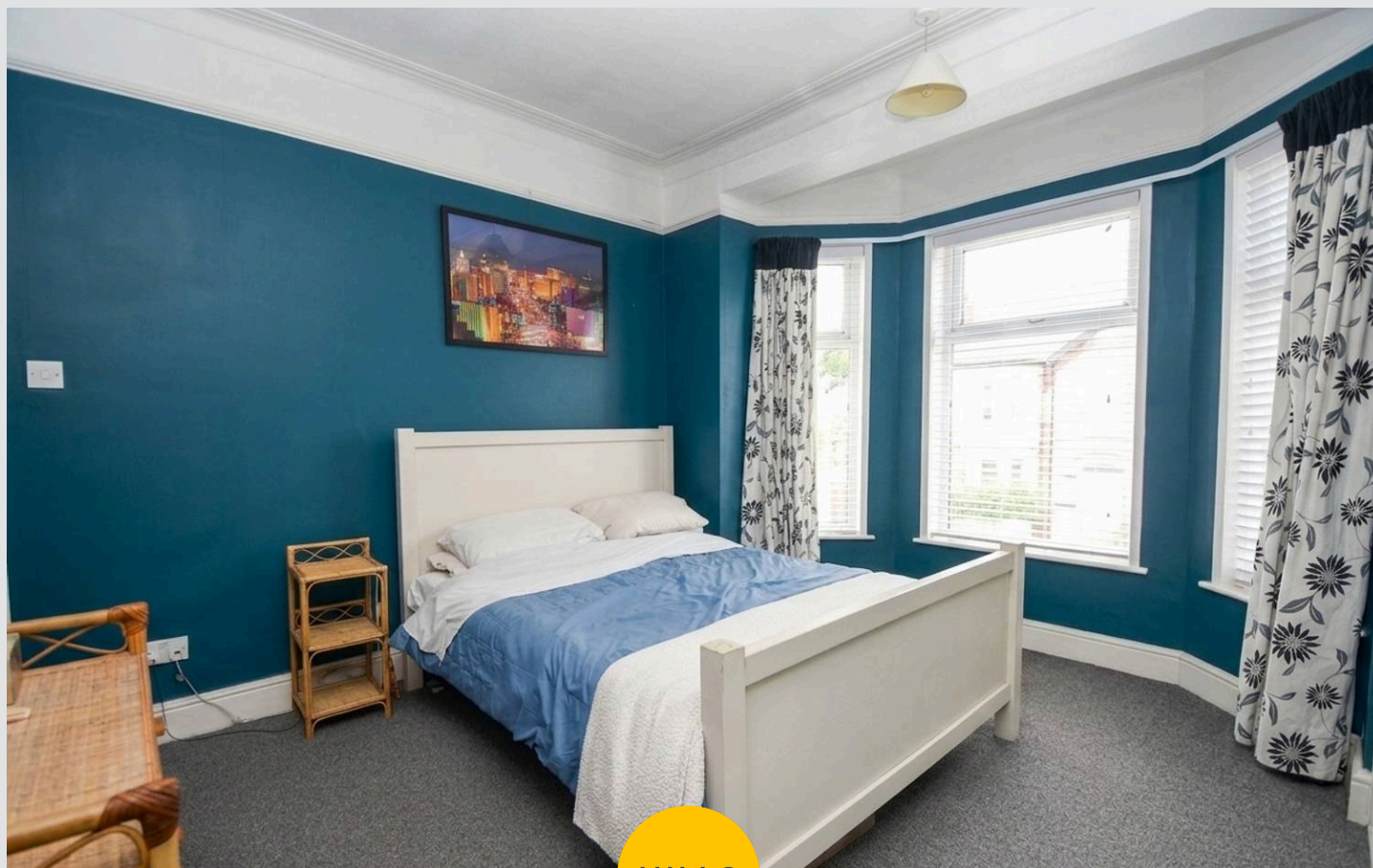
10' 10" x 7' 11" (3.29m x 2.42m)

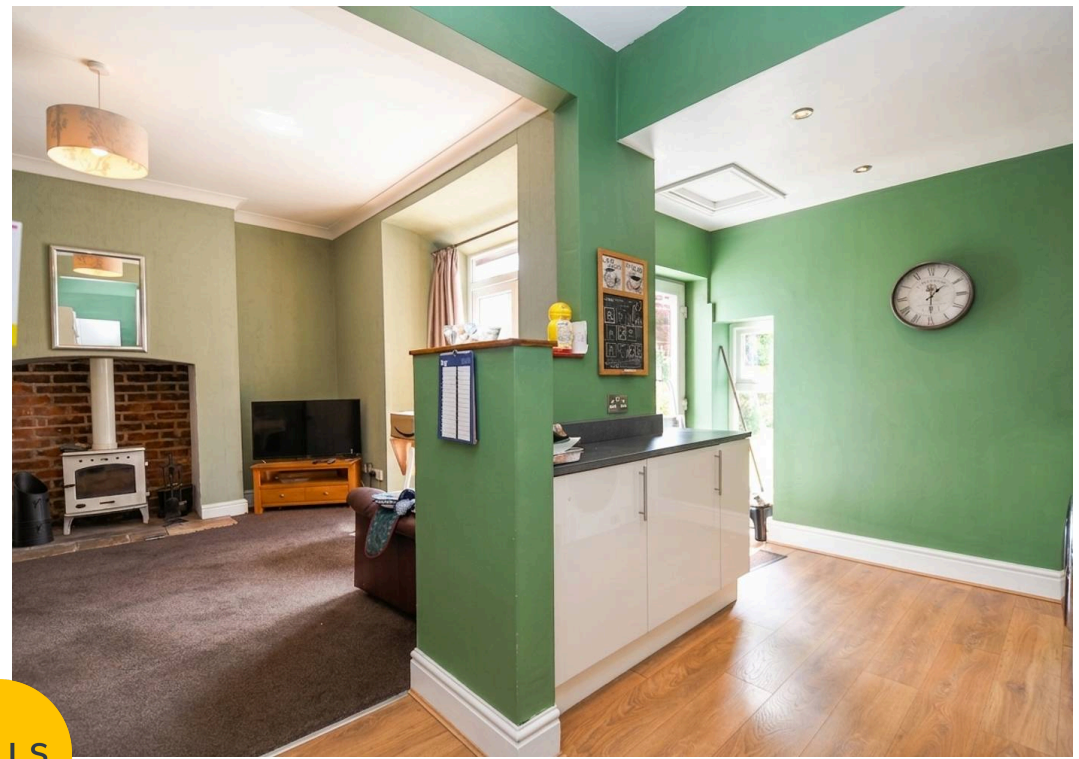
Bathroom

10' 6" x 8' 0" (3.19m x 2.45m)

Loft

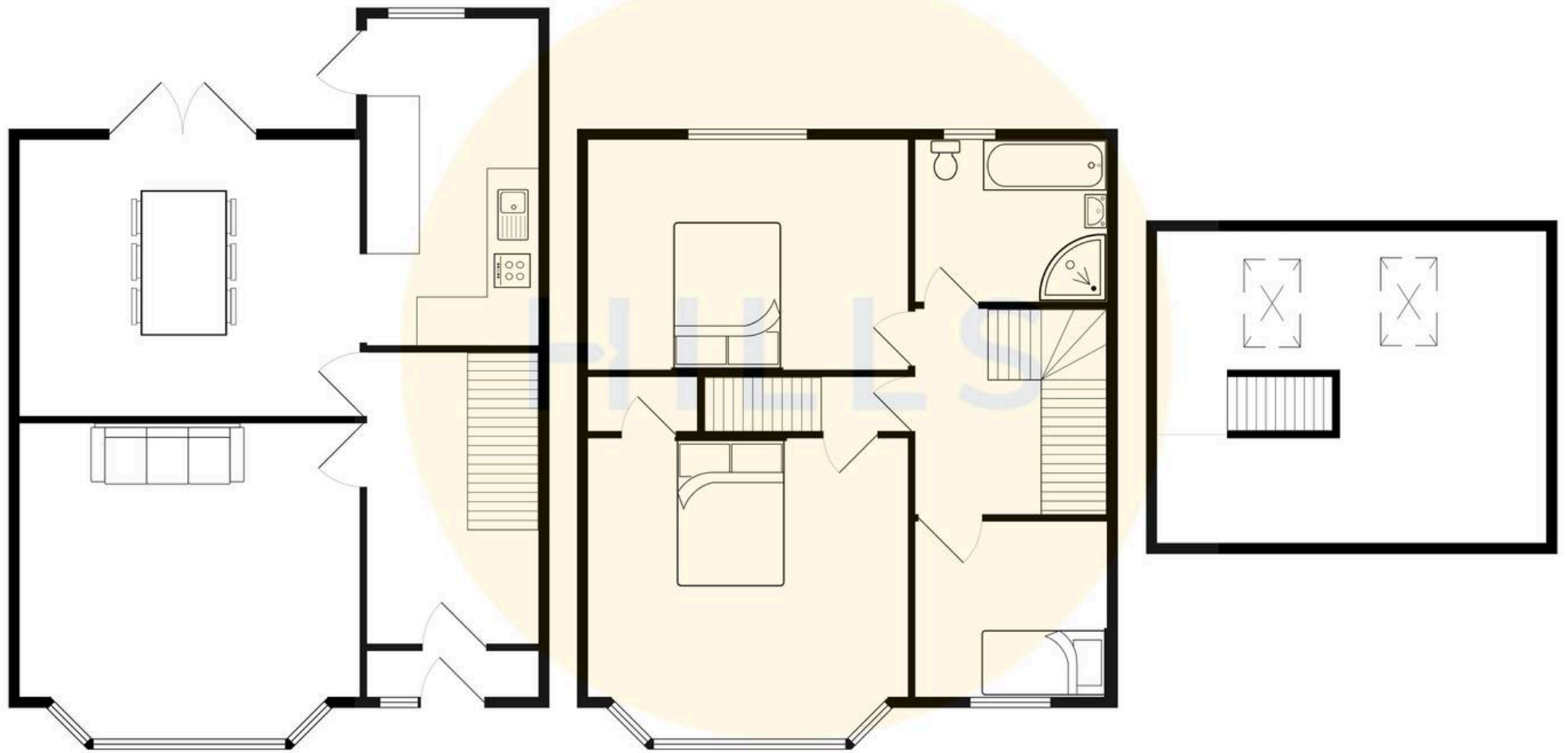
20' 7" x 13' 0" (6.28m x 3.95m)





HILLS







Hills | Salfords Estate Agent

Hills Residential, Sentinel House Albert Street – M30 0SS

0161 707 4900

sales@hills.agency

www.hills.agency/



By law, we are required to conduct anti-money laundering checks on all potential buyers and sellers. In line with HMRC guidelines, our trusted partner, Coadjute, will securely manage these checks on our behalf. A non-refundable fee of £45 + VAT per person will apply, and Coadjute will handle the payment. Once an offer is accepted, Coadjute will send a secure link for you to complete the biometric checks. These checks must be completed before we can send the memorandum of sale to all parties. PLEASE NOTE: The Agent has not tested any equipment, fixtures, fittings or services so cannot verify that they are in working order or fit for the purpose. References to the properties tenure are based on information supplied by the seller. You are advised to check the availability of this property before travelling any distance to view. Every effort has been made to ensure these particulars are correct and not misleading but their accuracy is not guaranteed nor do they form part of any contract.