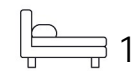




Living  
made  
better

Adriatic Apartments  
Royal Victoria Dock, E16 1BT



£1,750 PCM

# Adriatic Apartments, Royal Victoria Dock, E16 1BT

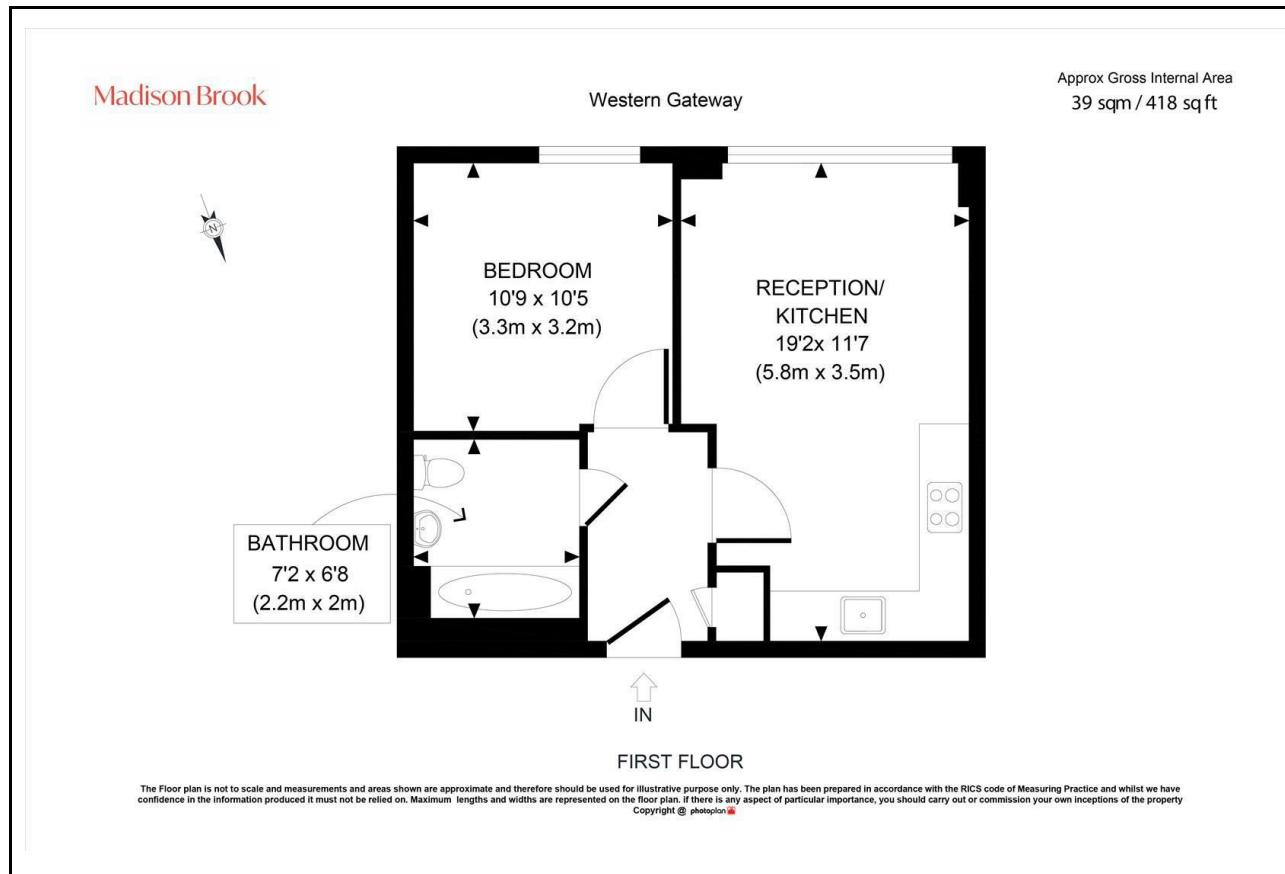
Madison Brook

## Property Summary

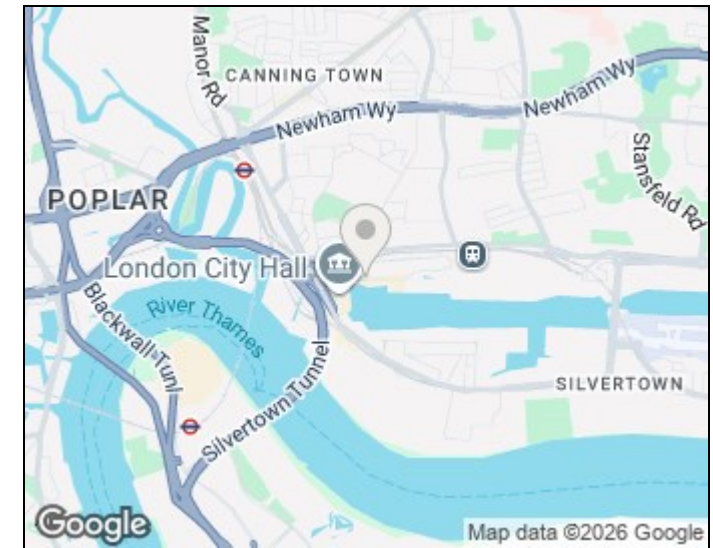
This smartly presented one-bedroom apartment is located on the first floor of the Adriatic Apartments, in the heart of Royal Victoria Dock. With its bright south-facing outlook and modern design, the property offers a welcoming open-plan living space and sleek kitchen with integrated appliances. The spacious double bedroom includes fitted storage, while the bathroom is stylishly finished with modern fixtures.

Residents enjoy the added benefit of a 24-hour concierge, access to a residents' gym, and optional secure underground parking (available via separate negotiation). Located moments from Custom House DLR and the Elizabeth Line, this apartment is perfectly positioned for professionals commuting to Canary Wharf or the City.

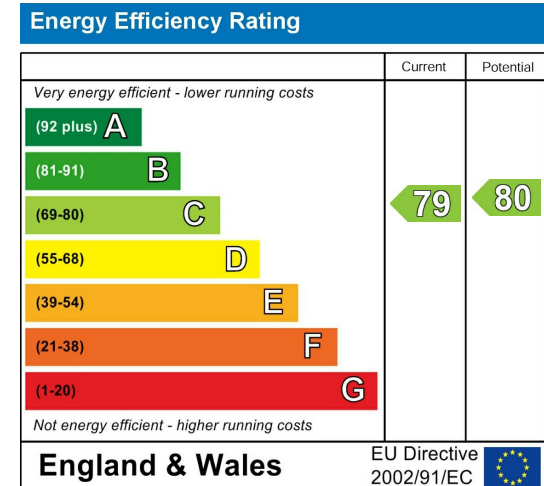
## Floorplan



## Area Map



## Energy Efficiency Graph



These particulars, whilst believed to be accurate are set out as a general outline only for guidance and do not constitute any part of an offer or contract. Intending purchasers should not rely on them as statements of representation of fact, but must satisfy themselves by inspection or otherwise as to their accuracy. No person in this firm's employment has the authority to make or give any representation or warranty in respect of the property.

Unit B 20 Western Gateway, Royal Victoria  
Dock, London, E16 1BS  
Tel: 020 3946 6000 Email:  
docklands@madisonbrook.com  
<https://madisonbrook.com/>