

## 7 Normans Close,

Guide Price £550,000

4 2 2

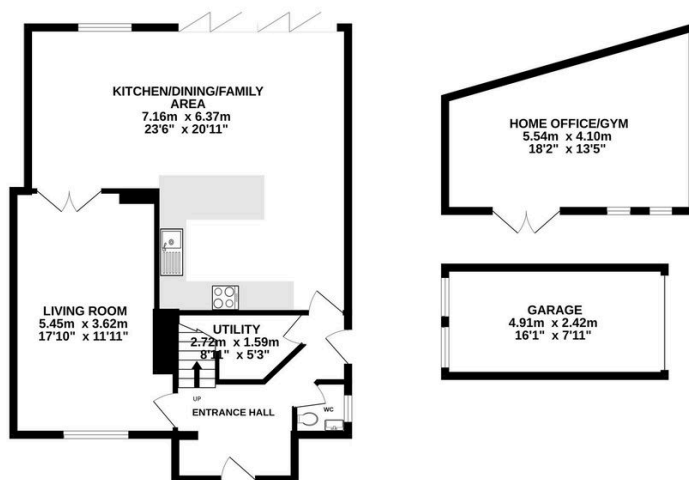


Situated in the highly sought after Norman's Close, this beautifully presented four double bedroom semi detached home has been thoughtfully extended and fully renovated to create a practical and well balanced family property.

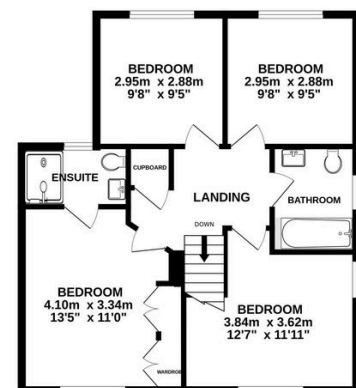
## Key Features

- Four double bedroom semi detached home
- Fully renovated throughout
- Principal bedroom with en suite
- Downstairs WC
- Fully insulated outbuilding with power, ideal for office or gym use
- Double storey rear extension
- Open plan kitchen and living space
- Separate utility room
- Large south facing rear garden
- Separate garage and two driveways

GROUND FLOOR  
98.8 sq.m. (1063 sq.ft.) approx.



1ST FLOOR  
57.7 sq.m. (621 sq.ft.) approx.



TOTAL FLOOR AREA: 156.5 sq.m. (1684 sq.ft.) approx.

Whilst every attempt has been made to ensure the accuracy of the floorplan contained here, measurements of doors, windows, rooms and any other items are approximate and no responsibility is taken for any error, omission or mis-statement. This plan is for illustrative purposes only and should be used as such by any prospective purchaser. The services, systems and appliances shown have not been tested and no guarantee as to their operability or efficiency can be given.  
Made with Metropix ©2025