

Brynland Avenue

BISHOPSTON

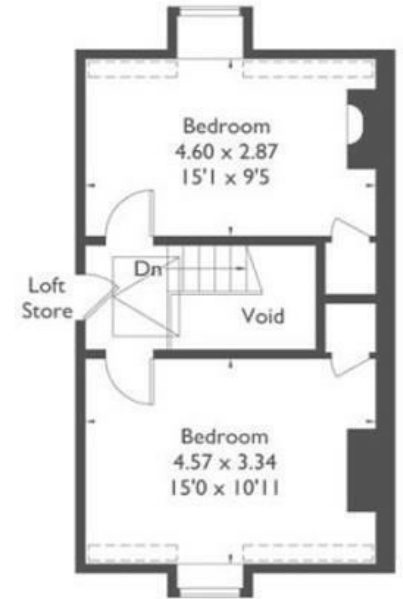
APPROXIMATE FLOOR AREA
155.2 SQM / 1670 SQFT



Ground Floor




First Floor



Second Floor



 = Reduced headroom below 1.5m / 5'0

Boardwalk

Brynland Avenue , BRISTOL



£850,000



BS7 9DT



4 Bedrooms



2 Bathrooms

"This has been a great family home for us, we'll particularly miss the beautiful front garden with lavender and honeysuckle."

