



**28 Somersby Crescent, Maidenhead SL6 3YY**



**welcome to**

## **28 Somersby Crescent, Maidenhead**

This impressive four-bedroom, three bathroom family home occupies a generous plot and is proudly positioned as the largest house on the road. Thoughtfully designed for comfortable modern living, it offers bright, spacious accommodation throughout and a wonderful sense of privacy. **NO CHAIN.**



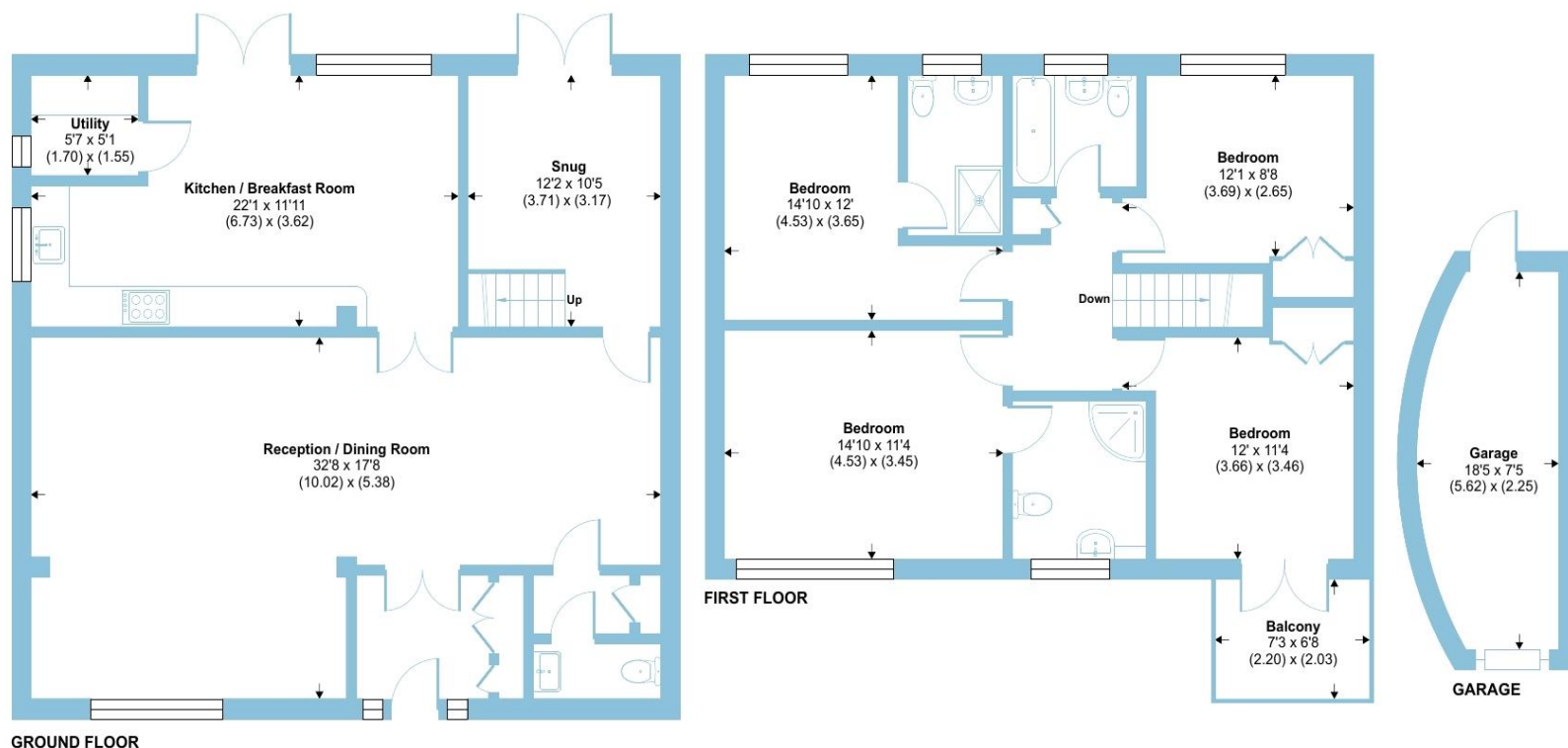
## Somersby Crescent, Maidenhead, SL6

Approximate Area = 1767 sq ft / 164.1 sq m

Garage = 121 sq ft / 11.2 sq m

Total = 1888 sq ft / 175.3 sq m

For identification only - Not to scale



The ground floor features a welcoming entrance hall leading to a spacious 32' x 17' living and dining area, a well-appointed kitchen/breakfast room - perfect for family life and entertaining alike, utility room, a further reception room/snug and a downstairs w.c. Upstairs, there are four bedrooms with the principal bedroom having an en-suite, large second double bedroom with en-suite, third double bedroom and a well-proportioned fourth bedroom with a balcony and completing the first floor is the family bathroom.

Outside, the property boasts a good size private rear garden, ideal for relaxation or outdoor dining, with a patio area, plenty of space for children to play and an outbuilding. A driveway providing ample off-road parking and access into the garage - mainly used for storage.

Situated in a desirable residential area, this property offers the perfect balance of peace, privacy and convenience, making it an ideal choice for families seeking a spacious and welcoming home. this fabulous family home is also being sold with no onward chain.



Floor plan produced in accordance with RICS Property Measurement 2nd Edition, incorporating International Property Measurement Standards (IPMS2 Residential). © nchecom 2025. Produced for Barnard Marcus. REF: 1375396





## welcome to 28 Somersby Crescent

- SPACIOUS EXTENDED FAMILY HOME
- FOUR BEDROOMS
- THREE BATHROOMS
- LARGE DRIVEWAY
- GOOD SIZE REAR GARDEN
- SOUGHT AFTER CUL-DE-SAC
- EASY ACCESS TO TOWN CENTRE & SCHOOLS
- NO ONWARD CHAIN

Tenure: Freehold EPC Rating: Awaited  
Council Tax Band: E

# £900,000



Please note the marker reflects the  
postcode not the actual property

check out more properties at [rogerplatt.co.uk](http://rogerplatt.co.uk)



Property Ref:  
MHD123132 - 0002

1. MONEY LAUNDERING REGULATIONS Intending purchasers will be asked to produce identification documentation at a later stage and we would ask for your co-operation in order that there is no delay in agreeing the sale. 2. These particulars do not constitute part or all of an offer or contract. 3. The measurements indicated are supplied for guidance only and as such must be considered incorrect. Potential buyers are advised to recheck measurements before committing to any expense. 4. We have not tested any apparatus, equipment, fixtures or services and it is in the buyers interest to check the working condition of any appliances. 5. Where an EPC, or a Home Report (Scotland only) is held for this property, it is available for inspection at the branch by appointment. If you require a printed version of a Home Report, you will need to pay a reasonable production charge reflecting printing and other costs. 6. We are not able to offer an opinion either written or verbal on the content of these reports and this must be obtained from your legal representative. 7. Whilst we take care in preparing these reports, a buyer should ensure that his/her legal representative confirms as soon as possible all matters relating to title including the extent and boundaries of the property and other important matters before exchange of contracts.

Roger Platt is a trading name of Sequence (UK) Limited which is registered in England and Wales under company number 4268443, Registered Office is Cumbria House, 16-20 Hockliffe Street, Leighton Buzzard, Bedfordshire, LU7 1GN. VAT Registration Number is 500 2481 05.

  
roger platt



**01628 773333**



[Maidenhead@rogerplatt.co.uk](mailto:Maidenhead@rogerplatt.co.uk)



25-29 Queen Street, MAIDENHEAD, Berkshire,  
SL6 1NB



**[rogerplatt.co.uk](http://rogerplatt.co.uk)**