

Bach House London

Introducing a fabulous 2 bedroom apartment in Bach House, part of the popular Nine Elms Point development. This delightful property offers a spacious living experience, boasting an impressive 807 square feet of well-designed space.

The property offers a welcoming reception room, perfect for relaxing or entertaining guests. The apartment features two generously sized bedrooms, providing ample space for rest and privacy. With two bathrooms, convenience is at your fingertips, making it ideal for families or those who enjoy having extra facilities.

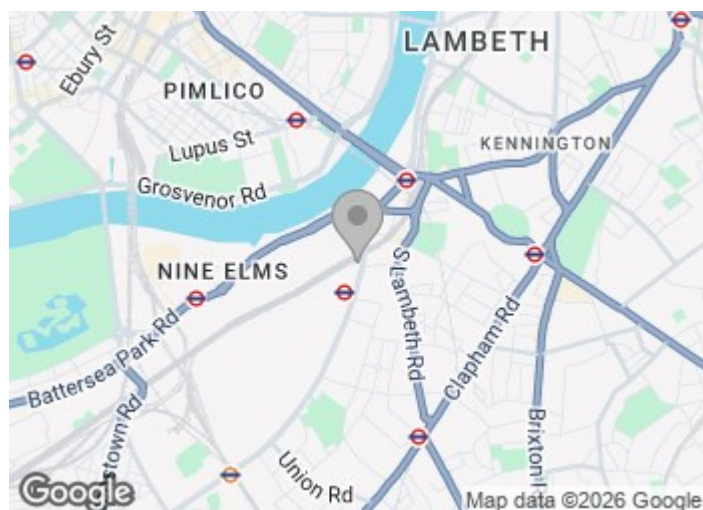
The modern design of this apartment ensures a comfortable and stylish living environment, with contemporary finishes that appeal to today's discerning buyer. The location on Wandsworth Road offers excellent transport links

Asking Price £685,000

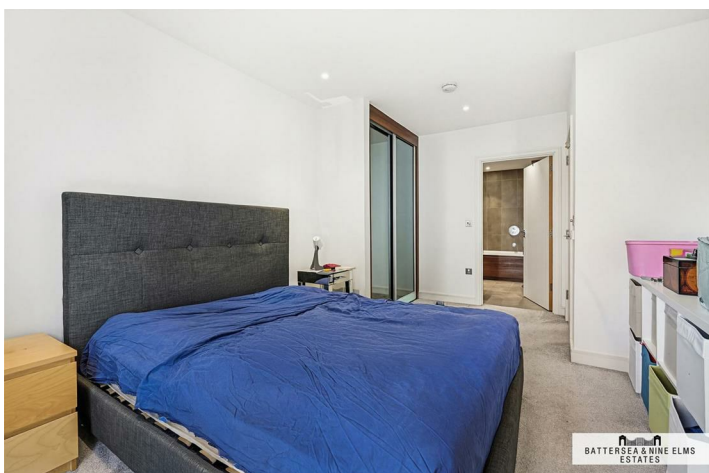
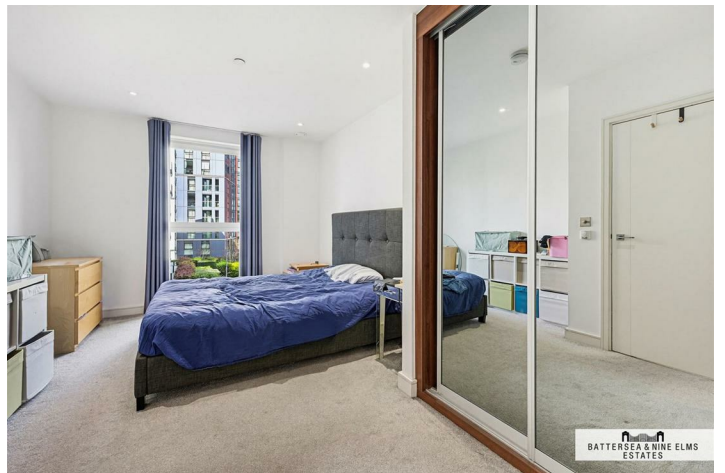
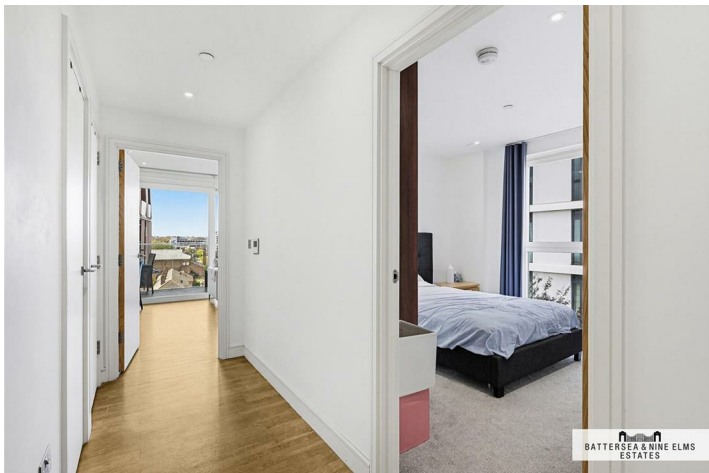
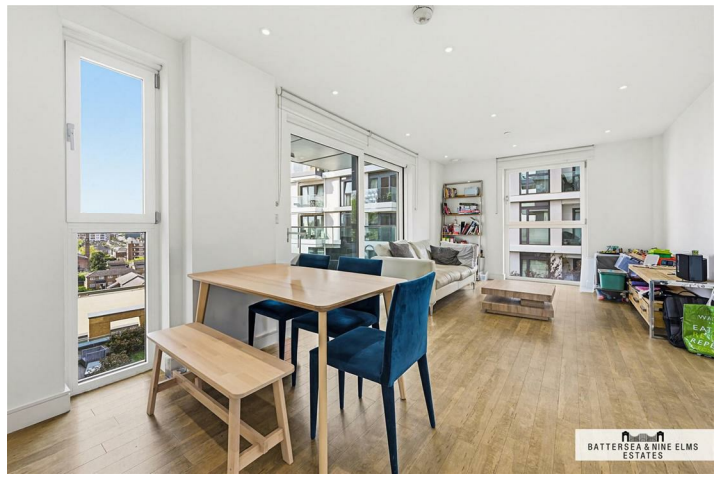
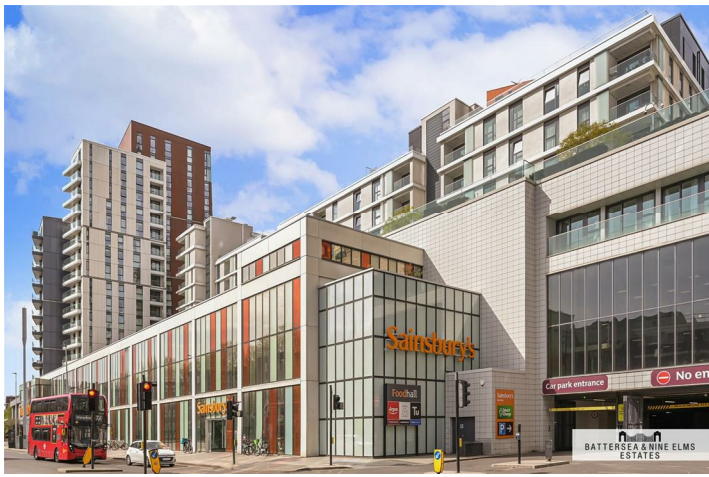
Bach House London



- Two bedrooms
- Two bathrooms (one en-suite)
- Residents only gymnasium
- Residents lounge
- Cinema room
- 24 hour concierge



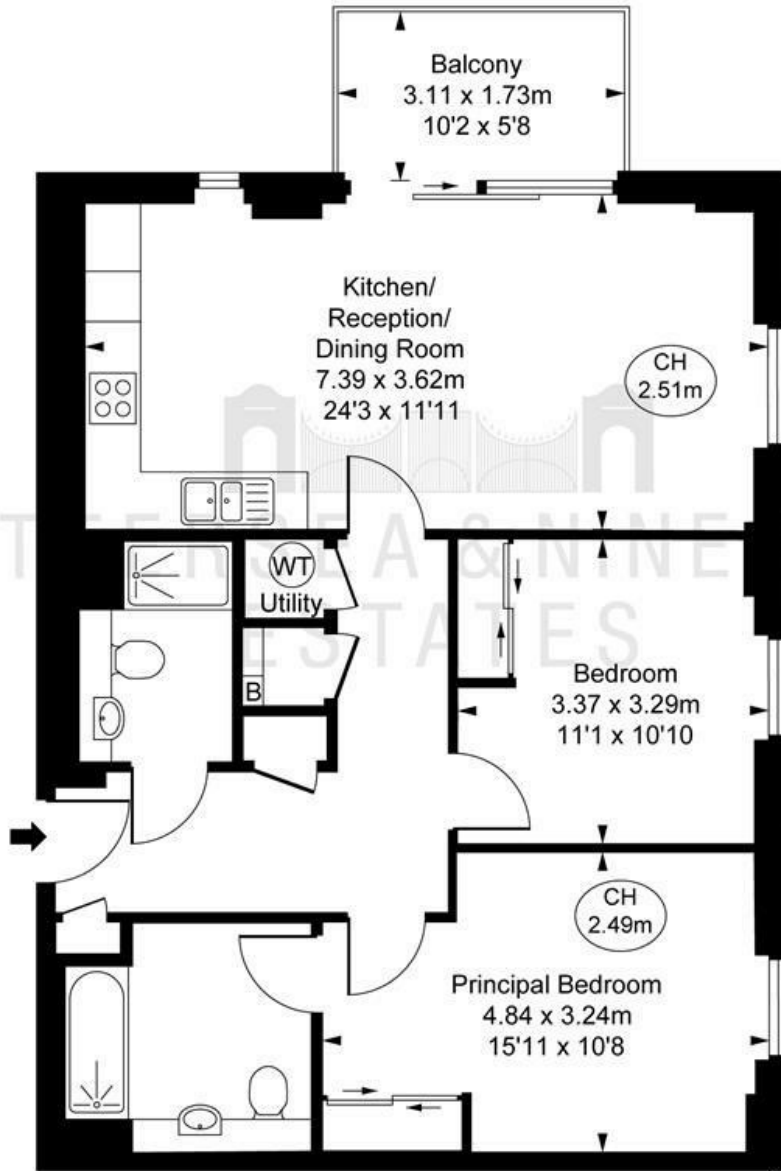
[Directions](#)



Bach House,
Wandsworth Road, SW8

Approximate Gross Internal Area
76.46 sq m / 823 sq ft

(CH = Ceiling Heights)



Sixth Floor

This plan is not to scale. It is for guidance and not for valuation purposes.
All measurements and areas are approximate only, and have been prepared in accordance with the current edition of the RICS Code of Measuring Practice.
© Fulham Performance

These particulars, whilst believed to be accurate are set out as a general outline only for guidance and do not constitute any part of an offer or contract. Intending purchasers should not rely on them as statements of representation of fact, but must satisfy themselves by inspection or otherwise as to their accuracy. No person in this firm's employment has the authority to make or give any representation or warranty in respect of the property.

