



ENFYS ESTATES

Traditional values **behind modern thinking**

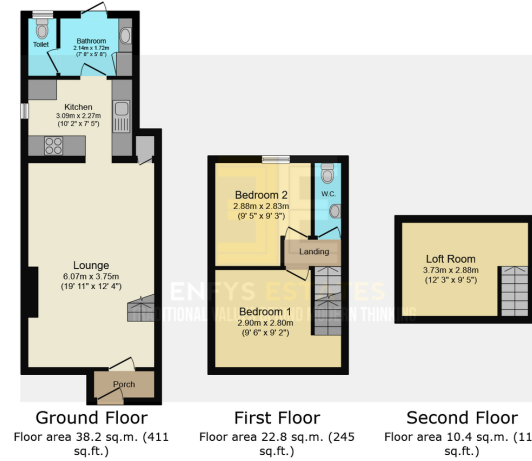
Upper Maenan, Penmaenmawr, LL34 6PD

£130,000

🛏️ 2 🚿 1 🚗 2





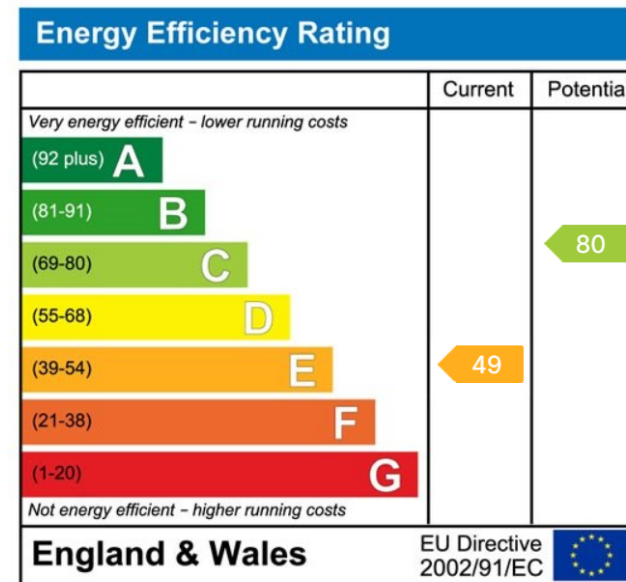


Total floor area: 71.4 sq.m. (768 sq.ft.)

This floor plan is for illustrative purposes only. It is not drawn to scale. Any measurements, floor areas (including any total floor area), openings and orientations are approximate. No details are guaranteed, they cannot be relied upon for any purpose and do not form any part of any agreement. No liability is taken for any error, omission or misstatement. A party must rely upon its own inspection(s). Powered by www.Propertybox.io

Enfys Estates are delighted to bring to the market a charming extended two-bedroom mid terrace cottage with loft room. Although this property is in need of some cosmetic work it is offered For Sale with No Onwards chain, lovely sea views and large garden. Located on the outskirts in the sought-after coastal village of Penmaenmawr, which offers a peaceful coastal lifestyle with stunning views of the sea and nearby mountains.

This charming North Wales town combines natural beauty with a strong sense of community, making it ideal for those who enjoy outdoor activities like hiking, beach walks, and exploring Snowdonia National Park. Offering good transport links to larger towns like Llandudno and Bangor via bus or rail. Overall, it's a scenic and welcoming place to call home with local



www.enfysestates.co.uk

14 Augusta Street, Llandudno, LL30 2AE

t. 01492 555 150 | e. hello@enfysestates.co.uk

rightmove

PRS Property Redress Scheme

Trustpilot



BOOK YOUR FREE VALUATION