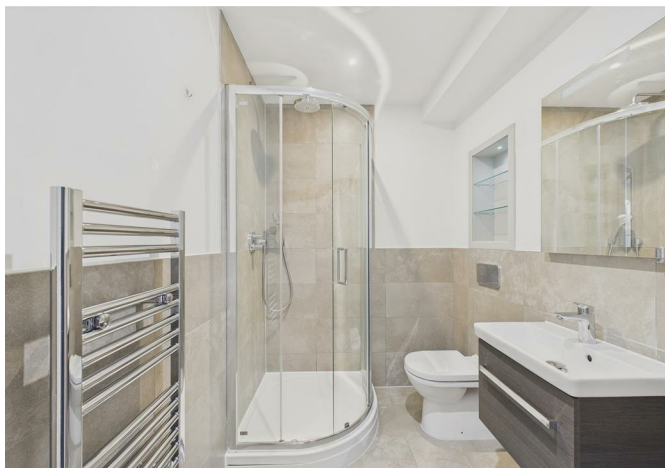




413231 Olympic Way, Fridman House, Wembley, HA9 0PL
£1,700





413231 Olympic Way, Fridman House, Wembley, HA9 0PL

£1,700

Larger than average Studio Apartment situated in the heart of Wembley Park providing over 450 sq ft of internal space with views of Wembley Stadium.

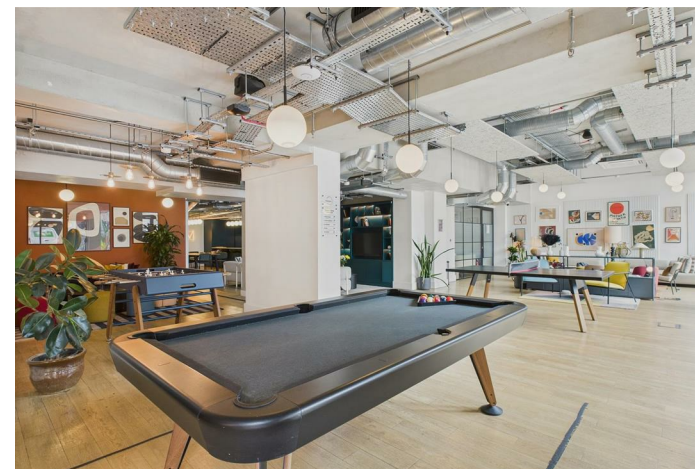
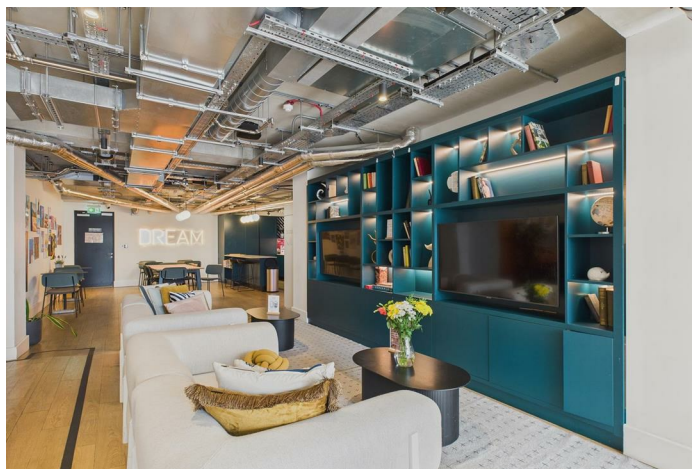
With Multiple Lounges, Residents Gym, Co-working spaces, Cinema Room, Concierge. and residents lounge. Fridman & Merevale House have been extensively refurbished over the years and now provide a spectacular living experience for those wanting to live in a quiet and safe environment.

To discuss this development in further detail and to explore a range of studio, 1, 2 and 3 bedroom apartment please contact our leasing team direct today on 020 8488 6296.

Description



Situation



Furnished/unfurnished

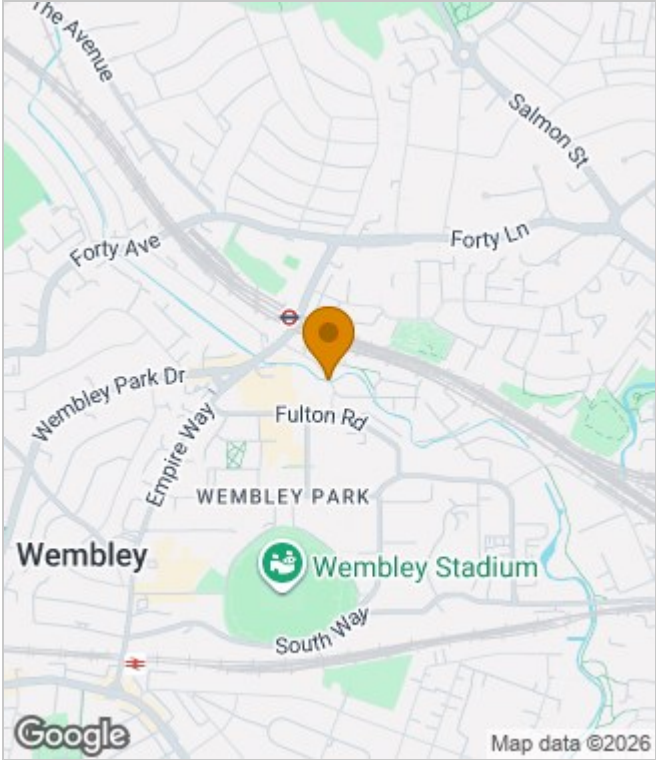
Council Tax Band: C

Available:

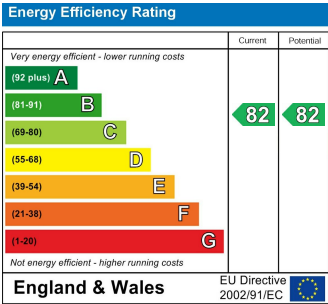
Floor Plans



Area Map



Energy Performance Graph



These particulars, whilst believed to be accurate are set out as a general outline only for guidance and do not constitute any part of an offer or contract. Intending purchasers should not rely on them as statements of representation of fact, but must satisfy themselves by inspection or otherwise as to their accuracy. No person in this firms employment has the authority to make or give any representation or warranty in respect of the property.