



Acacia Road, SW16

£375,000

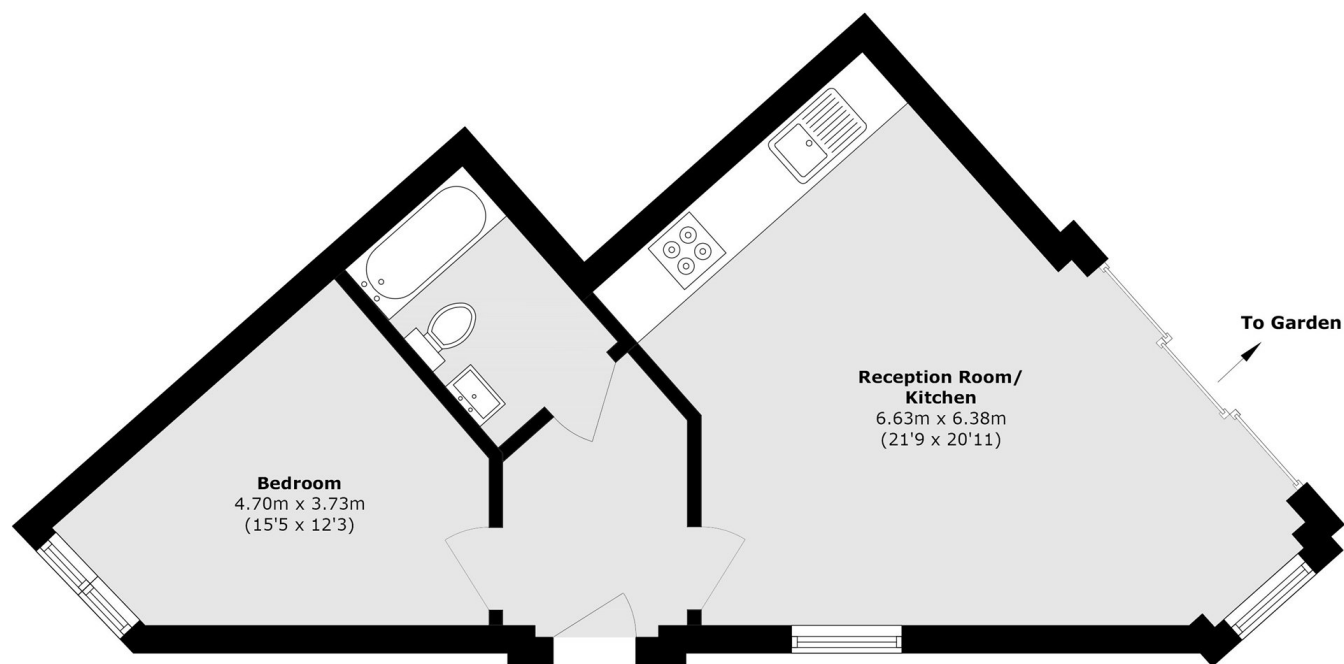
A ground-floor one double bedroom apartment with a large wrap-around private garden. This private maisonette benefits from a share of the freehold, a 999-year lease and a high specification throughout, including a German-designed kitchen, German appliances & underfloor heating in the bathroom. This property is fully fitted with a Mechanical Ventilation with Heat Recovery (MVHR) system, which provides continuous fresh, filtered air while recovering up to 90% + of the energy used from air.

Lilium House is a boutique development tucked nicely away from the hustle and bustle of the main road but within convenient walking distance to shops, bars, restaurants and cafes as well as with extremely easy access to Norbury Station. The green open spaces of Norbury Park are just across the road, with Streatham Common also just a short walk away.

Features

- One Double Bedroom
- Maisonette Apartment
- Large Wrap-Around Garden
- 999 Year Lease
- Share Of The Freehold
- High Specification
- Chain Free
- New Homes 10 Year Warranty

Acacia Road, Streatham, SW16



Ground Floor

Total area (approx.): 51.0 sq. m (548.9 sq. ft)

Dexters

New Homes South London
12 The Broadway
London
SW19 1RF
Sales
020 8674 4555

Energy Rating: . We aim to make our particulars both accurate and reliable. However they are not guaranteed; nor do they form part of an offer or contract. If you require clarification on any points then please contact us, especially if you're traveling some distance to view. Please note that appliances and heating systems have not been tested and therefore no warranties can be given as to their good working order.

 **RICS** | Regulated
Estate Agent
and Letting Agent

dexters.co.uk