




For Sale 26 Romani Close, Warwick

Offers Over £160,000

-  **1**
-  **1**
-  **1**

***** WELL PRESENTED FIRST FLOOR APARTMENT, ONE LARGE DOUBLE BEDROOM & READY TO MOVE STRAIGHT IN TO *****

... WELL PRESENTED FIRST FLOOR APARTMENT, ONE LARGE DOUBLE BEDROOM & READY TO MOVE STRAIGHT IN TO ...

The property offers excellent local amenities including local shops and schools, while also offering easy access into Warwick town centre. For commuters there are frequent trains from Warwick Train Station and access to the Warwick Bypass and M40 motorway network.

The property is very well presented and ready to move straight in to and would be ideal for a first time buyer, somebody looking to downsize or an investor.

In brief the property comprises of; open plan lounge / kitchen / dining area, large double bedroom with built in wardrobes around the bed and a white modern bathroom suite.

Further benefits include one allocated parking space and double glazing throughout.

CALL NOW TO VIEW!

—

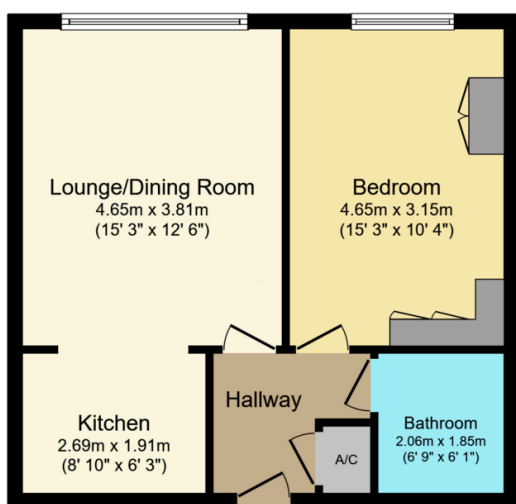


Nathaniel Cleaver
07793 363210
nathaniel@thepropertyexperts.co.uk



The Property Experts UK

01926436105



Floor Plan
Floor area 48.0 sq.m. (517 sq.ft.)

Total floor area: 48.0 sq.m. (517 sq.ft.)

This floor plan is for illustrative purposes only. It is not drawn to scale. Any measurements, floor areas (including any total floor area), openings and orientations are approximate. No details are guaranteed; they cannot be relied upon for any purpose and do not form any part of any agreement. No liability is taken for any error, omission or misstatement. A party must rely upon its own inspection(s). Powered by www.Propertybox.io

- First Floor Apartment
- One Large Double Bedroom
- Lounge / Dining Area
- Kitchen
- Allocated Parking
- Communal Grounds
- Close To Local Amenities
- Ideal First Time Or Investment Buy
- No Onward Chain
- EPC Rating - C

