



**Taylors**



## CRADLEY HEATH, Highland Road

Offers In Region Of £275,000

3 1 2

- Convenient residential location
- Large rear garden
- Sitting room with Log burner
- Utility Area
- Garage
- Full width rear extension
- Lounge with open fire
- Spacious Dining Kitchen
- Attractive Bathroom
- Wide Belling 7 ring cooker



An outstanding TRADITIONAL SEMI DETACHED HOME having a superb large full width rear extension. Requiring INTERNAL INSPECTION and with a LARGE REAR GARDEN, gas central heating and PVC double glazing. Porch, Hall with stained glass entrance door, Lounge with OPEN FIRE, Sitting Room with LOG BURNER and opening to Super Dining/Living Kitchen with Utility Area, Three Bedrooms, modern period style Bathroom. Garage.

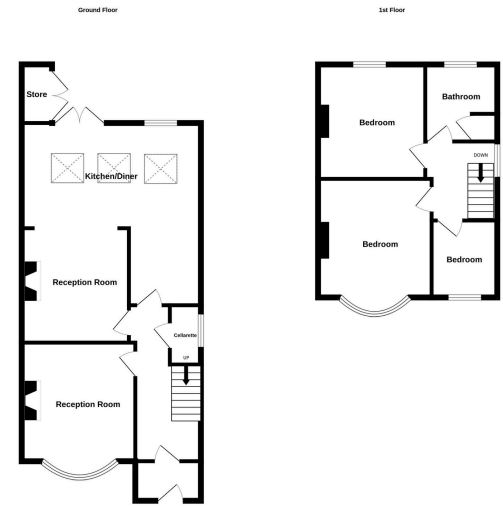
All main services connected. Tenure Freehold. Council Tax Band C. EPC D. Broadband/ Mobile coverage: <https://checker.ofcom.org.uk/en-gb/broadband-coverage>. Construction traditional with tiled roof. Long term flood risk very low.

**Double glazed Porch** With tiled floor and power, **Reception Hall** Having lovely leaded and stained glass entrance door. Store Cupboard off, **Front Lounge** - 4.17m x 3.51m (13'8" into bay x 11'6") With attractive period style fireplace with tiled inset and OPEN FIRE, **Rear Sitting Room** - 3.45m x 3.35m (11'4" x 11'0") Having fireplace with LOG BURNER and opening to the super Living Kitchen, **Superb Living/Dining Kitchen** - 5.87m x 4.65m (19'3" max x 15'3") With tiled floor, 3 velux windows [ one electrically operated ], multifunctional ceiling lighting and ceiling speaker system. Range of floor and wall cupboards with solid wood doors. Wide Belling 7 ring cooker with cooker hood. Utility area with space for American style fridge freezer, washer and dryer, **Landing**, **Front Bedroom One** - 4.29m x 3.48m (14'1" into bay x 11'5") With ornamental fireplace, **Bedroom Two** - 3.51m x 3.35m (11'6" x 11'0") With ornamental fireplace, **Bedroom Three** - 2.16m x 1.83m (7'1" x 6'0"), **Period style Bathroom** - 2.39m x 1.93m (7'10" x 6'4") Having shaped bath on legs with telephone style taps/shower handle, High level WC and handbasin. Built in Linen cupboard, **Garage** With shared drive approach, **Large Rear Garden** Having substantial Garden Store with double doors, good size lawn and rear CHILDRENS PLAY AREA

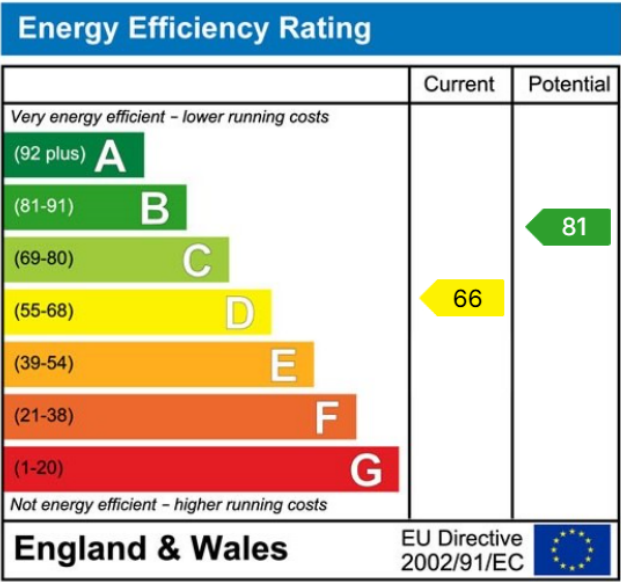








Measurements are approximate. We do not warrant, guarantee or accept any liability for the accuracy of the measurements.



**MISREPRESENTATION ACT 1967:** These particulars do not constitute any part of an offer or a contract. Whilst every care is taken to ensure accuracy, no responsibility for errors or misdescription is accepted. Any intending purchaser must satisfy themselves by inspection or otherwise as to the correctness of each of the statements in these particulars. The vendor does not make nor give, and neither Taylors nor any person in their employment has any authority to make or give any representation or warranty whatsoever about this property. As the seller's estate agents, we are not surveyors or conveyancing experts, and we cannot comment on the property's condition or issues relating to the title or other legal issues that may affect this property unless we have been made aware of such matters. Interested parties should employ professionals to make such enquiries before making transactional decisions. **EPC:** can be supplied free of charge. **CONSUMER PROTECTION REGULATIONS (2008):** These particulars have been prepared with care and approved by the vendors (where possible) but are intended as a guide only, with measurements being approximate and usually the maximum size, which may include alcoves, recesses or otherwise as described, and you must NOT rely on them for any other purpose. The appearance of an item in any photograph does not mean that it forms part of the property or sale price. **FIXTURES AND FITTINGS:** Only those items specifically mentioned in these sales particulars are included in the sale price. Taylors have NOT tested any apparatus, equipment, fixture or fitting and cannot verify they are in working order or fit for their purpose. **PLANNING PERMISSION / BUILDING REGULATIONS:** Any reference to the property being extended, altered or converted in any way does not infer that planning permission or building regulations have been granted or applied for, nor do Taylors accept any responsibility for such not having been obtained. **FLOOR PLAN:** This plan is for illustrative purposes only. The services, systems and appliances shown have not been tested and no guarantee as to their operability or efficiency can be given.