



**BUTCHER**  
RESIDENTIAL

**TO  
LET**

**Church Street, Cawthorne**

IMPECCABLY PRESENTED 4 BED FAMILY HOME  
PROVIDING ACCOMMODATION OF EXPANSIVE  
PROPORTIONS

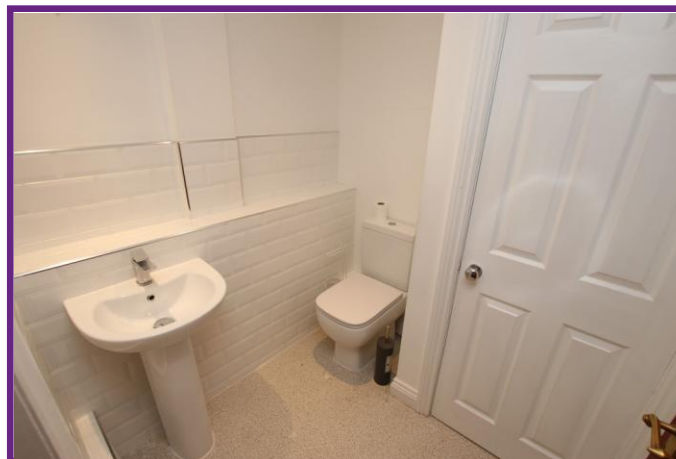
**Rent: £1,600 pcm**



**follow us** **twitter**

[www.butcherez.co.uk](http://www.butcherez.co.uk)

HOUSE STYLE	RECEPTION ROOMS	BEDROOMS	EPC RATING	PARKING FOR 4 VEHICLES
End Terraced	2	4	E	



**PENISTONE'S PROPERTY PEOPLE**

Penistone Office: 2 Crown House, Shrewsbury Road, Penistone, S36 6DY - Tel: 01226 767766